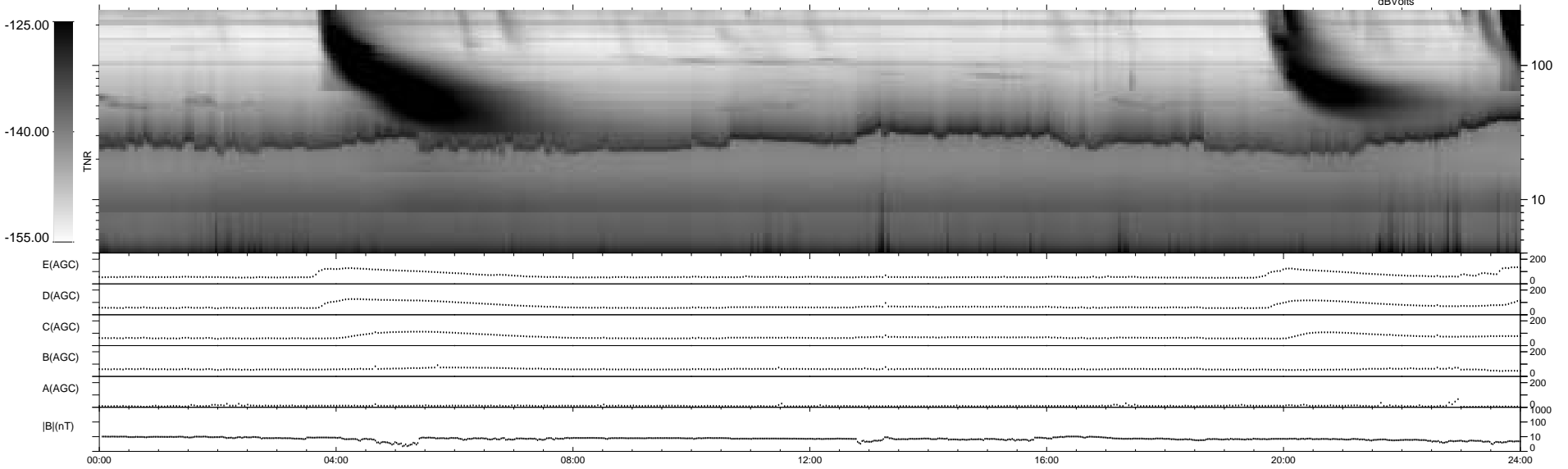
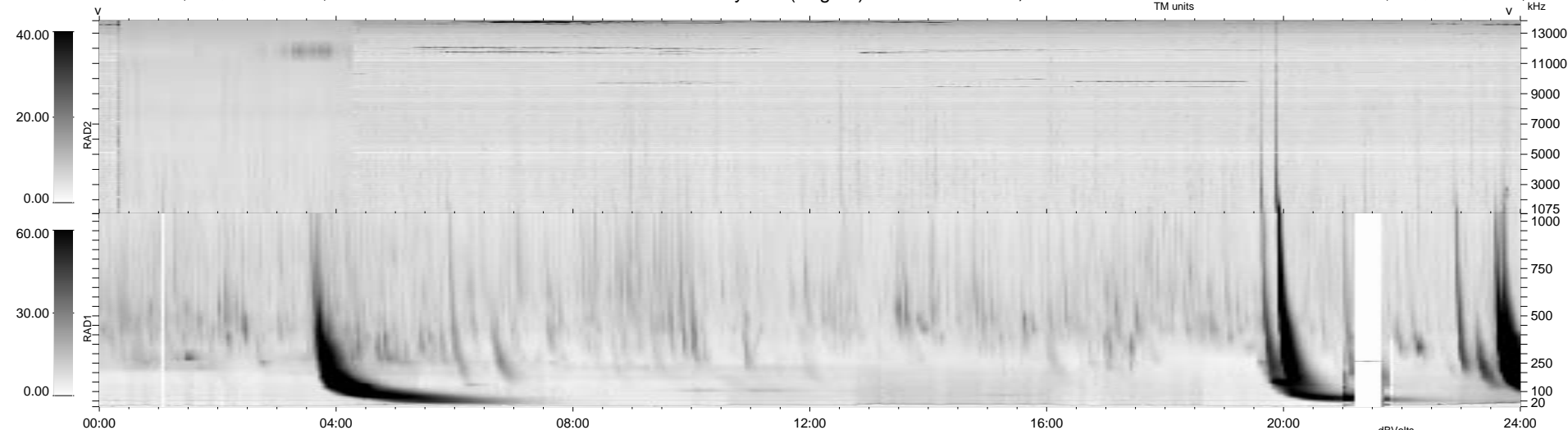


13 bad + 926 good MF/939MF projected (98%) - 0 missing MFs  
 Avg interval = 180 secs  
 Re = 228.24 (227.34, -20.19, -0.54 GSE)

1.7d VMS-SunOS LZ version = v01  
 DAILY Tue Sep 16, 2008  
 Re = 227.74 (226.88, -19.74, 0.56 GSE)

WIND/WAVES Summary Plot (Page 1) for 03-APR-1998, DOY = 93



E(AGC) 0 200  
 D(AGC) 0 200  
 C(AGC) 0 200  
 B(AGC) 0 200  
 A(AGC) 0 200  
 |B|(nT) 0 1000  
 0 100  
 0 10

```

RAD2
Antenna Ey
Mode LIN(1) LIN(9) LIN(1)
SUM/SEP SUM SEP SUM
Toggle OFF SEP SUM
RAD1
Antenna Ex
Mode LIS(2,3) FIX(50) LIS(2,3)
SUM/SEP SUM SEP SUM
Toggle OFF SEP SUM
TNR
Antenna ExEy
Mode A-32
Sweep ABCDE
  
```