

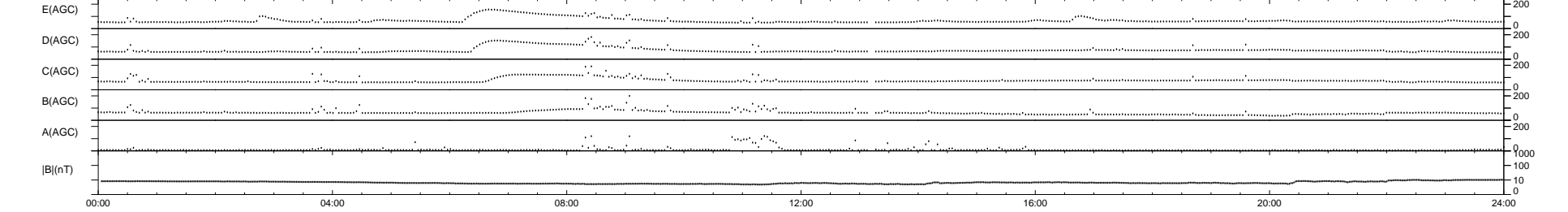
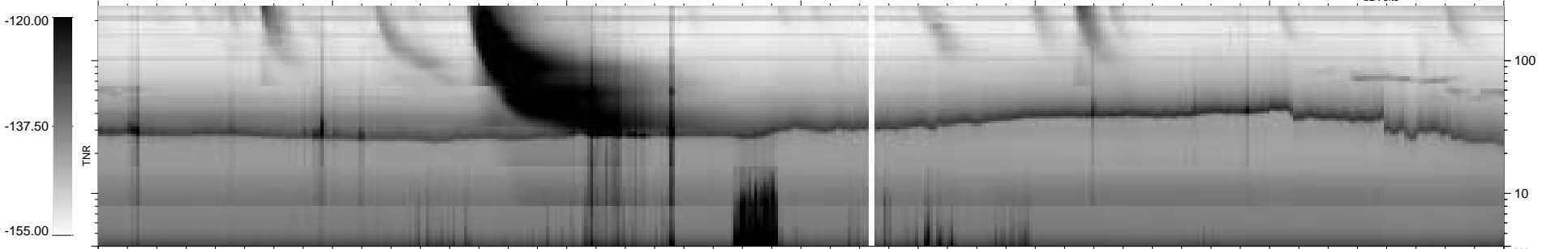
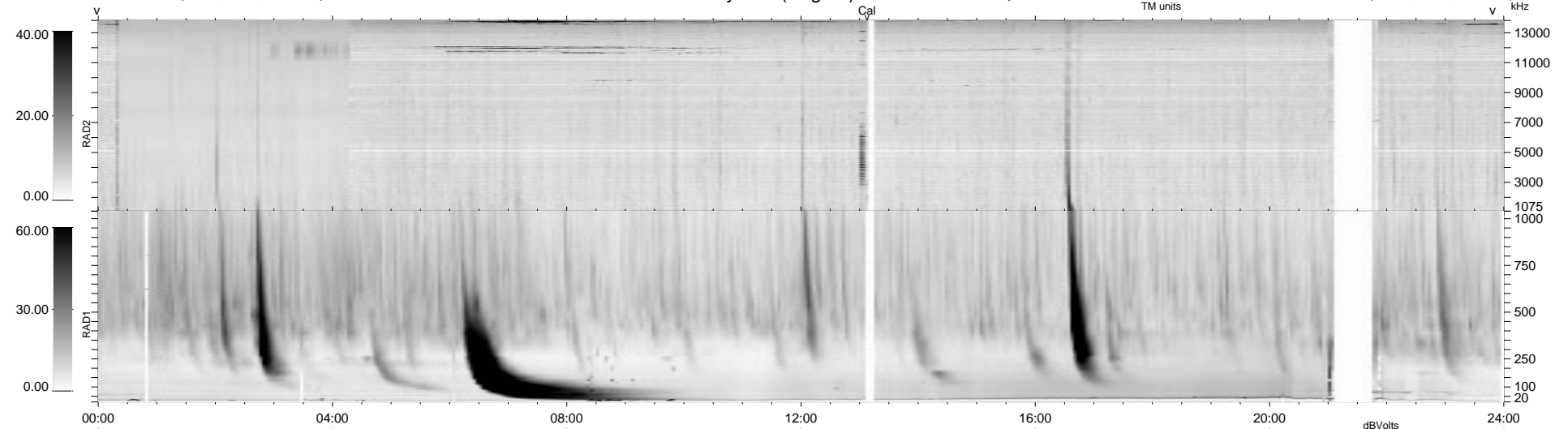
15 bad + 924 good MF/939MF projected (98%) - 0 missing MFs
 Avg interval = 180 secs
 Re = 228.74 (227.80, -20.63, -1.65 GSE)

1.7d VMS-SunOS

LZ version = v02

WIND/WAVES Summary Plot (Page 1) for 02-APR-1998, DOY = 92

DAILY Tue Sep 16, 2008
 Re = 228.24 (227.35, -20.19, -0.55 GSE)



```

RAD2
Antenna Ey .....
Mode LIN(1) LIN(06) LIN(1) ..... FIX(0) LIN(1) .....
SUM/SEP SUM SEP SUM ..... SEP SUM .....
Toggle OFF .....

RAD1
Antenna Ex .....
Mode LIS(2,3) ..... FIX(255) LIS(2,3) .....
SUM/SEP SUM SEP SUM ..... SEP SUM .....
Toggle OFF .....

TNR
Antenna ExEy .....
Mode A-32 .....
Sweep ABCDE .....
  
```