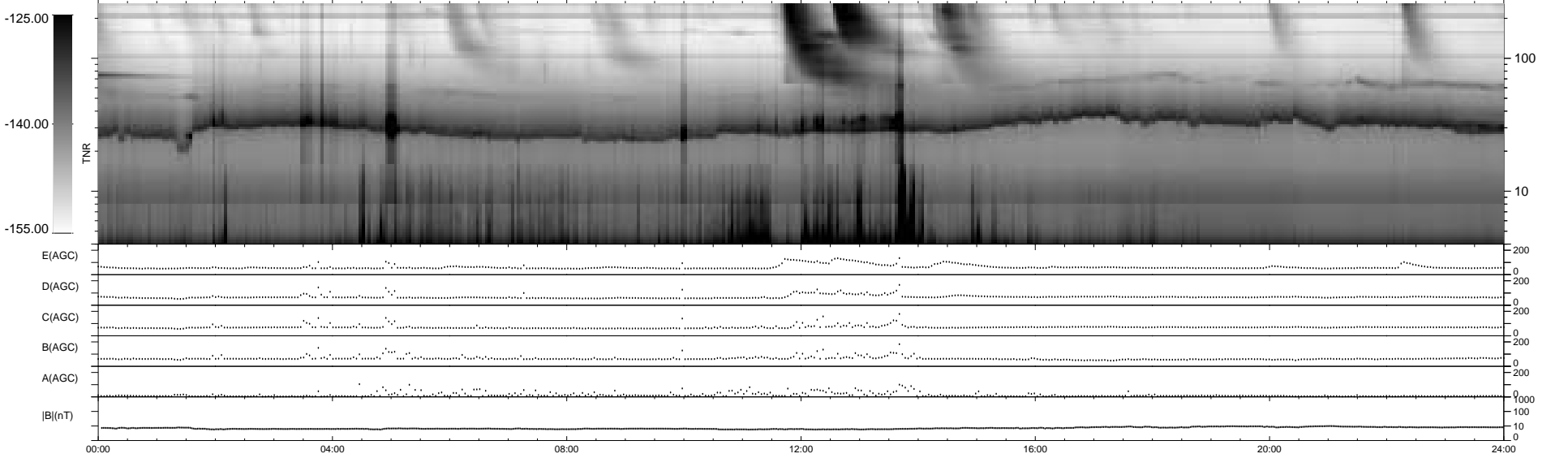
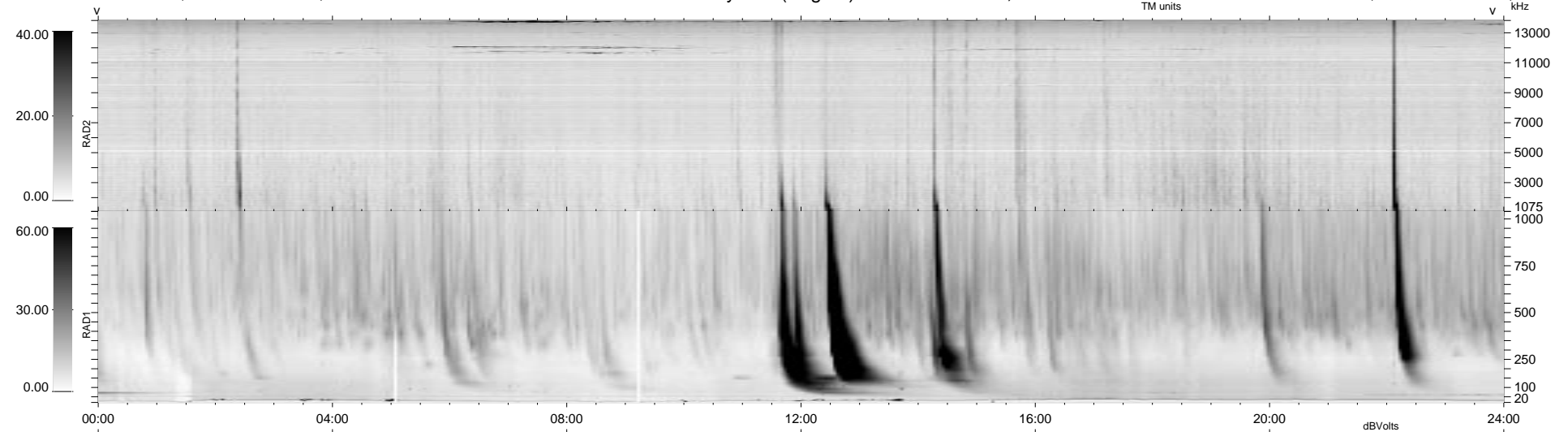


14 bad + 925 good MF/939MF projected (98%) - 0 missing MFs
Avg interval = 180 secs
Re = 229.23 (228.24, -21.08, -2.75 GSE)

1.7d VMS-SunOS LZ version = v01
DAILY Tue Sep 16, 2008
Re = 228.74 (227.80, -20.64, -1.65 GSE)

WIND/WAVES Summary Plot (Page 1) for 01-APR-1998, DOY = 91



RAD2
Antenna Ey
Mode LIN(1)
SUM/SEP SUM
Toggle OFF

RAD1
Antenna Ex
Mode LIS(2,3)
SUM/SEP SUM
Toggle OFF

TNR
Antenna ExEy
Mode A-32
Sweep ABCDE