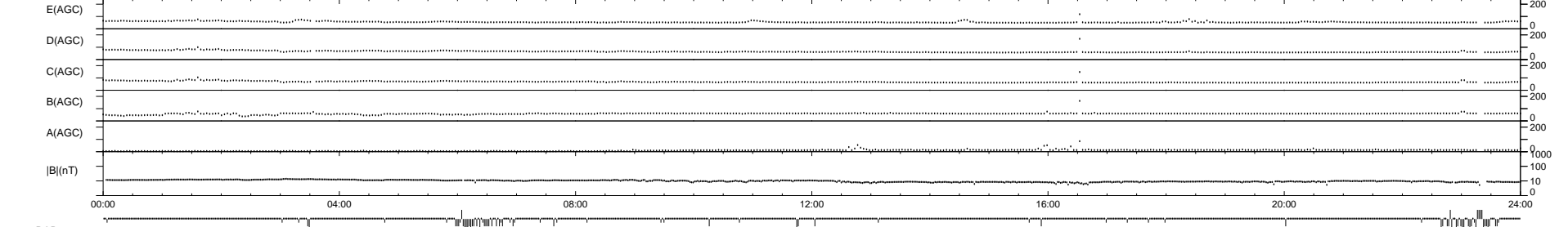
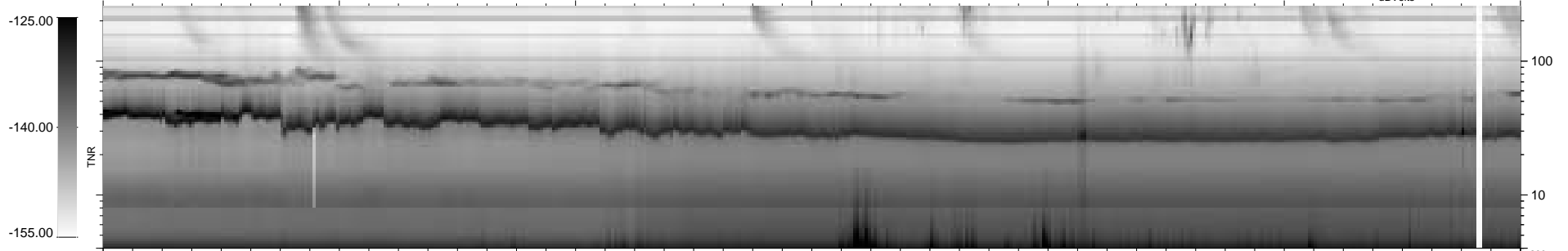
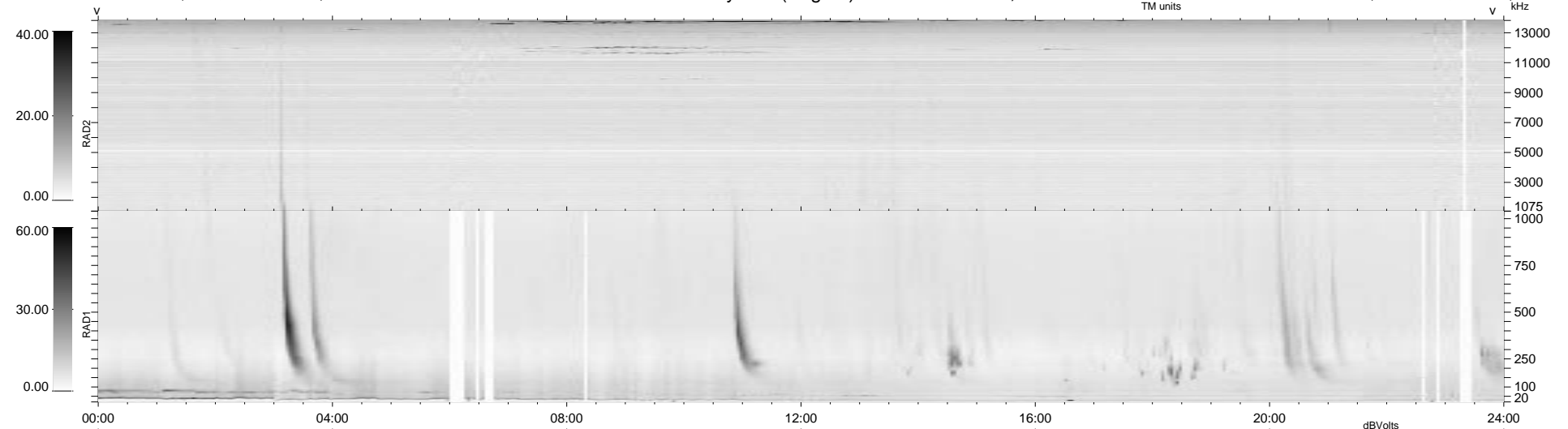


77 bad + 856 good MF/939MF projected (91%) - 6 missing MFs
 Avg interval = 180 secs
 Re = -231.54 (230.18, -23.40, -9.16 GSE)

1.7d VMS-SunOS LZ version = v01
 DAILY Tue Sep 16, 2008
 Re = 231.26 (229.95, -23.10, -8.13 GSE)

WIND/WAVES Summary Plot (Page 1) for 26-MAR-1998, DOY = 85



RAD2
 Antenna Ey
 Mode LIN(1)
 SUM/SEP SUM
 Toggle OFF

RAD1
 Antenna Ex
 Mode LIS(2,3)
 SUM/SEP SUM
 Toggle OFF

TNR
 Antenna ExEy
 Mode A-32
 Sweep ABCDE