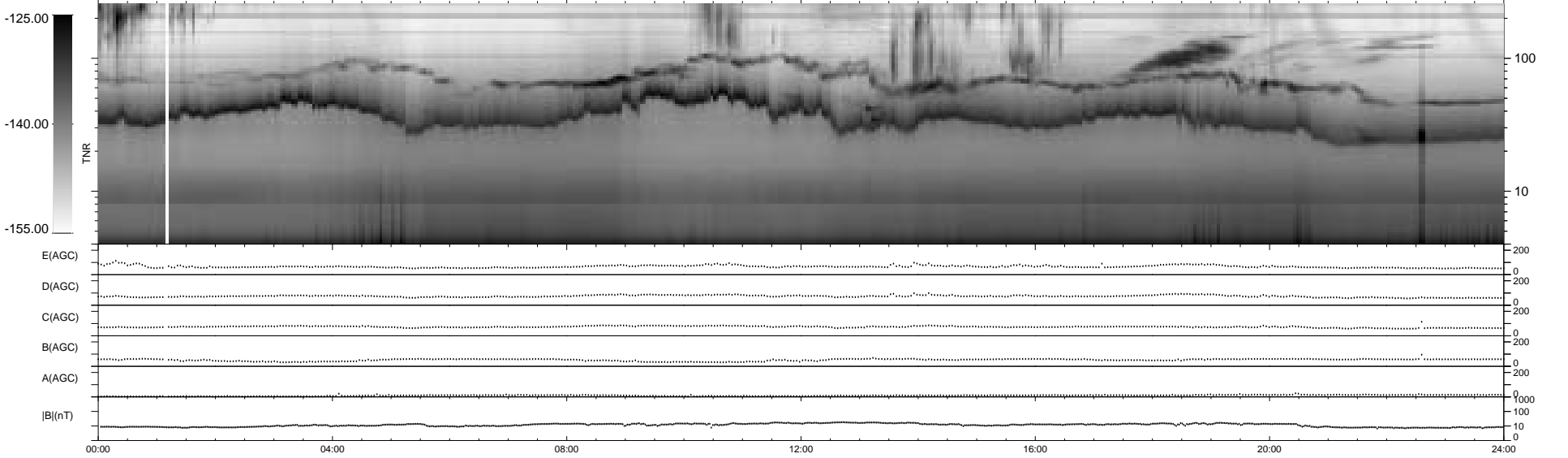
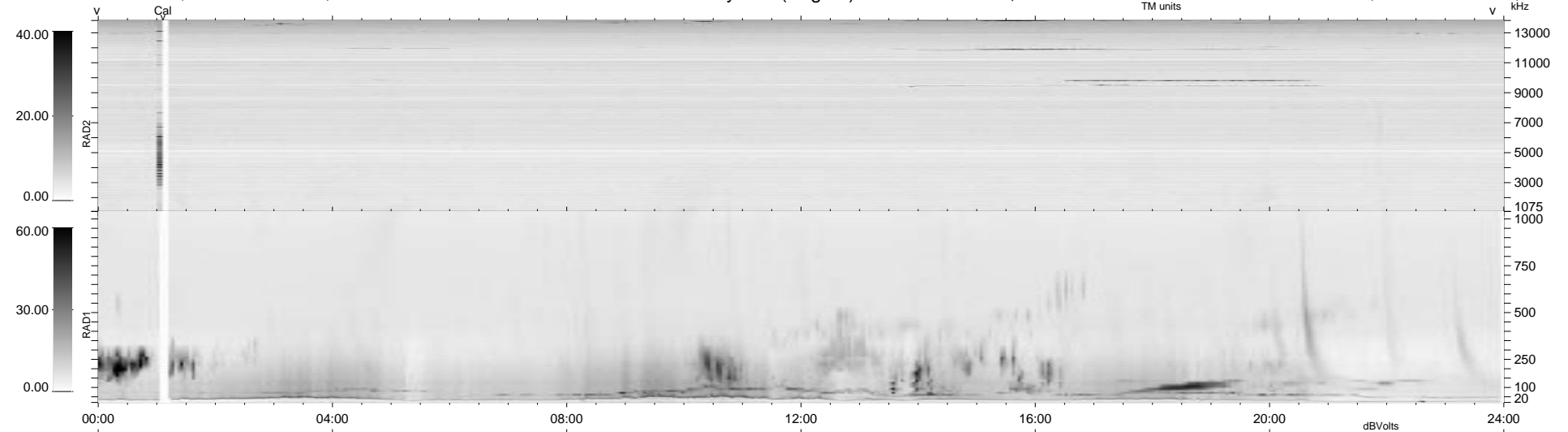


6 bad + 933 good MF/939MF projected (99%) - 0 missing MFs  
 Avg interval = 180 secs  
 Re = -232.56 (230.88, -24.06, -14.19 GSE)

1.7d VMS-SunOS LZ version = v01  
 DAILY Tue Sep 16, 2008  
 Re = 232.40 (230.77, -24.05, -13.23 GSE)

### WIND/WAVES Summary Plot (Page 1) for 21-MAR-1998, DOY = 80



E(AGC) 0 200  
 D(AGC) 0 200  
 C(AGC) 0 200  
 B(AGC) 0 200  
 A(AGC) 0 200  
 |B|(nT) 0 1000  
 0 100  
 0 10

00:00 04:00 08:00 12:00 16:00 20:00 24:00

RAD2  
 Antenna Ey  
 Mode LIN(1)  
 SUM/SEP SUM  
 Toggle OFF

RAD1  
 Antenna Ex  
 Mode LIS(2,3)  
 SUM/SEP SUM  
 Toggle OFF

TNR  
 Antenna ExEy  
 Mode A-32  
 Sweep ABCDE