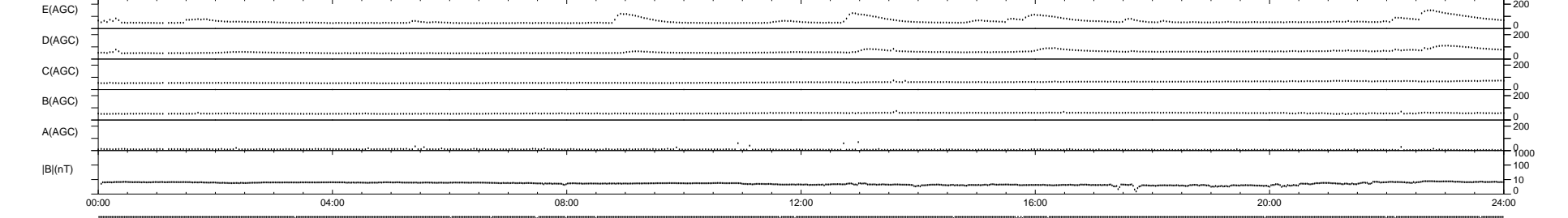
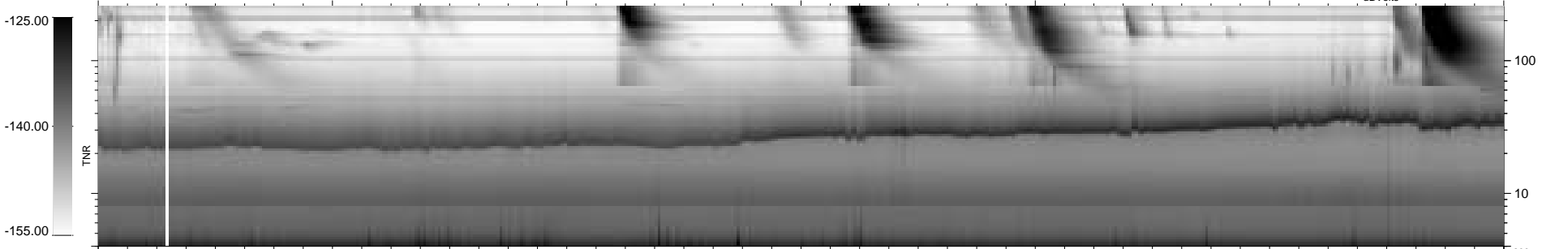
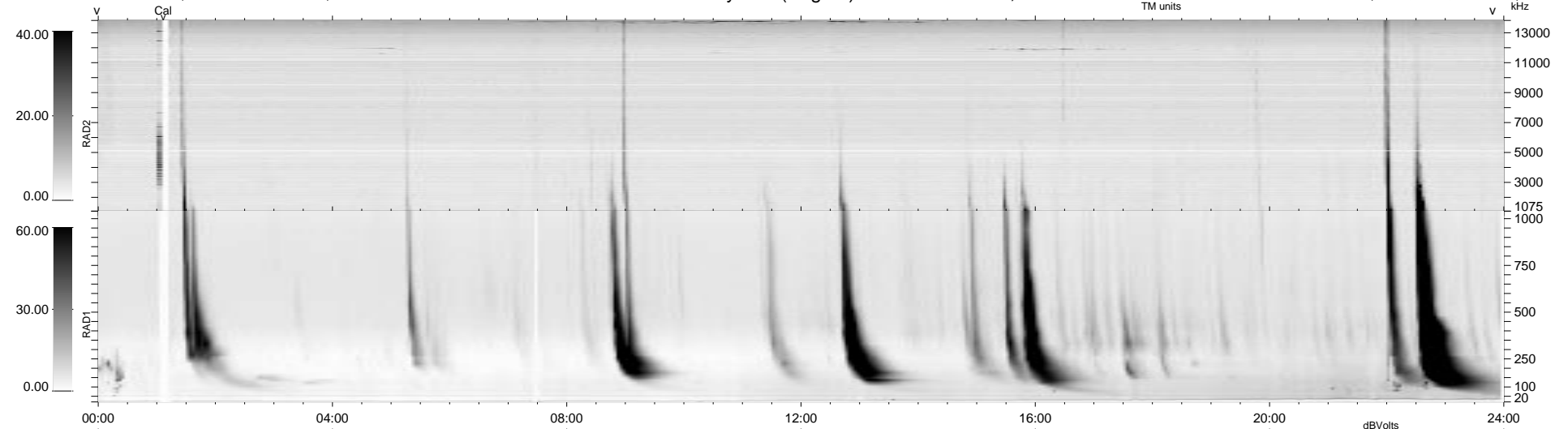


18 bad + 921 good MF/939MF projected (98%) - 0 missing MFs  
 Avg interval = 180 secs  
 Re = -232.88 (231.10, -23.86, -16.13 GSE)

1.7d VMS-SunOS LZ version = v01  
 DAILY Tue Sep 16, 2008  
 Re = 232.72 (230.98, -23.99, -15.19 GSE)

### WIND/WAVES Summary Plot (Page 1) for 19-MAR-1998, DOY = 78



```

RAD2
Antenna Ey .....
Mode LIN(1) .....
SUM/SEP SUM .....
Toggle OFF .....

RAD1
Antenna Ex .....
Mode LIS(2,3) .....
SUM/SEP SUM .....
Toggle OFF .....

TNR
Antenna ExEy .....
Mode A-32 .....
Sweep ABCDE .....
  
```