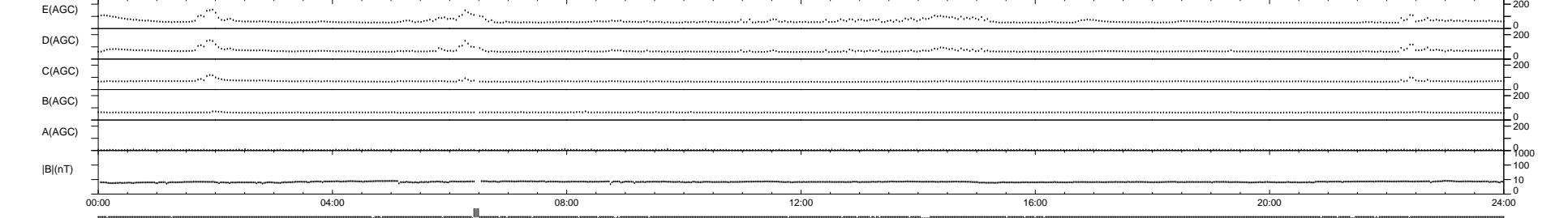
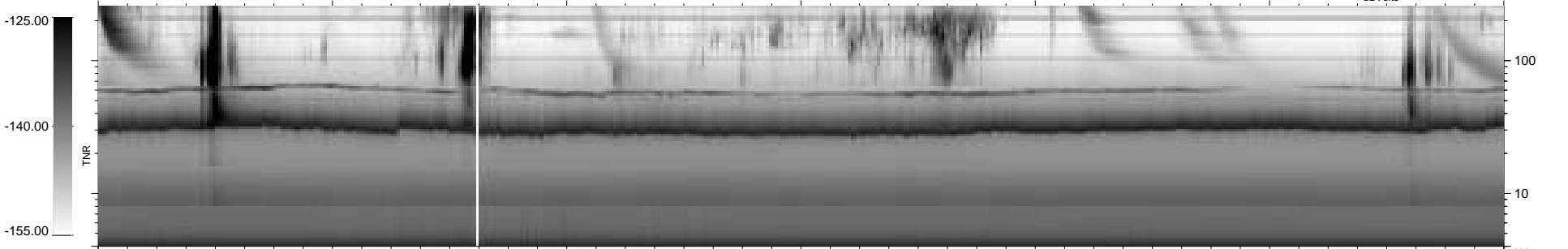
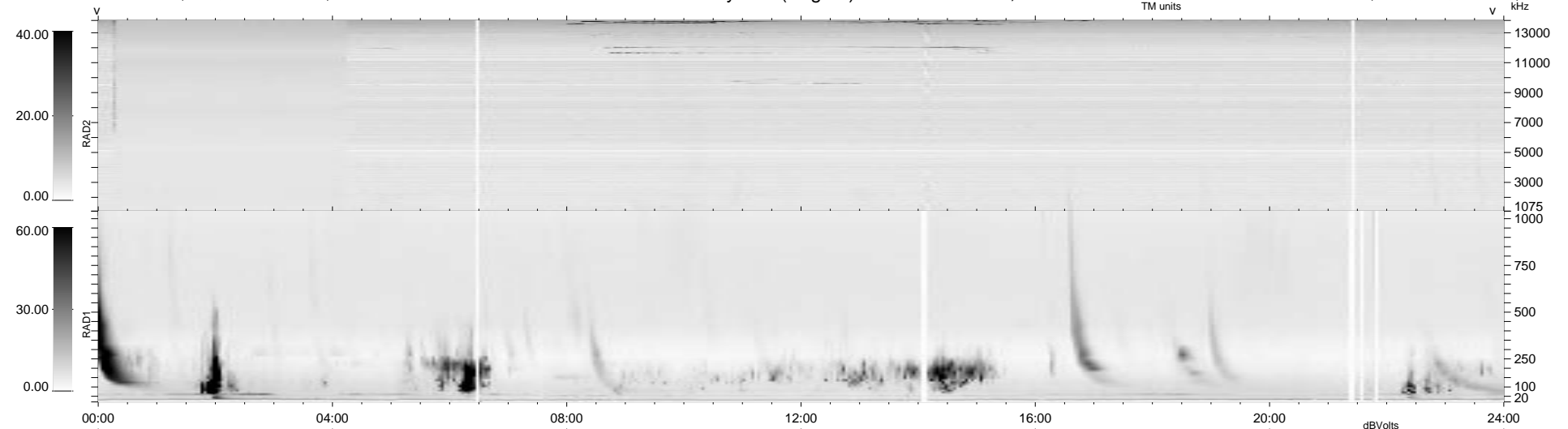


41 bad + 895 good MF/940MF projected (95%) - 4 missing MFs  
 Avg interval = 180 secs  
 Re = 233.63 (231.67, -22.81, -19.77 GSE)

1.7d VMS-SunOS LZ version = v01  
 DAILY Tue Sep 16, 2008  
 Re = 233.42 (231.50, -23.14, -18.89 GSE)

WIND/WAVES Summary Plot (Page 1) for 15-MAR-1998, DOY = 74



```

RAD2
Antenna Ey .....
Mode LIN(1) LIN(16) ..... LIN(1)
SUM/SEP SUM .SEP. .... SUM
Toggle OFF .....

RAD1
Antenna Ex .....
Mode LIS(2,3) .....
SUM/SEP SUM .....
Toggle OFF .....

TNR
Antenna ExEy .....
Mode A-32 .....
Sweep ABCDE .....
  
```