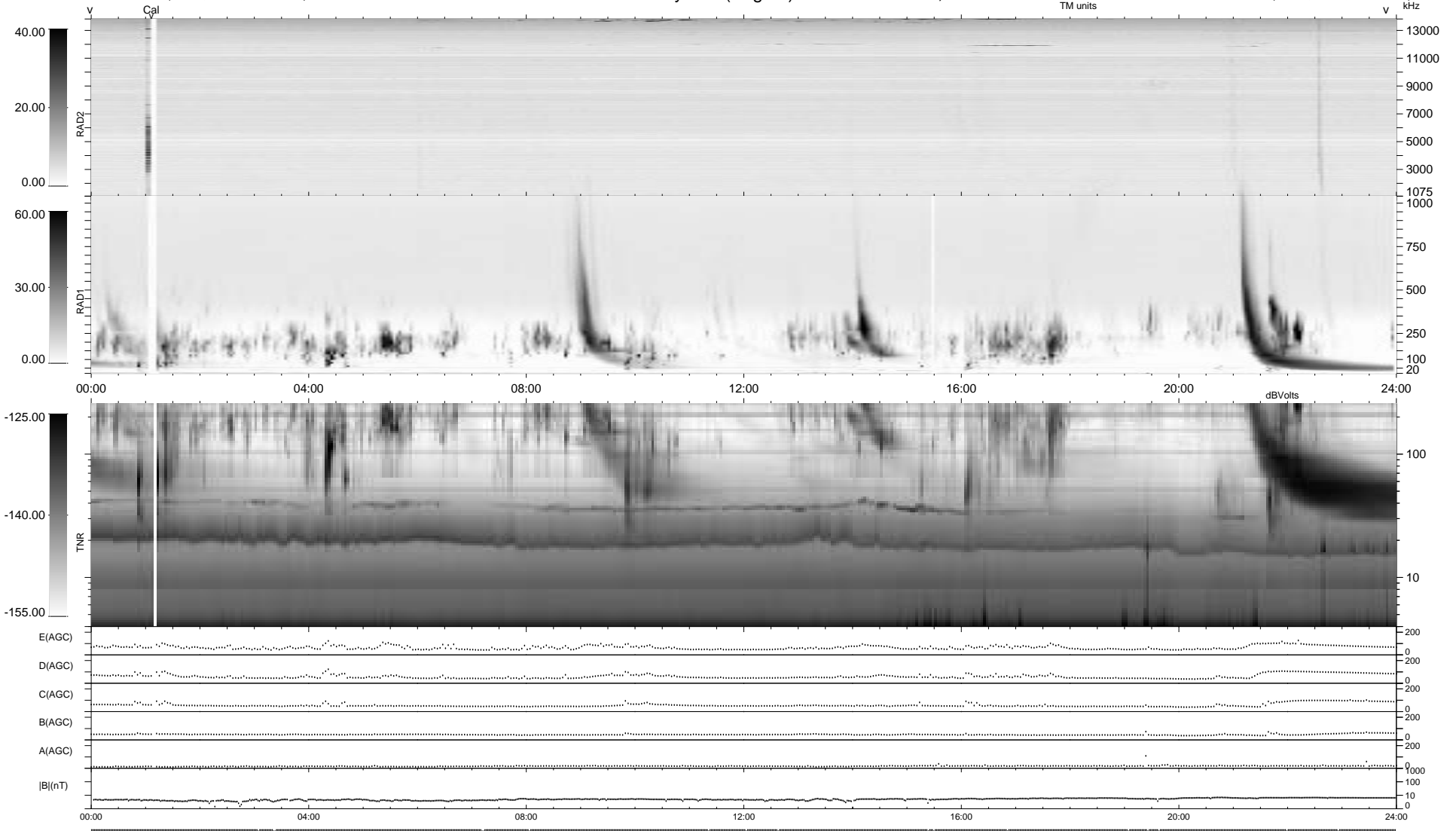


17 bad + 922 good MF/939MF projected (98%) - 0 missing MFs
 Avg interval = 180 secs
 Re = -234.11 (232.08, -22.01, -21.46 GSE)

1.7d VMS-SunOS LZ version = v01
 DAILY Tue Sep 16, 2008
 Re = 233.86 (231.87, -22.42, -20.63 GSE)

WIND/WAVES Summary Plot (Page 1) for 13-MAR-1998, DOY = 72



```

RAD2
Antenna Ey
Mode LIN(1)
SUM/SEP SUM
Toggle OFF
RAD1
Antenna Ex
Mode LIS(2,3)
SUM/SEP SUM
Toggle OFF
TNR
Antenna ExEy
Mode A-32
Sweep ABCDE
  
```