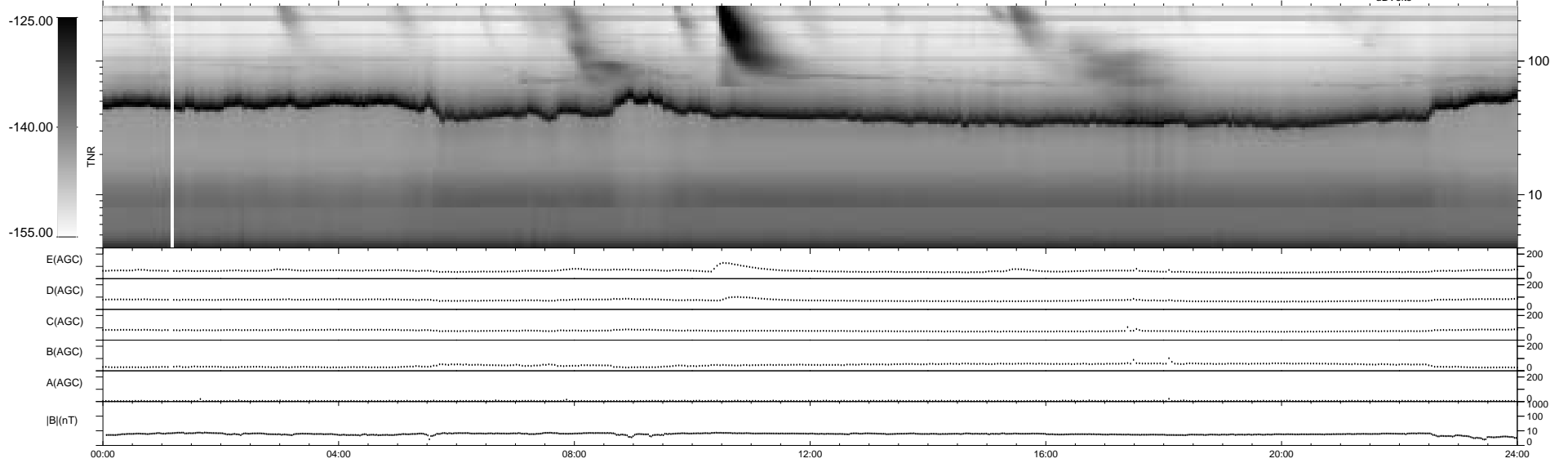
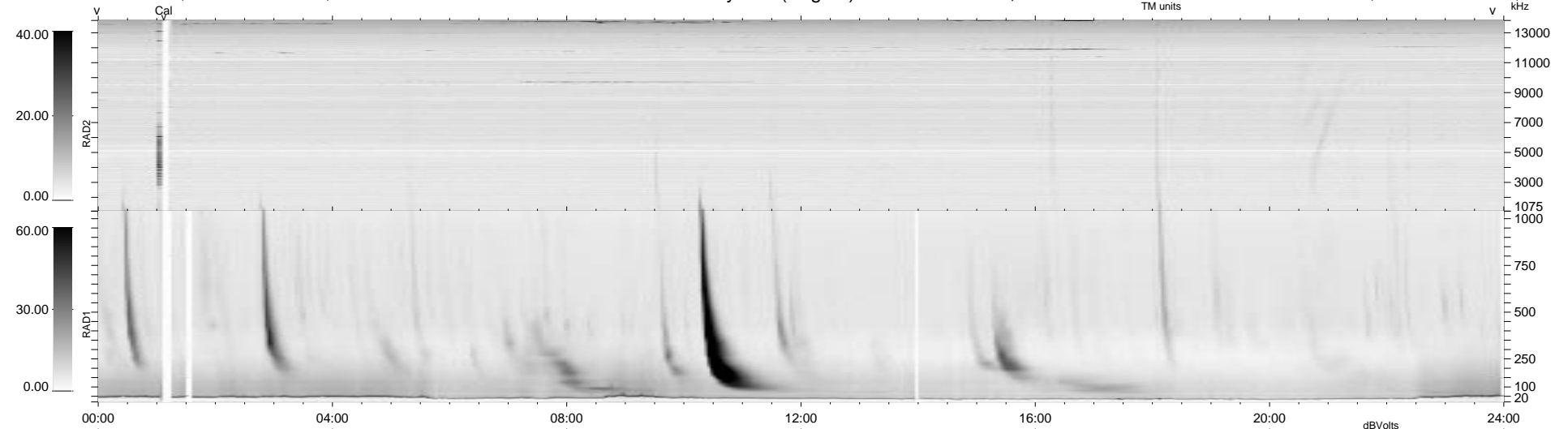


11 bad + 928 good MF/939MF projected (98%) - 0 missing MFs  
 Avg interval = 180 secs  
 Re = 235.32 (233.17, -20.11, -24.52 GSE)

1.7d VMS-SunOS LZ version = v01  
 DAILY Tue Sep 16, 2008  
 Re = 234.99 (232.87, -20.61, -23.80 GSE)

### WIND/WAVES Summary Plot (Page 1) for 09-MAR-1998, DOY = 68



```

RAD2
Antenna Ey
Mode LIN(1)
SUM/SEP SUM
Toggle OFF

RAD1
Antenna Ex
Mode LIS(2,3)
SUM/SEP SUM
Toggle OFF

TNR
Antenna ExEy
Mode A-32
Sweep ABCDE
  
```