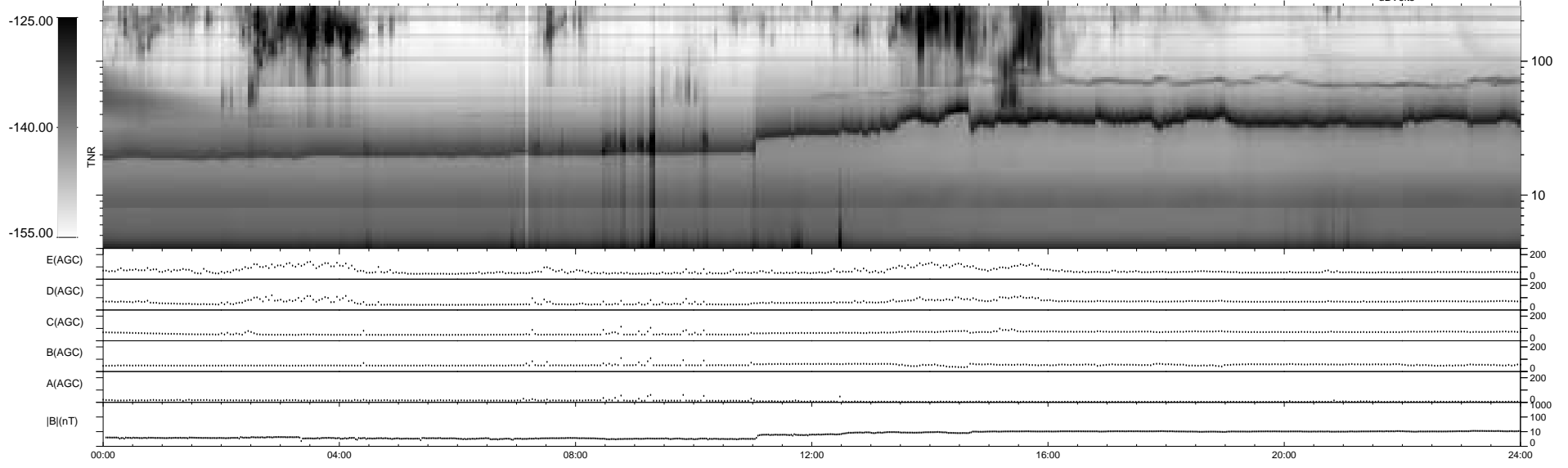
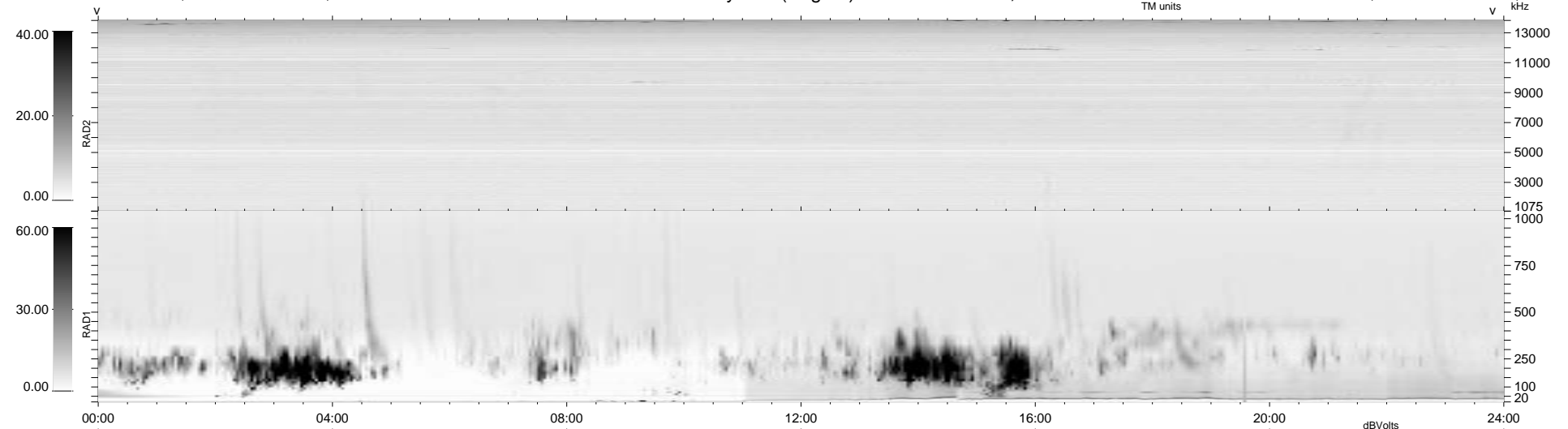


11 bad + 928 good MF/939MF projected (98%) - 0 missing MFs
 Avg interval = 180 secs
 Re = -237.08 (234.80, -17.62, -27.64 GSE)

1.7d VMS-SunOS LZ version = v01
 DAILY Tue Sep 16, 2008
 Re = 236.73 (234.48, -18.10, -27.09 GSE)

WIND/WAVES Summary Plot (Page 1) for 04-MAR-1998, DOY = 63



E(AGC) 0 200
 D(AGC) 0 200
 C(AGC) 0 200
 B(AGC) 0 200
 A(AGC) 0 200
 |B|(nT) 0 1000 10 0

RAD2
 Antenna Ey
 Mode LIN(1)
 SUM/SEP SUM
 Toggle OFF

RAD1
 Antenna Ex
 Mode LIS(2,3)
 SUM/SEP SUM
 Toggle OFF

TNR
 Antenna ExEy
 Mode A-32
 Sweep ABCDE