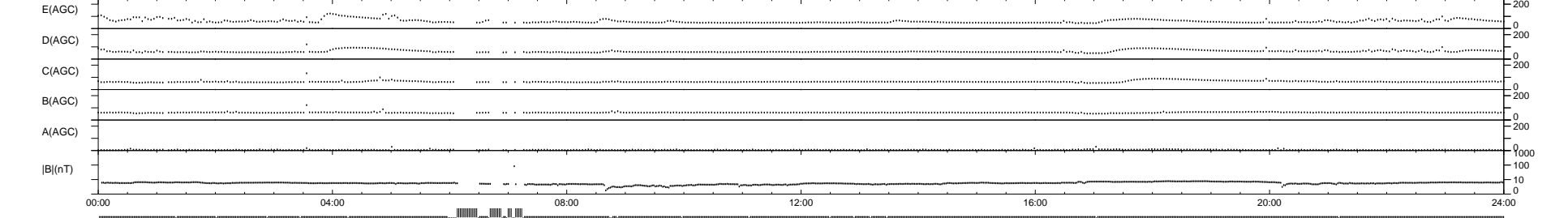
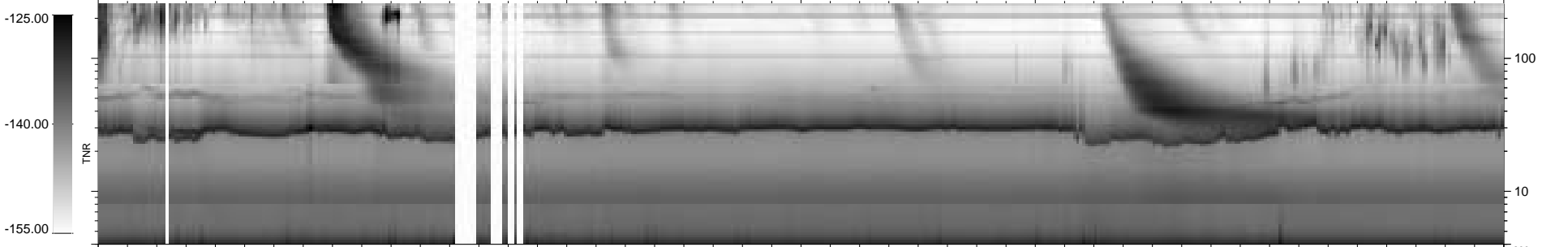
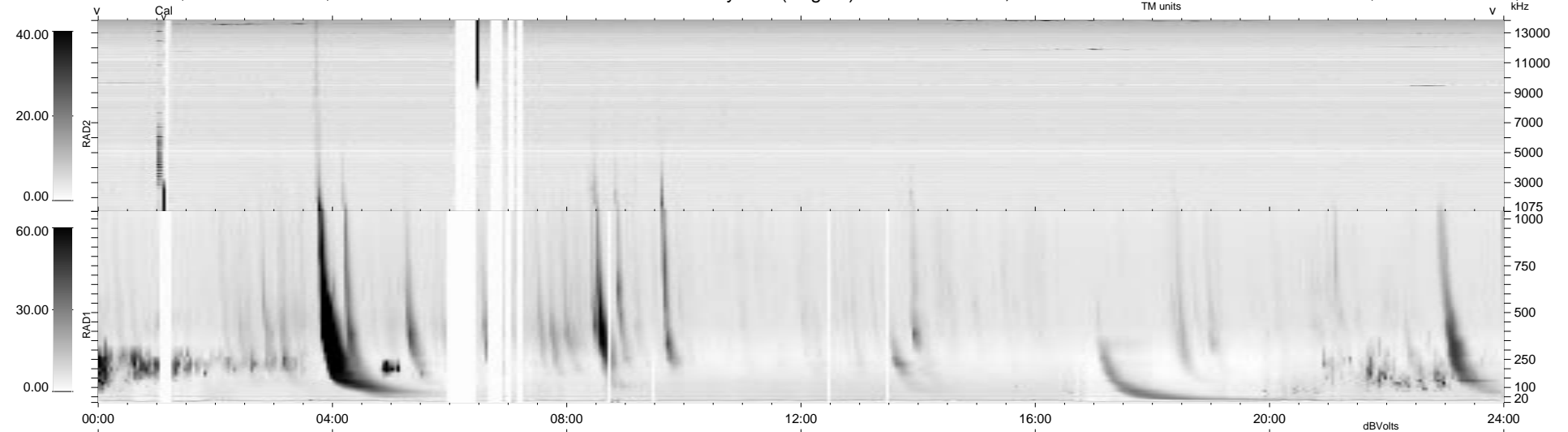


29 bad + 880 good MF/939MF projected (93%) - 30 missing MFs  
 Avg interval = 180 secs  
 Re = 238.48 (236.12, -11.82, -31.36 GSE)

1.7d VMS-SunOS LZ version = v01  
 DAILY Tue Sep 16, 2008  
 Re = 238.55 (236.18, -12.49, -31.19 GSE)

WIND/WAVES Summary Plot (Page 1) for 21-FEB-1998, DOY = 52



RAD2  
 Antenna Ey  
 Mode LIN(1)  
 SUM/SEP SUM  
 Toggle OFF

RAD1  
 Antenna Ex  
 Mode LIS(2,3)  
 SUM/SEP SUM  
 Toggle OFF

TNR  
 Antenna ExEy  
 Mode A-32  
 Sweep ABCDE