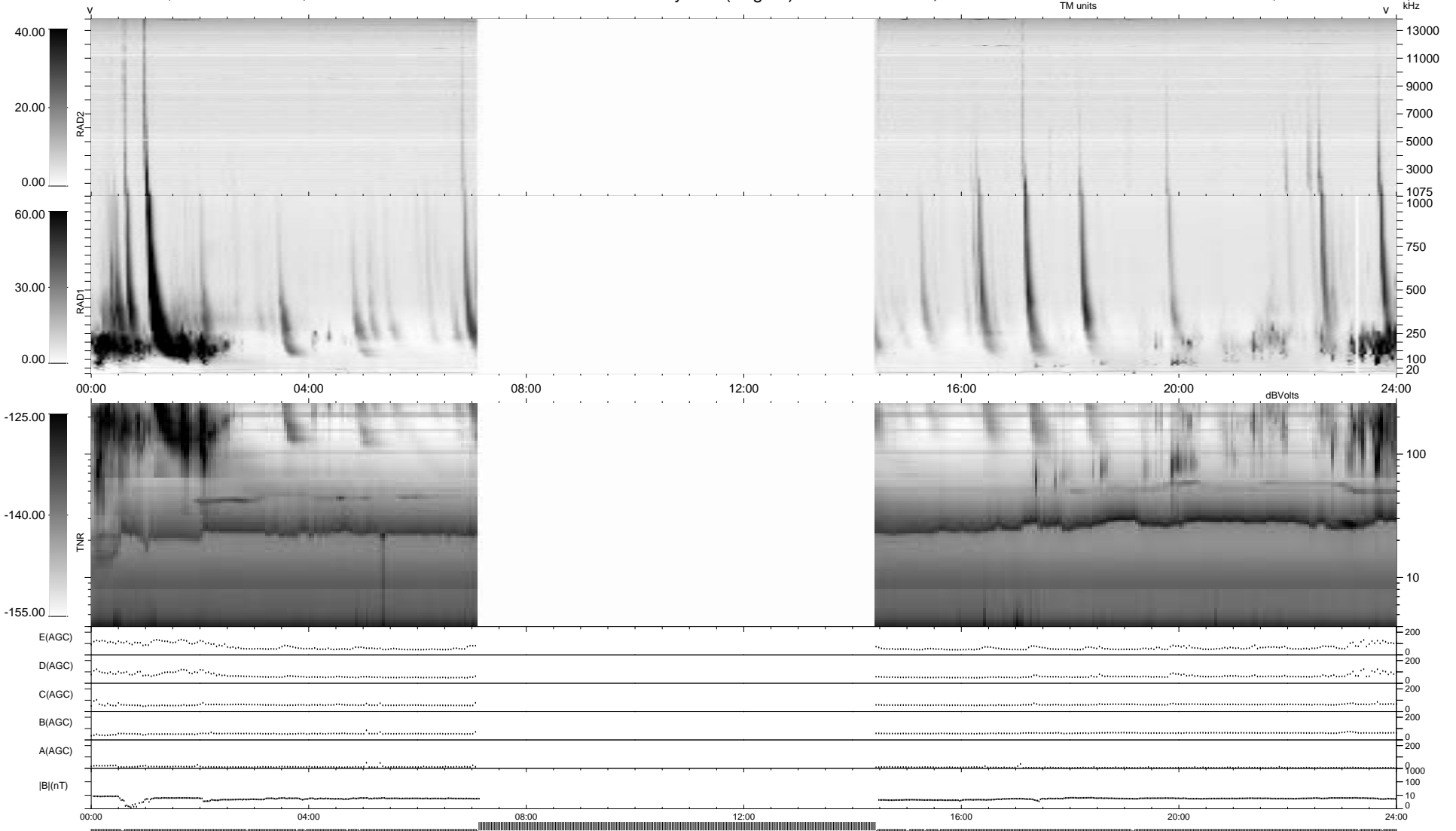


17 bad + 637 good MF/940MF projected (67%) - 286 missing MFs  
 Avg interval = 180 secs  
 Re = 238.39 (236.04, -11.10, -31.49 GSE)

1.7d VMS-SunOS LZ version = v01  
 DAILY Tue Sep 16, 2008  
 Re = 238.48 (236.11, -11.82, -31.36 GSE)

WIND/WAVES Summary Plot (Page 1) for 20-FEB-1998, DOY = 51



RAD2  
 Antenna Ey  
 Mode LIN(1)  
 SUM/SEP SUM  
 Toggle OFF  
 RAD1  
 Antenna Ex  
 Mode LIS(2,3)  
 SUM/SEP SUM  
 Toggle OFF  
 TNR  
 Antenna ExEy  
 Mode A-32  
 Sweep ABCDE