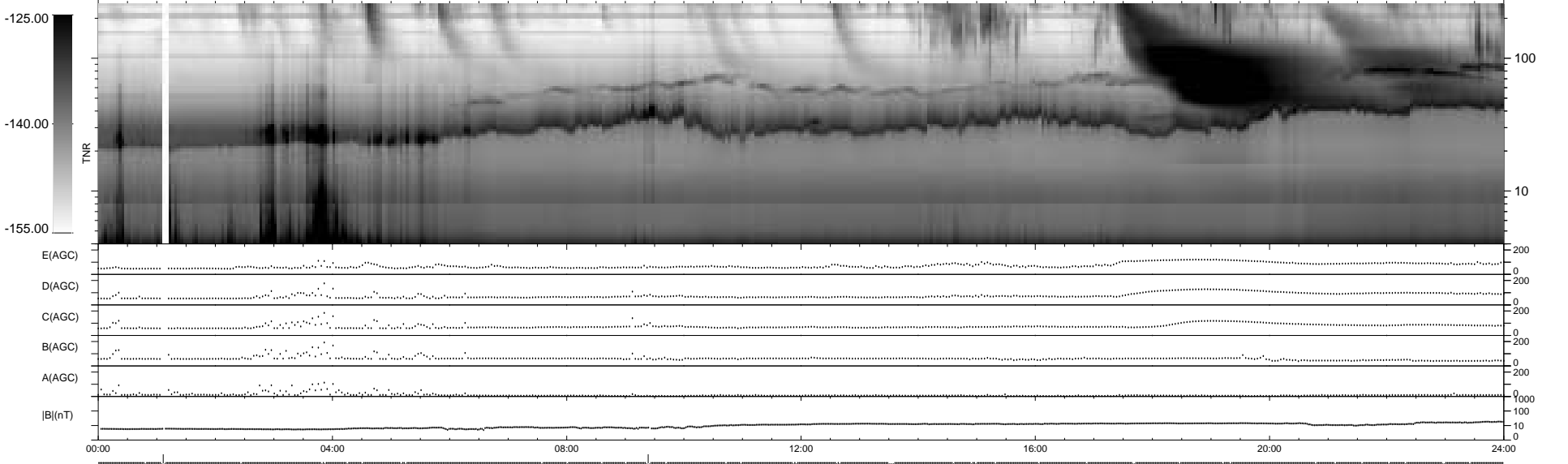
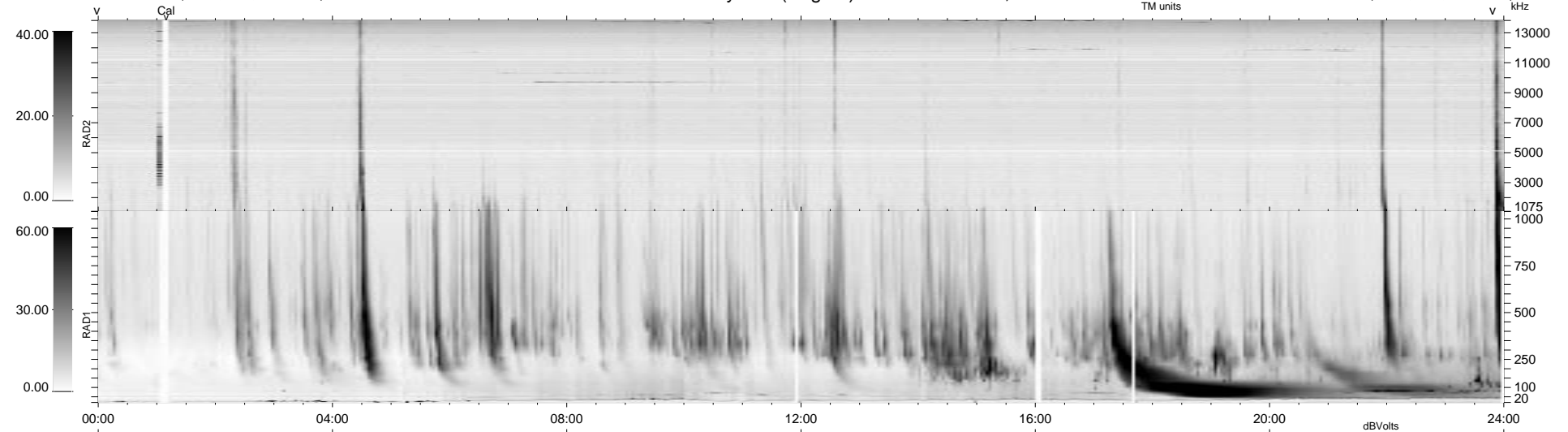


46 bad + 891 good MF/939MF projected (94%) - 2 missing MFs
 Avg interval = 180 secs
 Re = 238.04 (235.76, -8.69, -31.69 GSE)

1.7d VMS-SunOS LZ version = v01
 DAILY Tue Sep 16, 2008
 Re = 238.16 (235.85, -9.53, -31.66 GSE)

WIND/WAVES Summary Plot (Page 1) for 17-FEB-1998, DOY = 48



```

RAD2
Antenna Ey .....
Mode LIN(1) .....
SUM/SEP SUM .....
Toggle OFF .....

RAD1
Antenna Ex .....
Mode LIS(2,3) .....
SUM/SEP SUM .....
Toggle OFF .....

TNR
Antenna ExEy .....
Mode A-32 .....
Sweep ABCDE .....
  
```