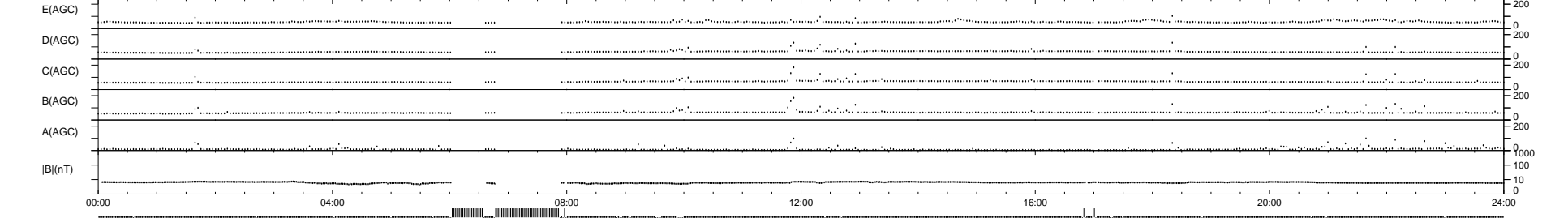
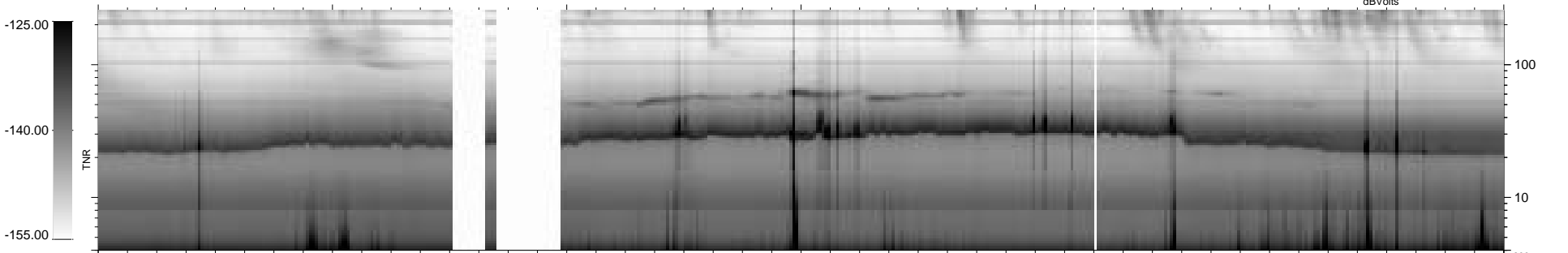
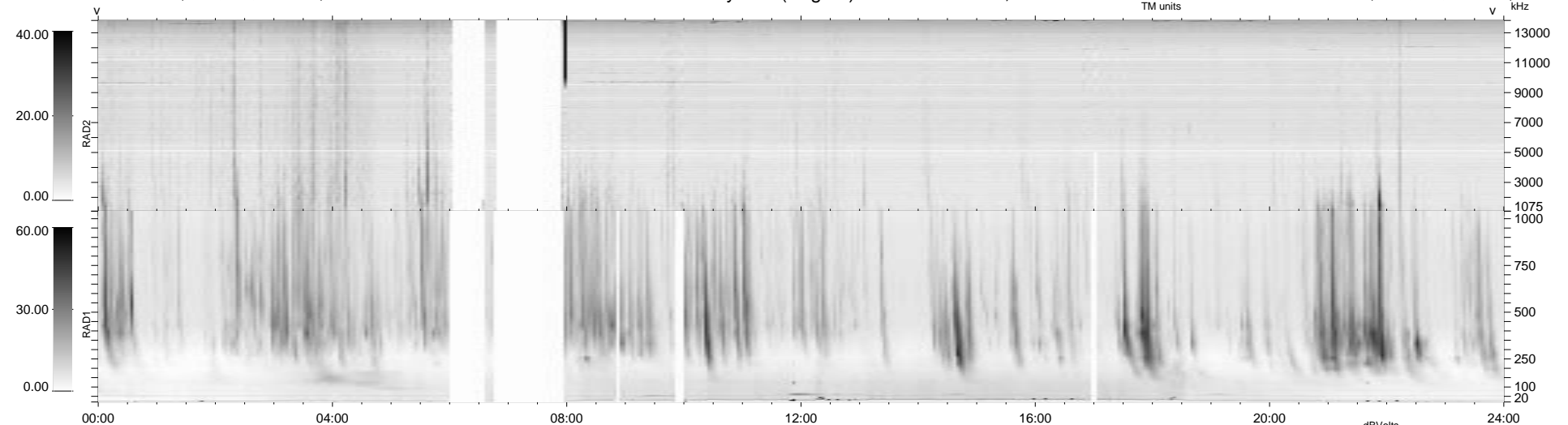


39 bad + 833 good MF/939MF projected (88%) - 67 missing MFs
 Avg interval = 180 secs
 Re = -237.92 (235.67, -7.81, -31.68 GSE)

1.7d VMS-SunOS LZ version = v02
 DAILY Tue Sep 16, 2008
 Re = 238.04 (235.76, -8.69, -31.69 GSE)

WIND/WAVES Summary Plot (Page 1) for 16-FEB-1998, DOY = 47



```

RAD2
Antenna Ey .....
Mode LIN(1) .....
SUM/SEP SUM .....
Toggle OFF .....

RAD1
Antenna Ex .....
Mode LIS(2.8) .....
SUM/SEP SUM .....
Toggle OFF .....

TNR
Antenna ExEy .....
Mode A-32 .....
Sweep ABCDE .....
  
```