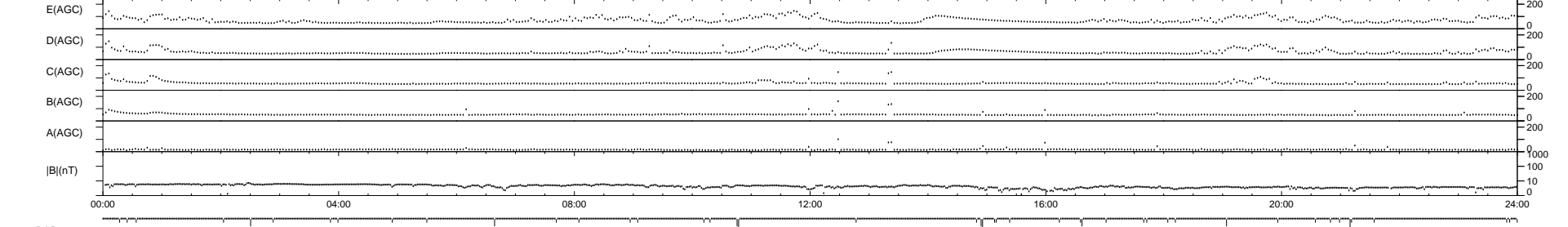
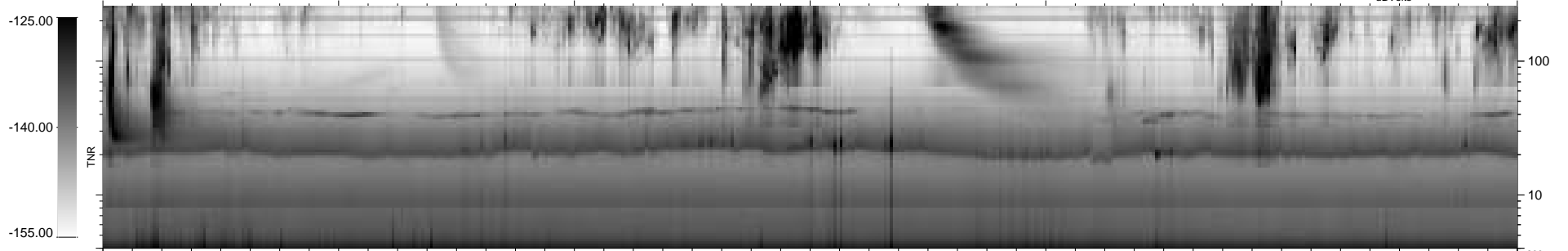
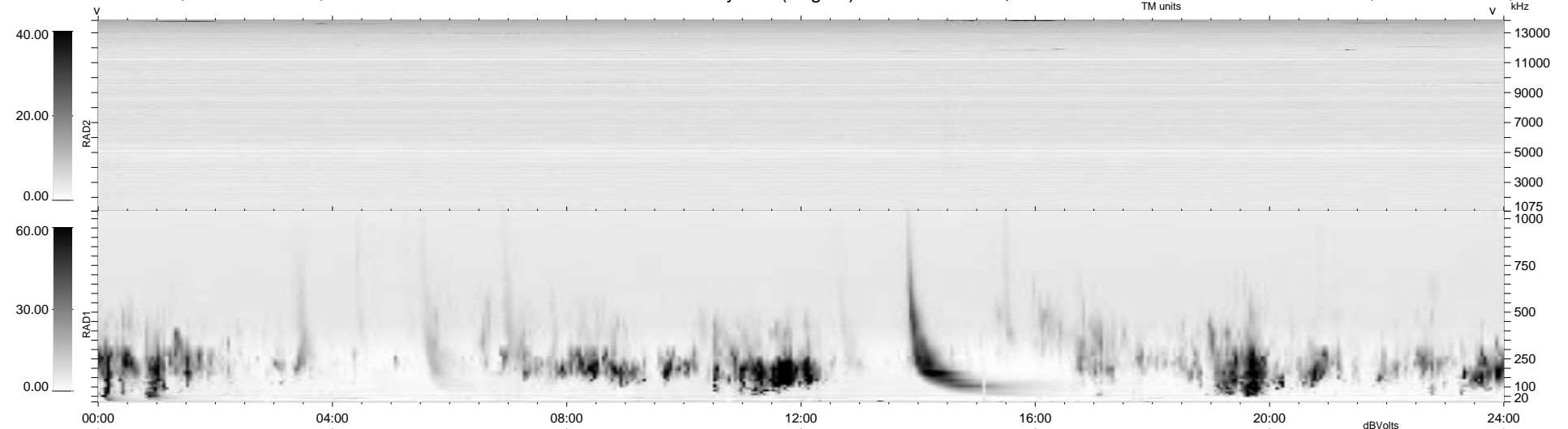


45 bad + 895 good MF/940MF projected (95%) - 0 missing MFs  
 Avg interval = 180 secs  
 Re = -237.53 (235.42, -4.03, -31.31 GSE)

1.7d VMS-SunOS LZ version = v01  
 DAILY Tue Sep 16, 2008  
 Re = 237.61 (235.46, -5.00, -31.46 GSE)

WIND/WAVES Summary Plot (Page 1) for 12-FEB-1998, DOY = 43



RAD2 Antenna Ey .....  
 Mode LIN(1) .....  
 SUM/SEP SUM .....  
 Toggle OFF .....  
 RAD1 Antenna Ex .....  
 Mode LIS(2,3) .....  
 SUM/SEP SUM .....  
 Toggle OFF .....  
 TNR Antenna ExEy .....  
 Mode A-32 .....  
 Sweep ABCDE .....