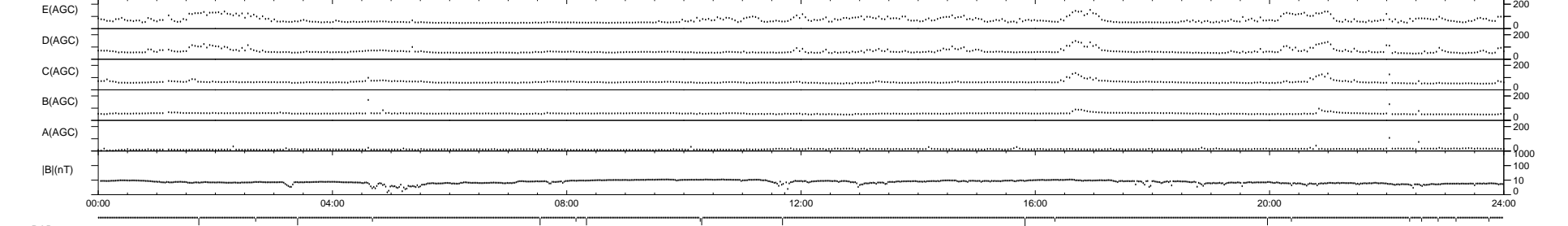
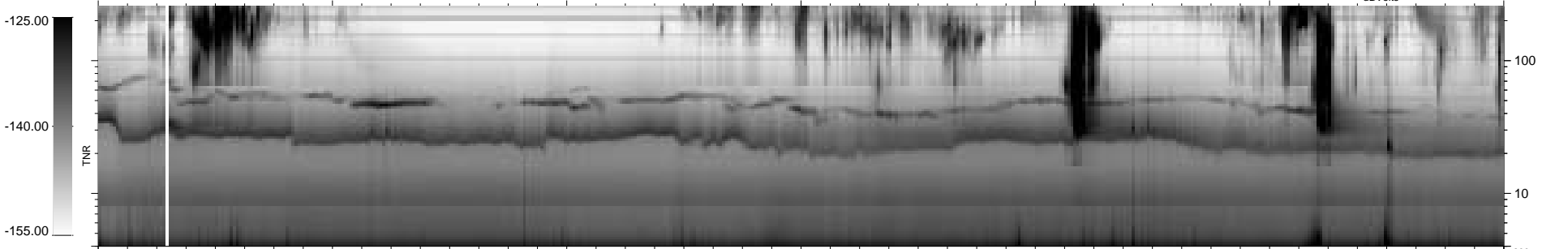
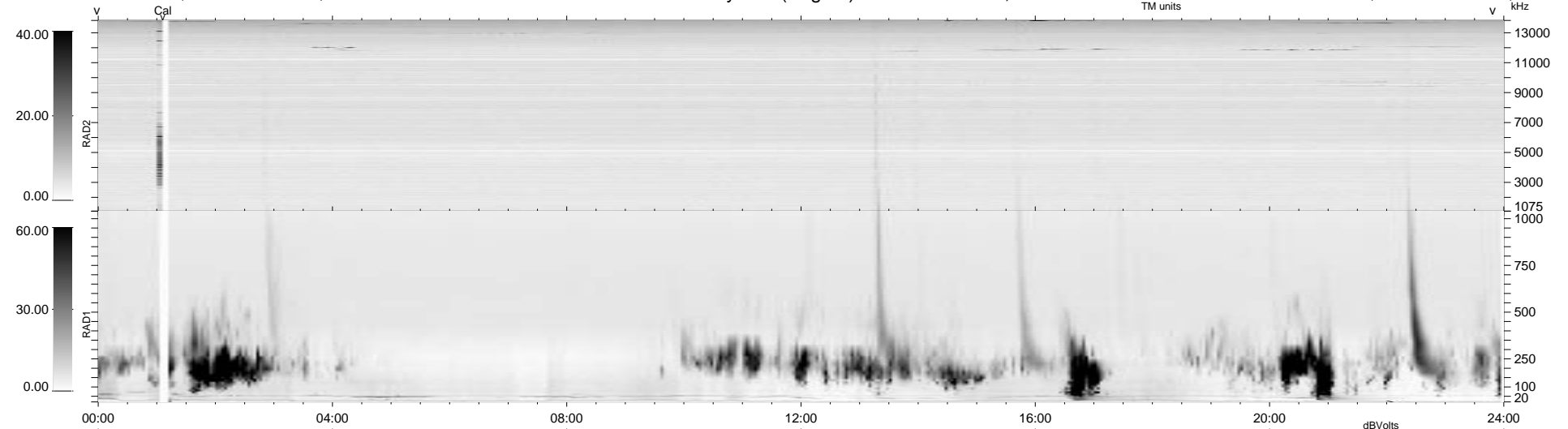


19 bad + 920 good MF/939MF projected (97%) - 0 missing MFs
 Avg interval = 180 secs
 Re = -237.47 (235.40, -3.05, -31.12 GSE)

1.7d VMS-SunOS LZ version = v01
 DAILY Tue Sep 16, 2008
 Re = 237.53 (235.42, -4.02, -31.31 GSE)

WIND/WAVES Summary Plot (Page 1) for 11-FEB-1998, DOY = 42



RAD2
 Antenna Ey
 Mode LIN(1)
 SUM/SEP SUM
 Toggle OFF
 RAD1
 Antenna Ex
 Mode LIS(2,3)
 SUM/SEP SUM
 Toggle OFF
 TNR
 Antenna ExEy
 Mode A-32
 Sweep ABCDE