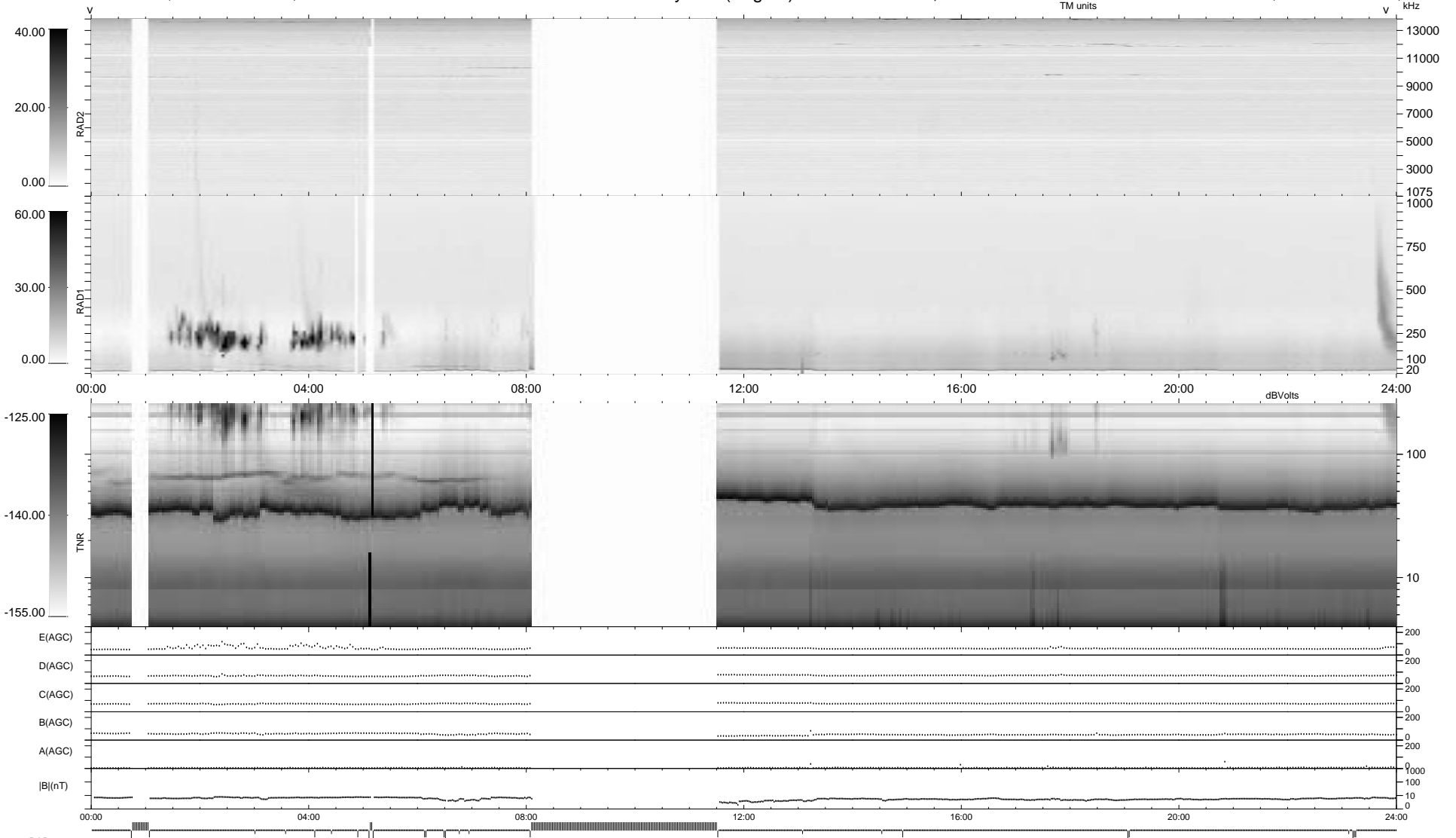


26 bad + 765 good MF/939MF projected (81%) - 148 missing MFs
 Avg interval = 180 secs
 Re = -237.42 (235.55, 1.72, -29.61 GSE)

1.7d VMS-SunOS LZ version = v01
 DAILY Tue Sep 16, 2008
 Re = 237.40 (235.50, 0.82, -29.99 GSE)

WIND/WAVES Summary Plot (Page 1) for 06-FEB-1998, DOY = 37



```

RAD2
Antenna Ey .....
Mode LIN(1) .....
SUM/SEP SUM .....
Toggle OFF .....

RAD1
Antenna Ex .....
Mode LIS(2,3) .....
SUM/SEP SUM .....
Toggle OFF .....

TNR
Antenna ExEy .....
Mode A-32 .....
Sweep ABCDE .....
  
```