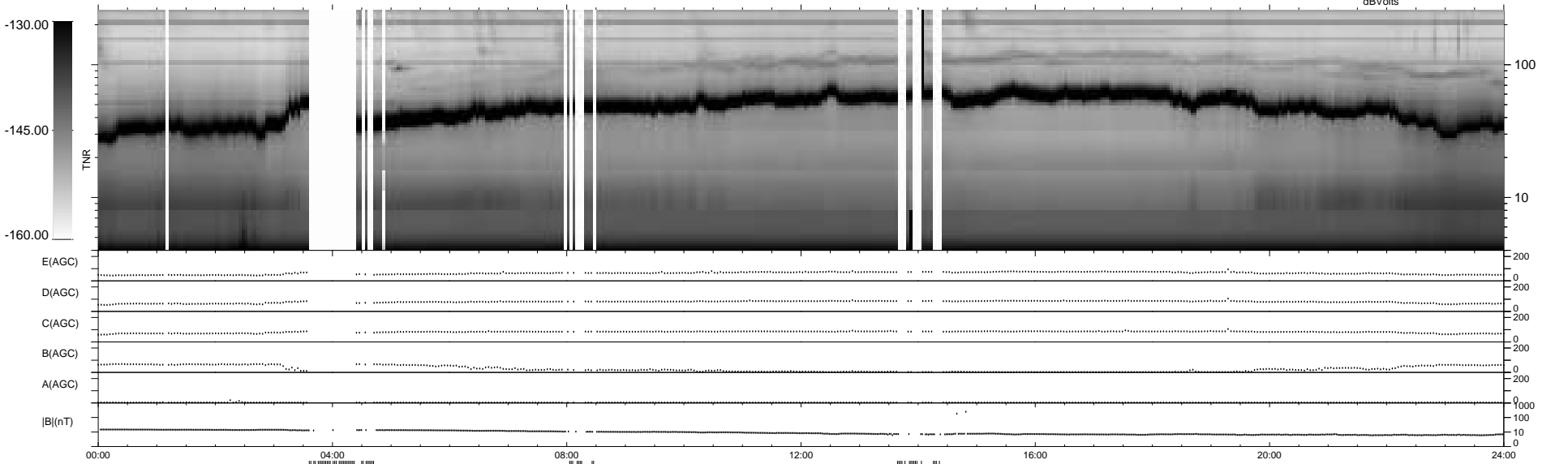
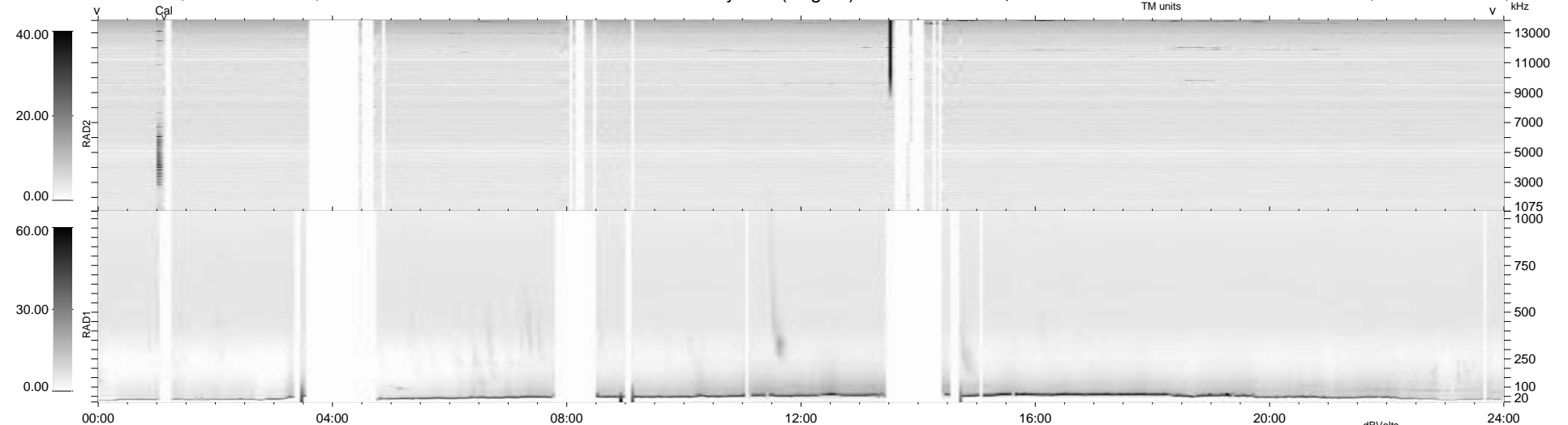


125 bad + 755 good MF/940MF projected (80%) - 60 missing MFs  
Avg interval = 180 secs  
Re = 237.43 (235.61, 2.60, -29.20 GSE)

1.7d VMS-SunOS LZ version = v01  
DAILY Tue Sep 16, 2008  
Re = 237.42 (235.56, 1.73, -29.61 GSE)

### WIND/WAVES Summary Plot (Page 1) for 05-FEB-1998, DOY = 36



RAD2  
Antenna Ey  
Mode LIN(1)  
SUM/SEP SUM  
Toggle OFF

RAD1  
Antenna Ex  
Mode LIS(2,3)  
SUM/SEP SUM  
Toggle OFF

TNR  
Antenna ExEy  
Mode A-32  
Sweep ABCDE