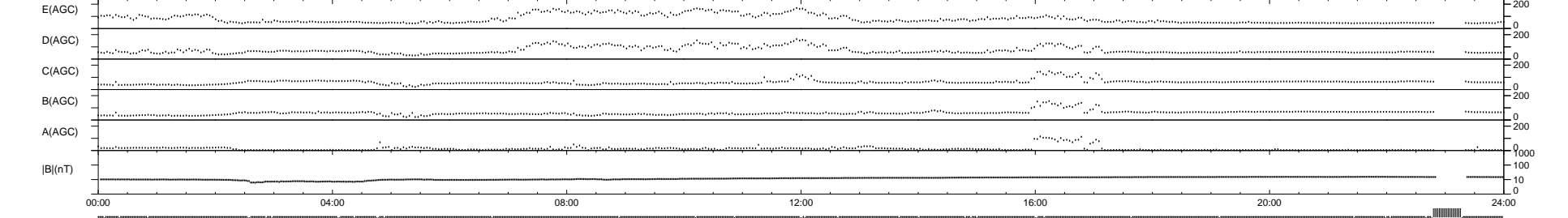
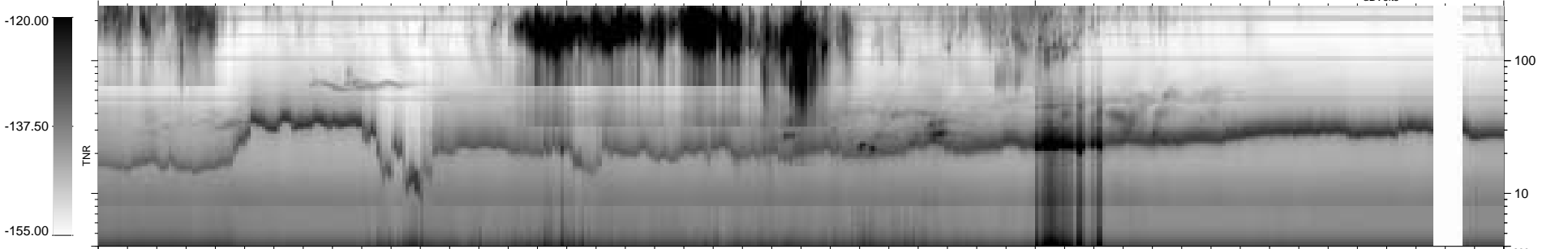
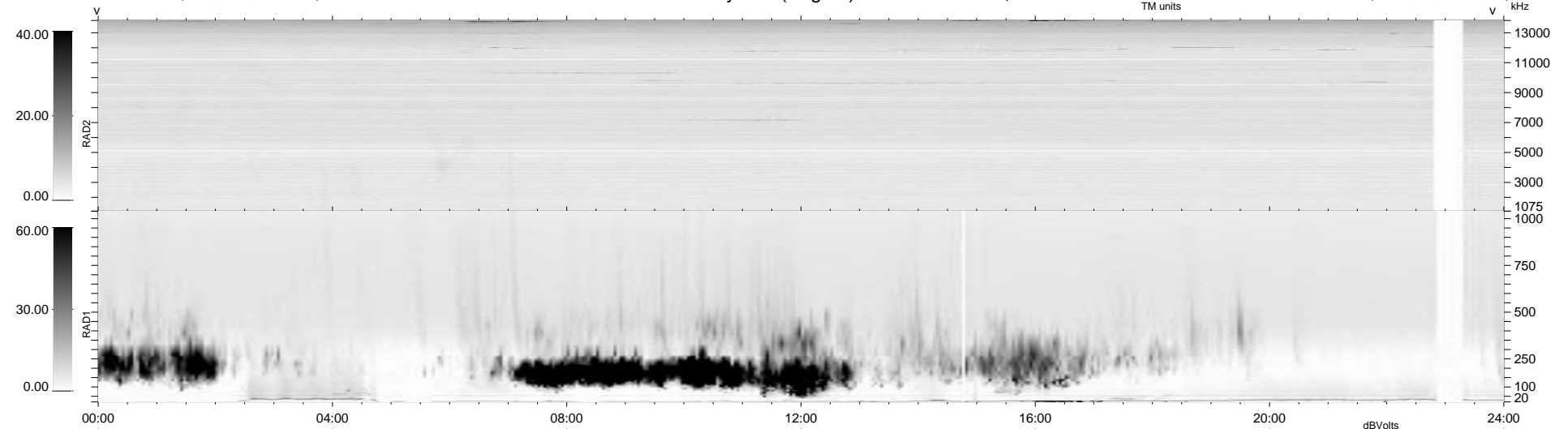


37 bad + 883 good MF/939MF projected (94%) - 19 missing MFs
 Avg interval = 180 secs
 Re = -237.44 (235.67, 3.45, -28.74 GSE)

1.7d VMS-SunOS LZ version = v01
 DAILY Tue Sep 16, 2008
 Re = 237.43 (235.61, 2.61, -29.19 GSE)

WIND/WAVES Summary Plot (Page 1) for 04-FEB-1998, DOY = 35



RAD2
 Antenna Ey
 Mode LIN(1)
 SUM/SEP SUM
 Toggle OFF

RAD1
 Antenna Ex
 Mode LIS(2,3)
 SUM/SEP SUM
 Toggle OFF

TNR
 Antenna ExEy
 Mode A-32
 Sweep ABCDE