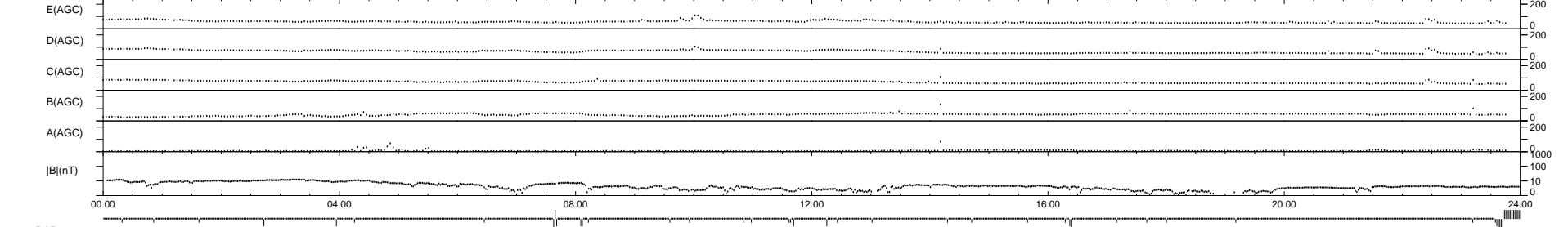
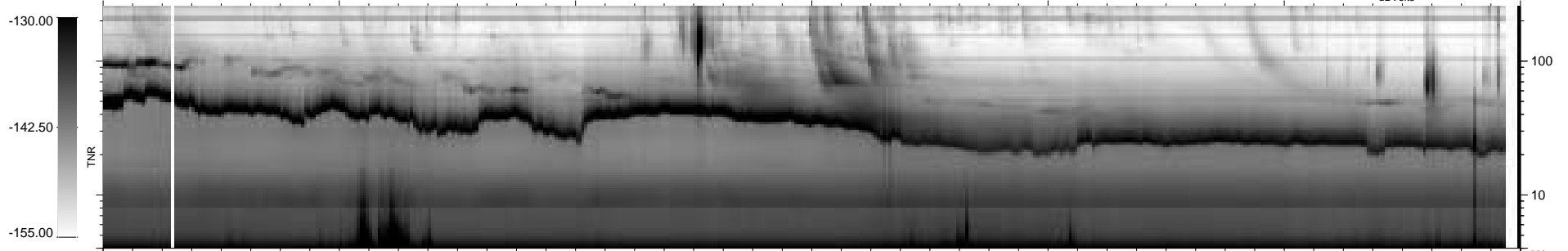
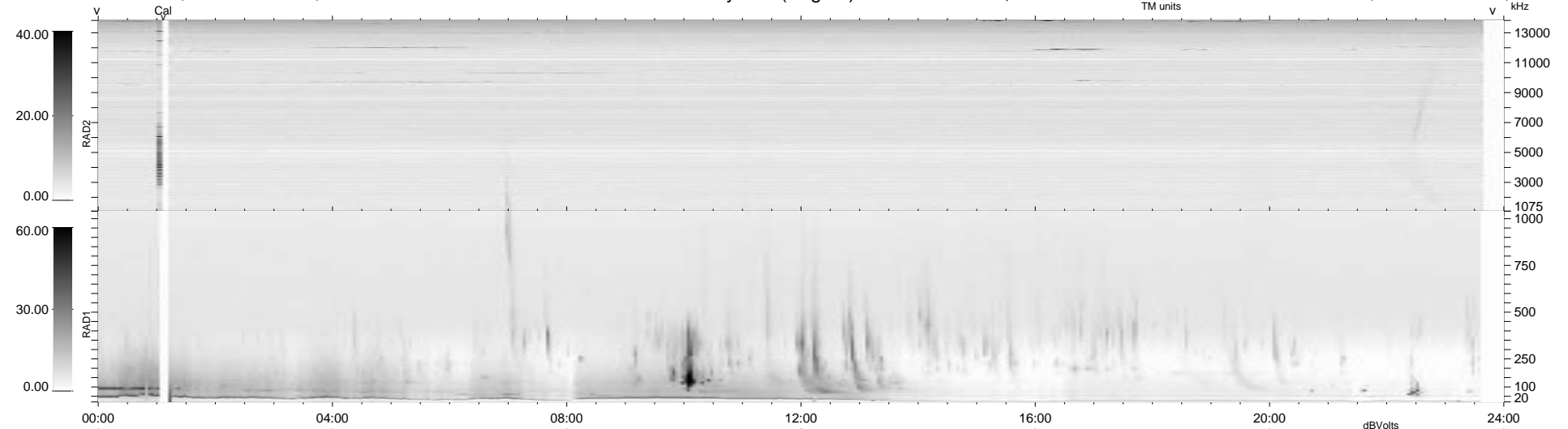


39 bad + 888 good MF/939MF projected (94%) - 12 missing MFs
 Avg interval = 180 secs
 Re = -237.35 (235.72, 5.73, -27.15 GSE)

1.7d VMS-SunOS LZ version = v01
 DAILY Tue Sep 16, 2008
 Re = 237.40 (235.73, 5.01, -27.72 GSE)

WIND/WAVES Summary Plot (Page 1) for 01-FEB-1998, DOY = 32



```

RAD2
Antenna Ey .....
Mode LIN(1) .....
SUM/SEP SUM .....
Toggle OFF .....

RAD1
Antenna Ex .....
Mode LIS(2,3) .....
SUM/SEP SUM .....
Toggle OFF .....

TNR
Antenna ExEy .....
Mode A-32 .....
Sweep ABCDE .....
  
```