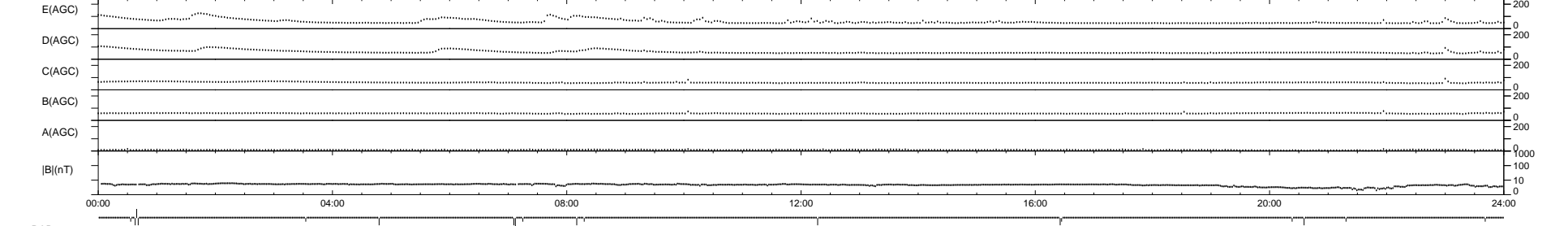
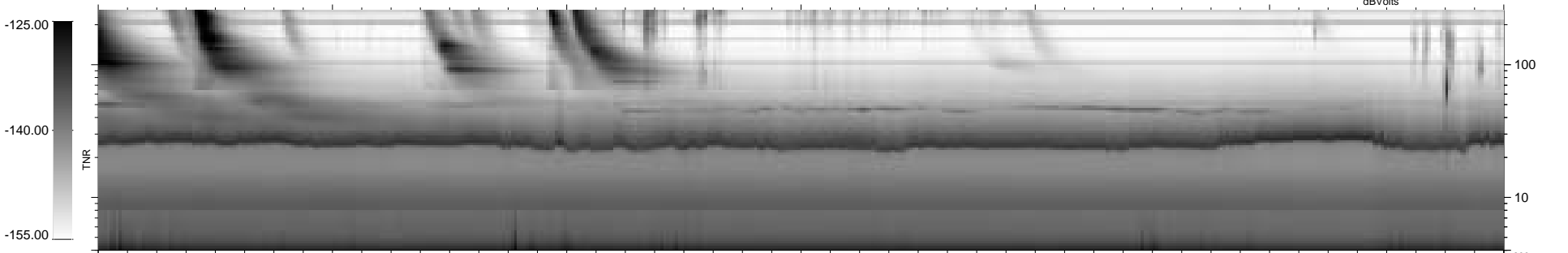
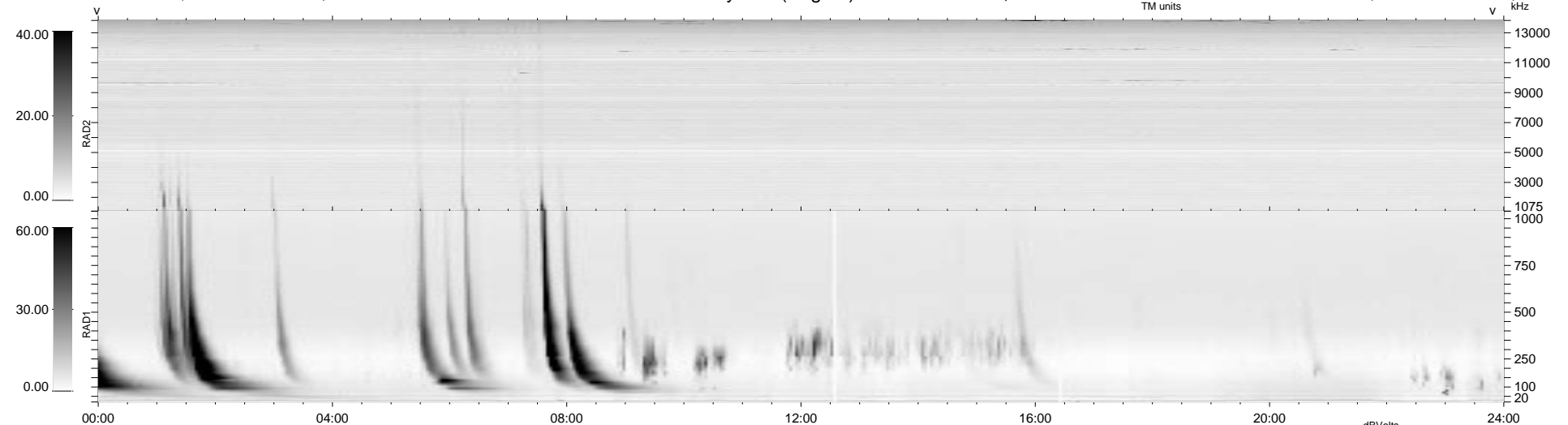


17 bad + 921 good MF/939MF projected (98%) - 1 missing MF
 Avg interval = 180 secs
 Re = 234.93 (233.74, 11.31, -20.74 GSE)

1.7d VMS-SunOS LZ version = v01
 DAILY Tue Sep 16, 2008
 Re = 235.35 (234.12, 10.70, -21.55 GSE)

WIND/WAVES Summary Plot (Page 1) for 23-JAN-1998, DOY = 23



RAD2
 Antenna Ey
 Mode LIN(1)
 SUM/SEP SUM
 Toggle OFF

RAD1
 Antenna Ex
 Mode LIS(2,3)
 SUM/SEP SUM
 Toggle OFF

TNR
 Antenna ExEy
 Mode A-32
 Sweep ABCDE