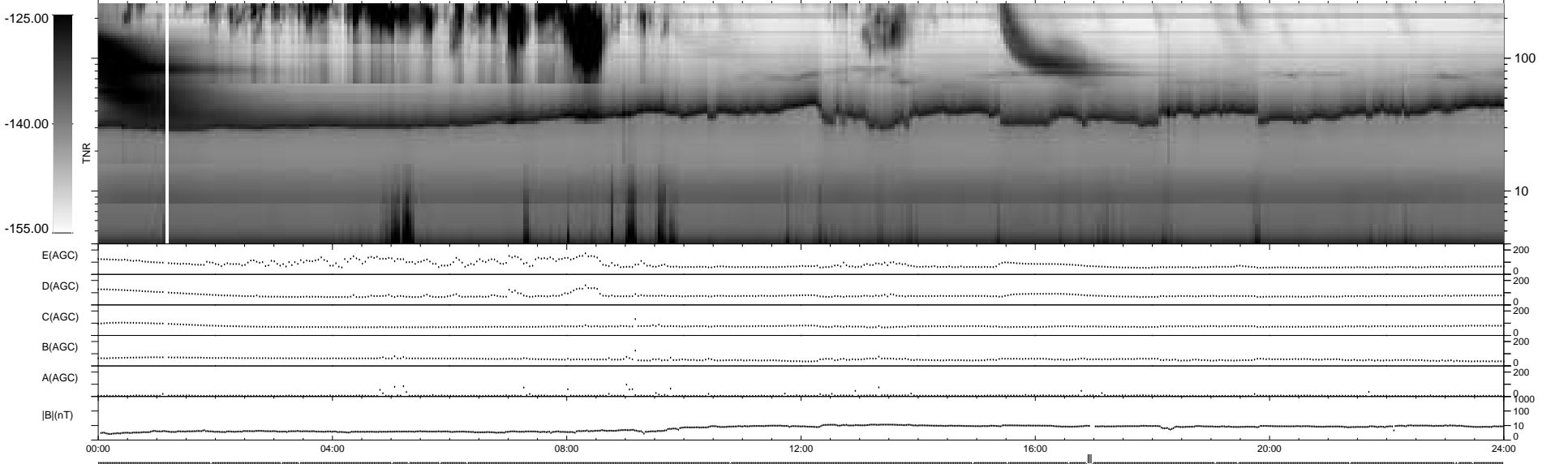
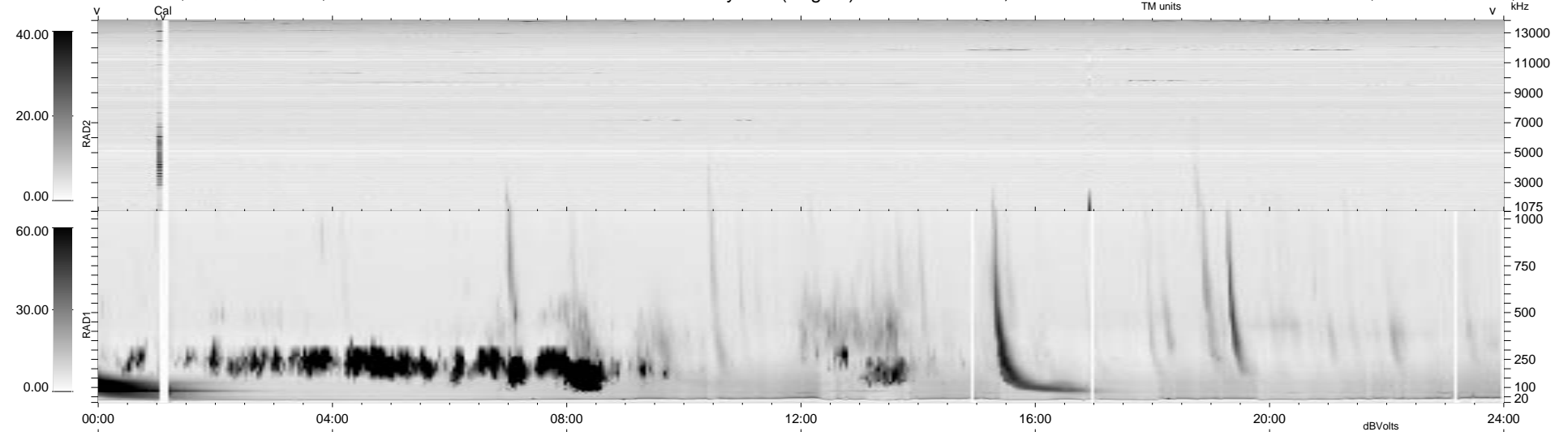


19 bad + 917 good MF/939MF projected (97%) - 3 missing MFs  
 Avg interval = 180 secs  
 Re = 232.57 (231.55, 14.46, -16.34 GSE)

1.7d VMS-SunOS LZ version = v01  
 DAILY Tue Sep 16, 2008  
 Re = 233.05 (232.00, 13.82, -17.25 GSE)

### WIND/WAVES Summary Plot (Page 1) for 18-JAN-1998, DOY = 18



```

RAD2
Antenna Ey .....
Mode LIN(1) .....
SUM/SEP SUM .....
Toggle OFF .....

RAD1
Antenna Ex .....
Mode LIS(2,3) .....
SUM/SEP SUM .....
Toggle OFF .....

TNR
Antenna ExEy .....
Mode A-32 .....
Sweep ABCDE .....
  
```