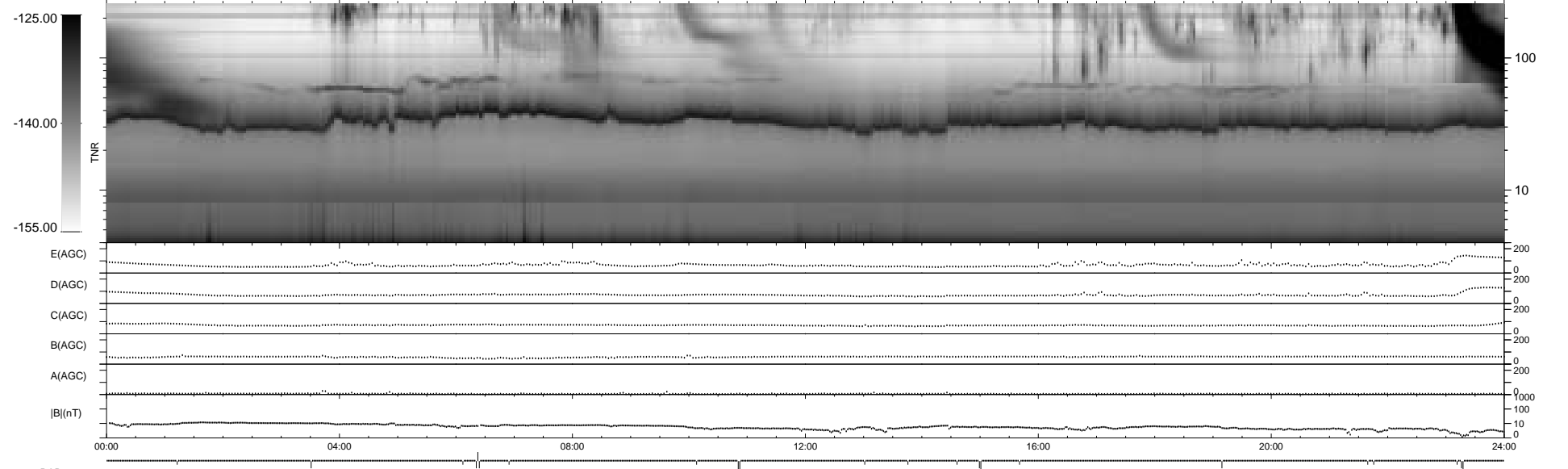
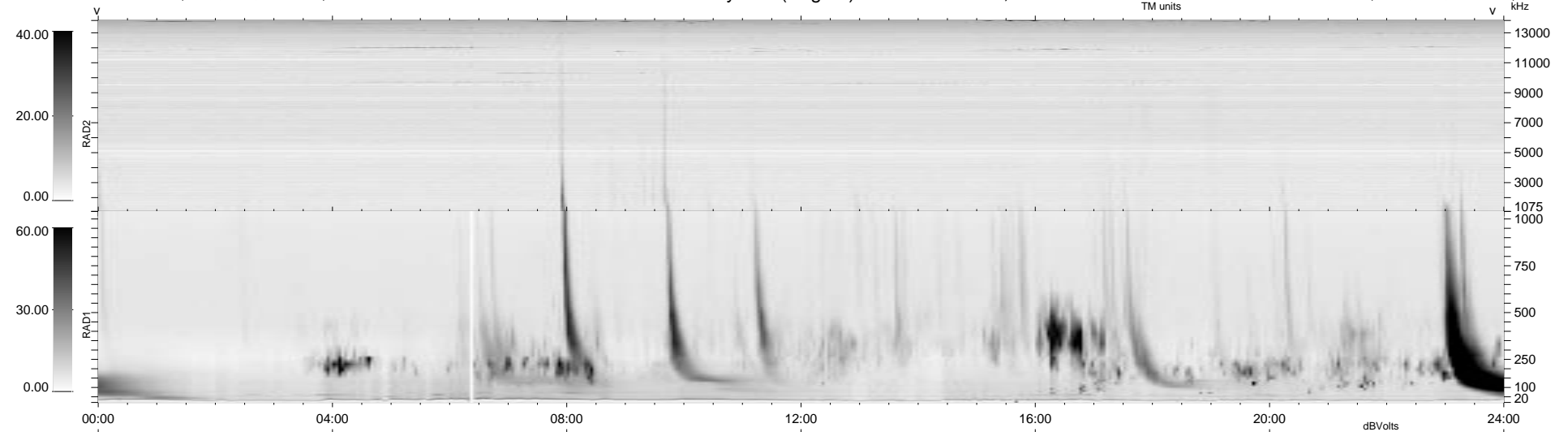


21 bad + 917 good MF/939MF projected (97%) - 1 missing MF  
 Avg interval = 180 secs  
 Re = 232.10 (231.09, 15.11, -15.40 GSE)

1.7d VMS-SunOS LZ version = v01  
 DAILY Tue Sep 16, 2008  
 Re = 232.57 (231.54, 14.47, -16.33 GSE)

### WIND/WAVES Summary Plot (Page 1) for 17-JAN-1998, DOY = 17



RAD2  
 Antenna Ey  
 Mode LIN(1)  
 SUM/SEP SUM  
 Toggle OFF

RAD1  
 Antenna Ex  
 Mode LIS(2,3)  
 SUM/SEP SUM  
 Toggle OFF

TNR  
 Antenna ExEy  
 Mode A-32  
 Sweep ABCDE