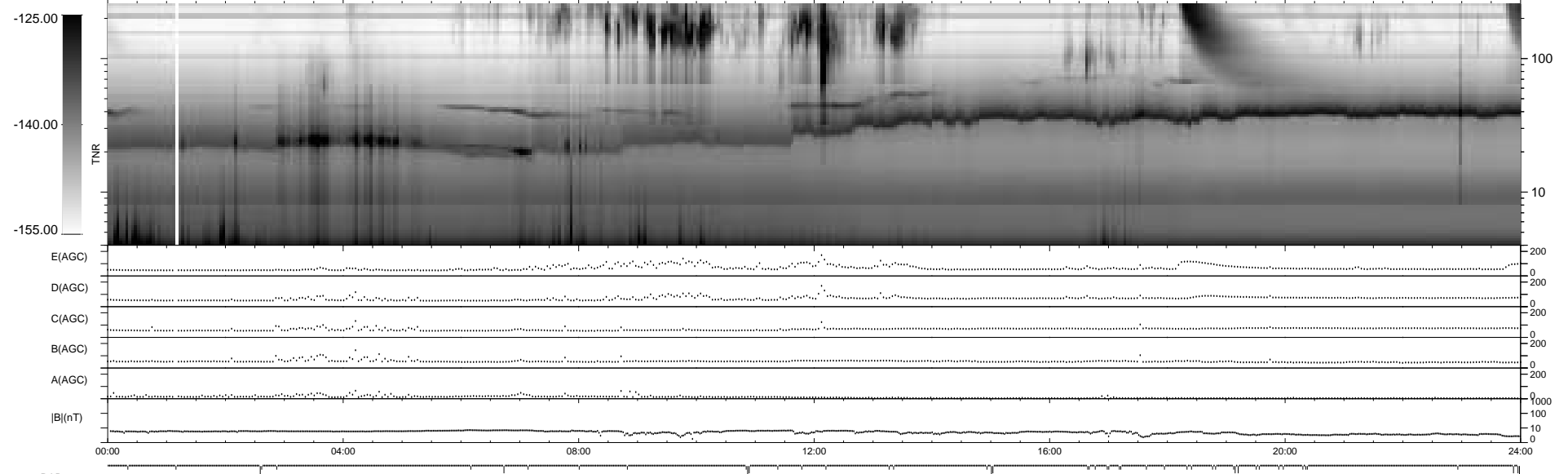
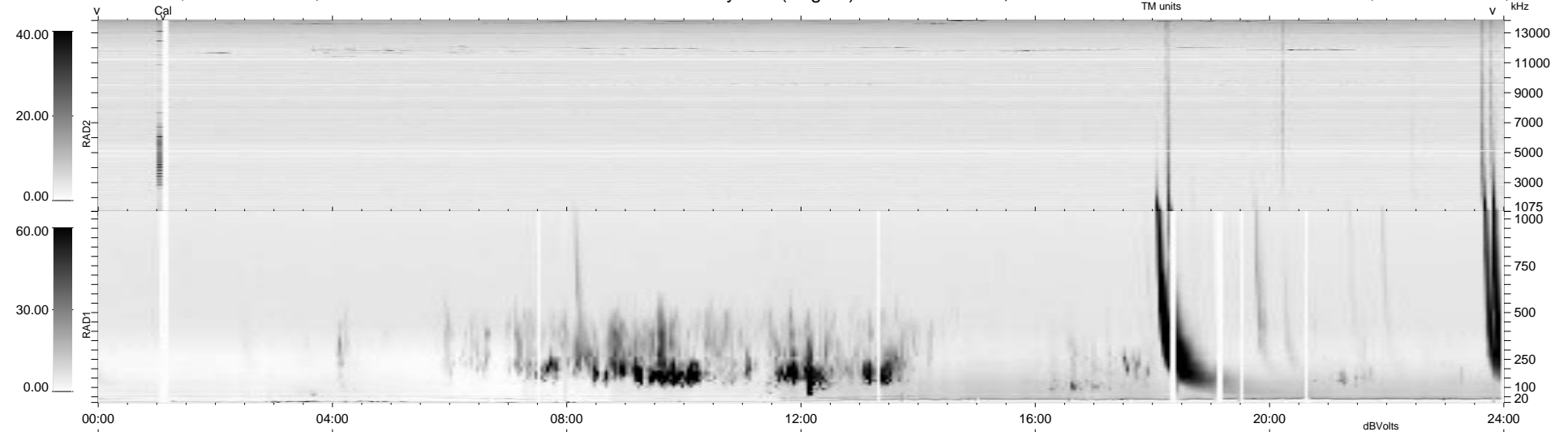


48 bad + 891 good MF/939MF projected (94%) - 0 missing MFs
 Avg interval = 180 secs
 Re = -229.19 (228.23, 19.18, -8.32 GSE)

1.7d VMS-SunOS LZ version = v01
 DAILY Tue Sep 16, 2008
 Re = 229.55 (228.59, 18.70, -9.37 GSE)

WIND/WAVES Summary Plot (Page 1) for 10-JAN-1998, DOY = 10



```

RAD2
Antenna Ey .....
Mode LIN(1) .....
SUM/SEP SUM .....
Toggle OFF .....

RAD1
Antenna Ex .....
Mode LIS(2.3) .....
SUM/SEP SUM .....
Toggle OFF .....

TNR
Antenna ExEy .....
Mode A-32 .....
Sweep ABCDE .....
  
```