

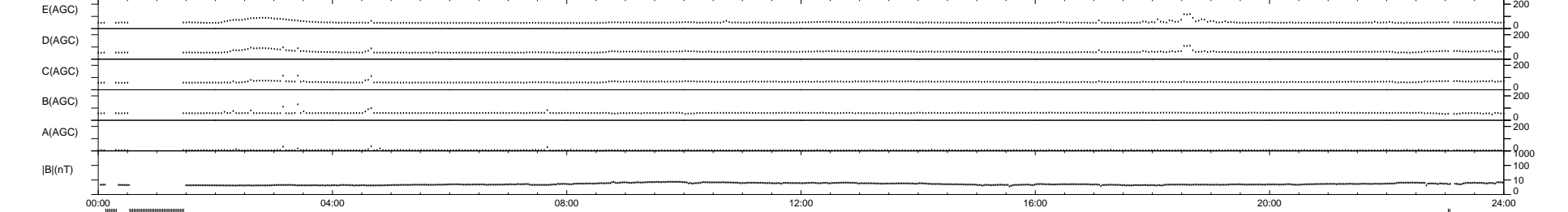
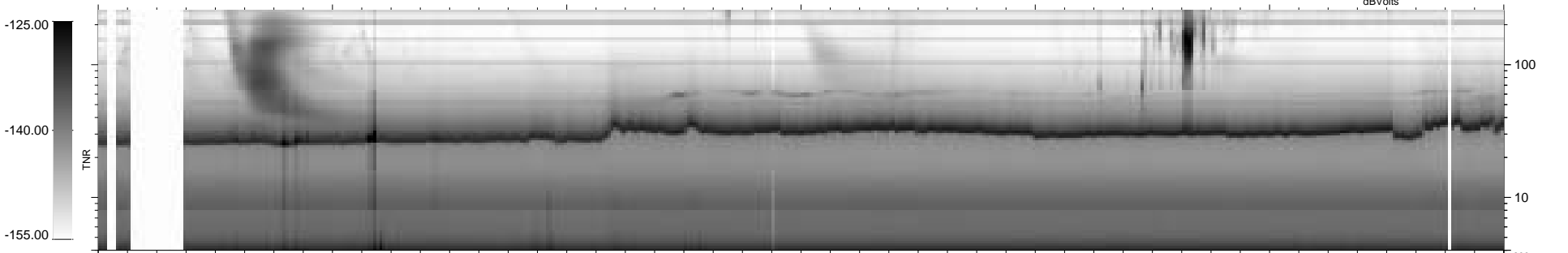
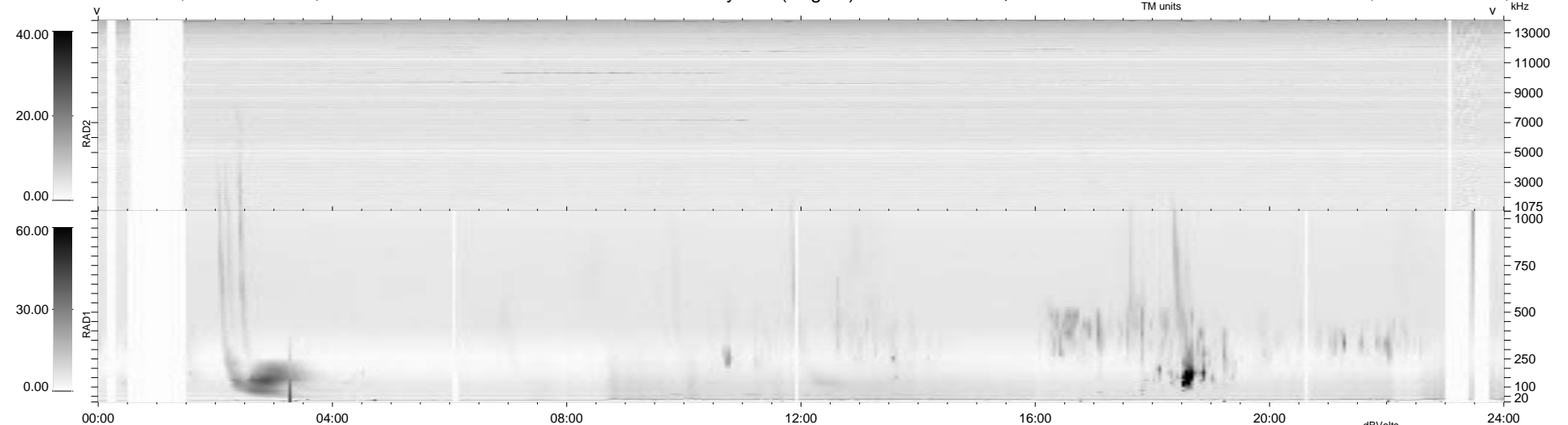
50 bad + 843 good MF/940MF projected (89%) - 47 missing MFs
 Avg interval = 180 secs
 Re = 227.49 (226.53, 20.71, -2.84 GSE)

1.7d VMS-SunOS

LZ version = v01

WIND/WAVES Summary Plot (Page 1) for 05-JAN-1998, DOY = 5

DAILY Tue Sep 16, 2008
 Re = 227.84 (226.88, 20.55, -3.94 GSE)



```

RAD2
Antenna Ey .....
Mode LIN(1) .....
SUM/SEP SUM .....
Toggle OFF .....

RAD1
Antenna Ex .....
Mode LIS(2,3) .....
SUM/SEP SUM .....
Toggle OFF .....

TNR
Antenna ExEy .....
Mode A-32 .....
Sweep ABCDE .....
  
```