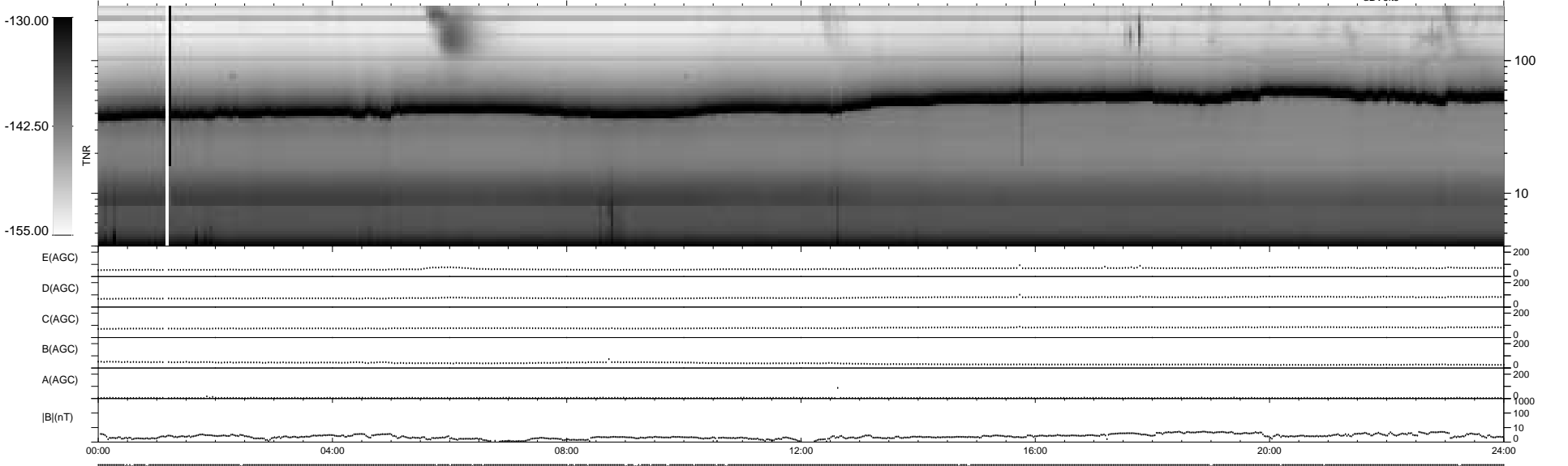
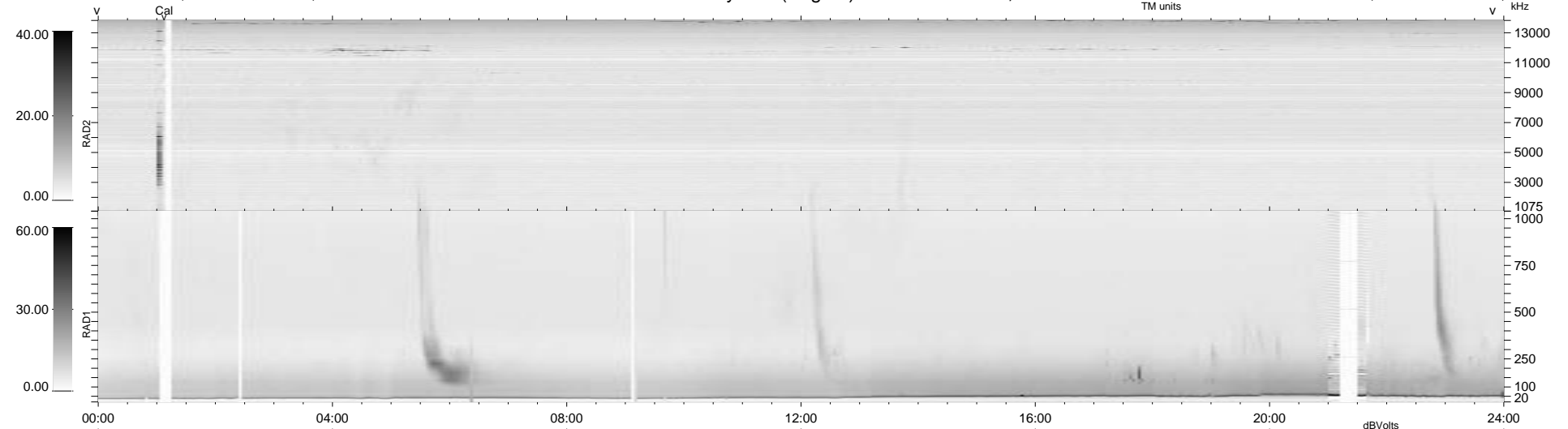


37 bad + 903 good MF/940MF projected (96%) - 0 missing MFs
 Avg interval = 180 secs
 Re = 223.46 (222.50, 19.71, 6.08 GSE)

1.7d VMS-SunOS LZ version = v01
 DAILY Tue Sep 23, 2008
 Re = 224.12 (223.16, 20.02, 5.00 GSE)

WIND/WAVES Summary Plot (Page 1) for 28-DEC-1997, DOY = 362



```

RAD2
Antenna Ey
Mode LIN(1)
SUM/SEP SUM
Toggle OFF

RAD1
Antenna Ex
Mode LIS(2,3)
SUM/SEP SUM
Toggle OFF

TNR
Antenna ExEy
Mode A-32
Sweep ABCDE
  
```