

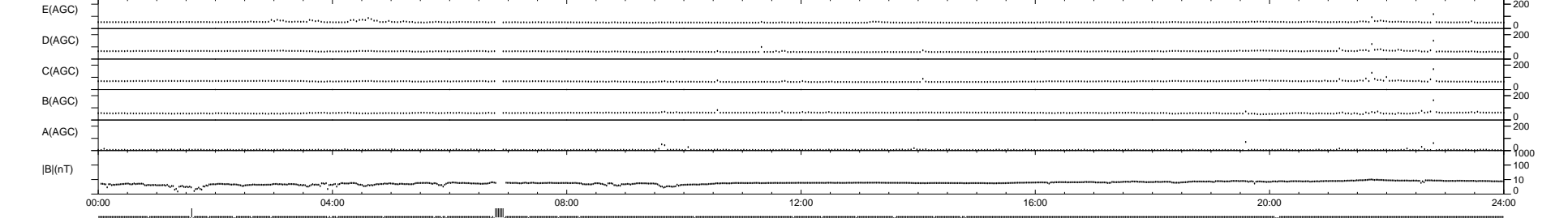
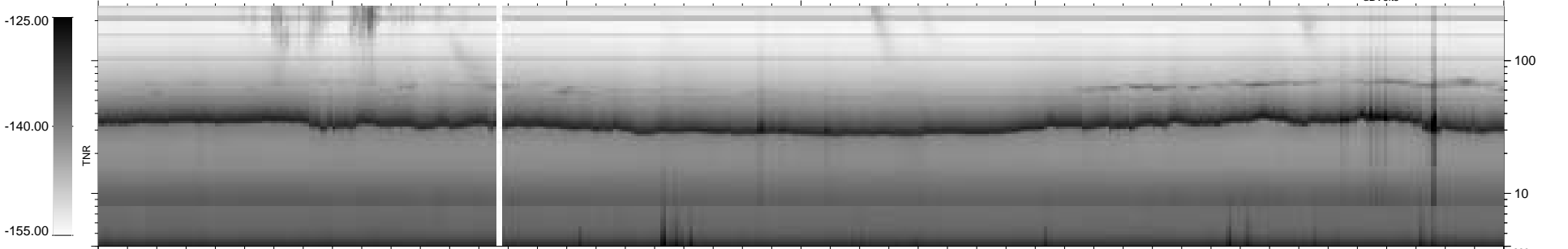
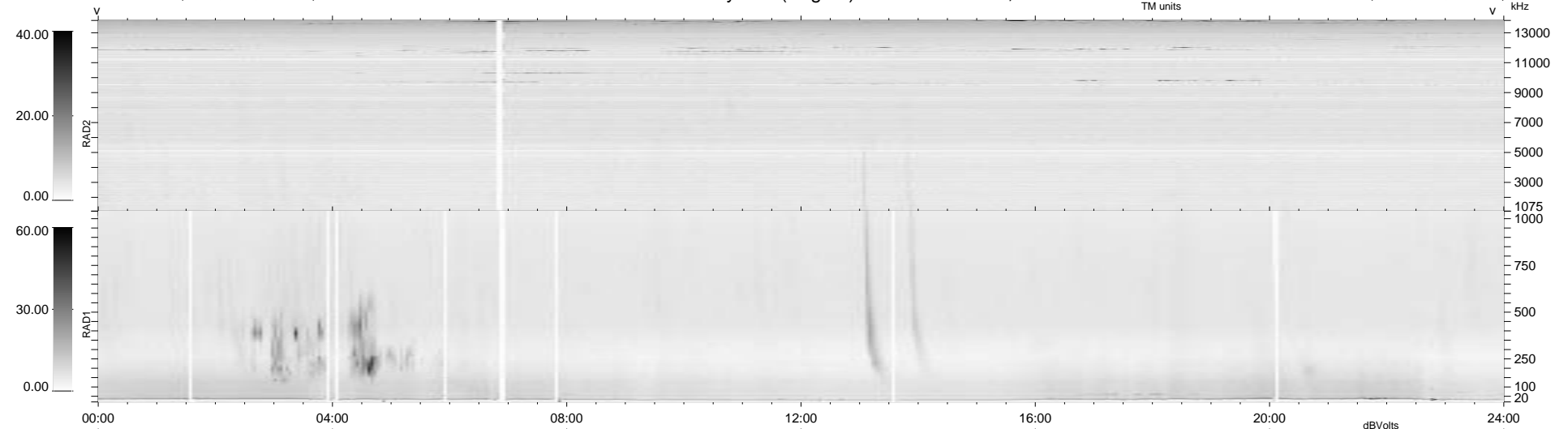
33 bad + 899 good MF/939MF projected (95%) - 7 missing MFs
 Avg interval = 180 secs
 Re = 221.22 (220.24, 18.63, 9.29 GSE)

1.7d VMS-SunOS

LZ version = v01

WIND/WAVES Summary Plot (Page 1) for 25-DEC-1997, DOY = 359

DAILY Tue Sep 23, 2008
 Re = 222.00 (221.03, 19.01, 8.24 GSE)



RAD2
 Antenna Ey
 Mode LIN(1)
 SUM/SEP SUM
 Toggle OFF

RAD1
 Antenna Ex
 Mode LIS(2,3)
 SUM/SEP SUM
 Toggle OFF

TNR
 Antenna ExEy
 Mode A-32
 Sweep ABCDE