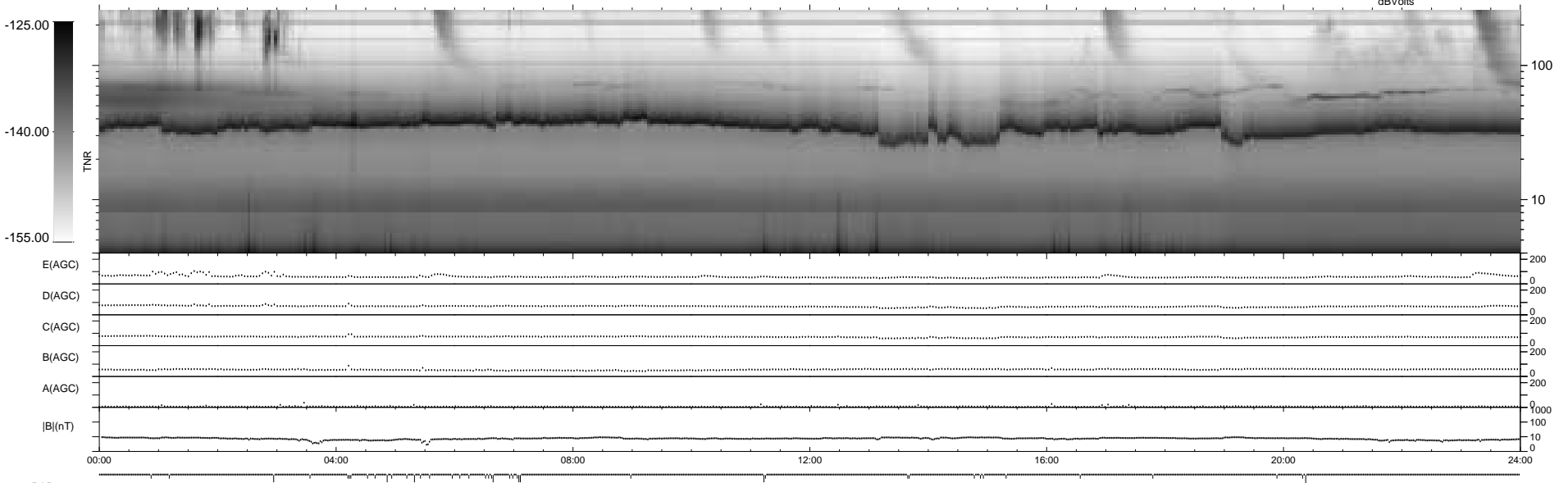
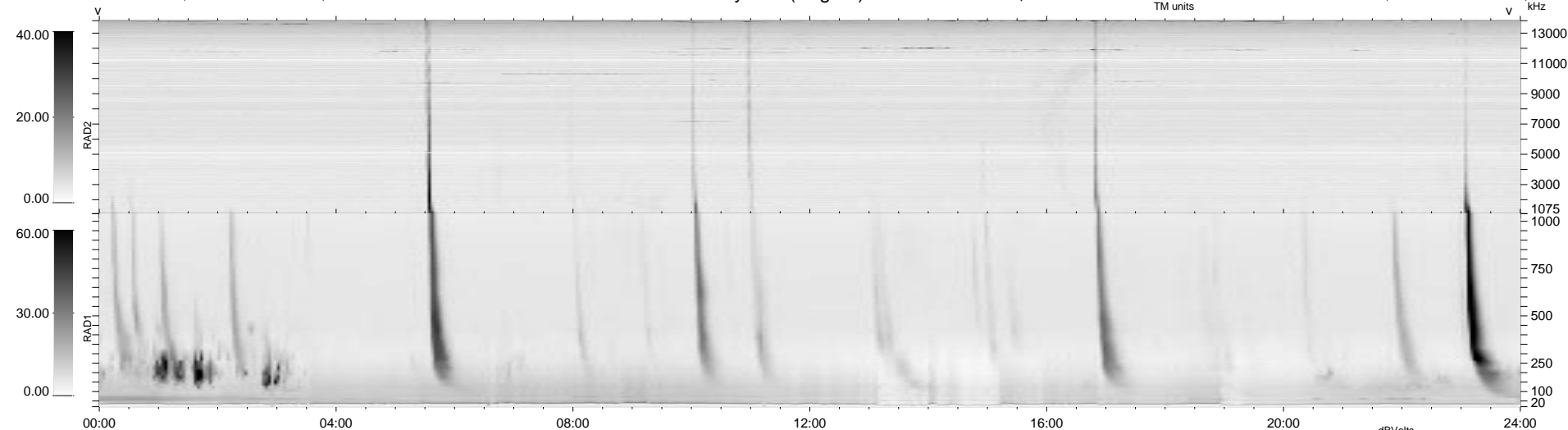


41 bad + 898 good MF/939MF projected (95%) - 0 missing MFs
 Avg interval = 180 secs
 Re = 216.06 (214.93, 15.90, 15.26 GSE)

1.7d VMS-SunOS LZ version = v01
 DAILY Tue Sep 23, 2008
 Re = 216.94 (215.85, 16.40, 14.32 GSE)

WIND/WAVES Summary Plot (Page 1) for 19-DEC-1997, DOY = 353



RAD2
 Antenna Ey
 Mode LIN(1)
 SUM/SEP SUM
 Toggle OFF

RAD1
 Antenna Ex
 Mode LIS(2,3)
 SUM/SEP SUM
 Toggle OFF

TNR
 Antenna ExEy
 Mode A-32
 Sweep ABCDE