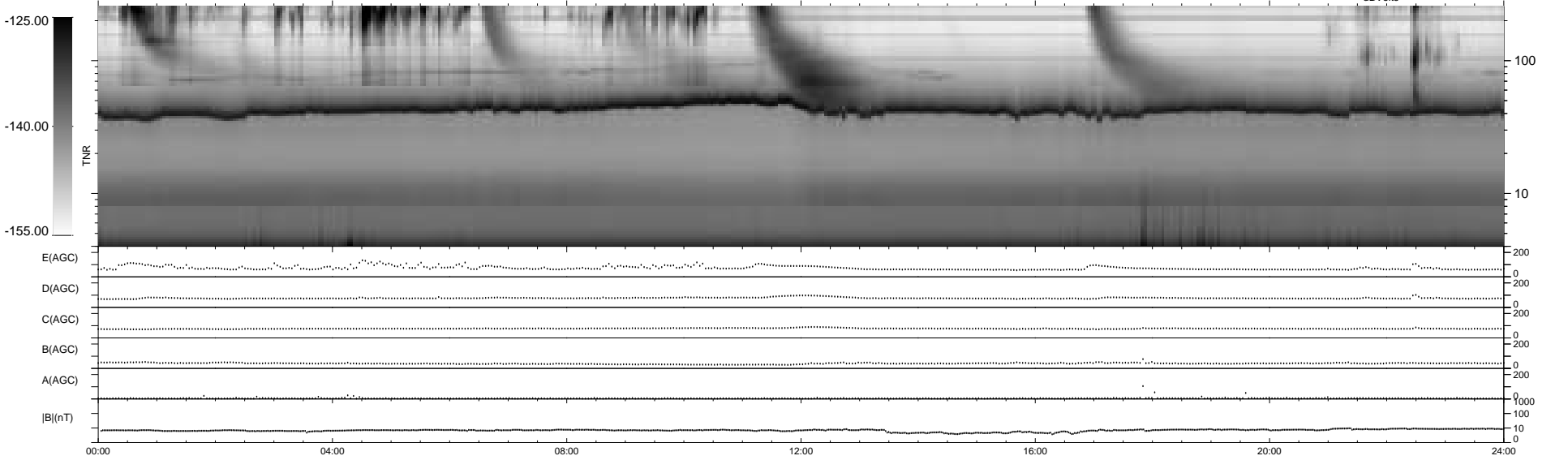
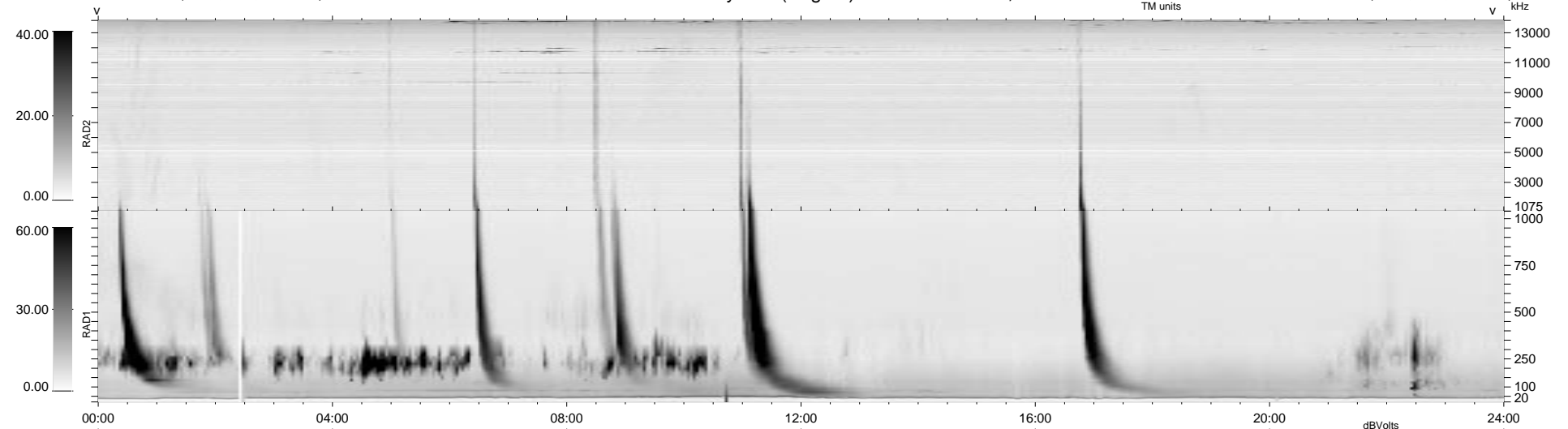


12 bad + 927 good MF/939MF projected (98%) - 0 missing MFs  
 Avg interval = 180 secs  
 Re = 214.26 (213.06, 14.83, 17.09 GSE)

1.7d VMS-SunOS LZ version = v01  
 DAILY Tue Sep 23, 2008  
 Re = 215.15 (213.99, 15.37, 16.19 GSE)

WIND/WAVES Summary Plot (Page 1) for 17-DEC-1997, DOY = 351



RAD2  
 Antenna Ey .....  
 Mode LIN(1) .....  
 SUM/SEP SUM .....  
 Toggle OFF .....  
 RAD1  
 Antenna Ex .....  
 Mode LIS(2,3) .....  
 SUM/SEP SUM .....  
 Toggle OFF .....  
 TNR  
 Antenna ExEy .....  
 Mode A-32 .....  
 Sweep ABCDE .....