

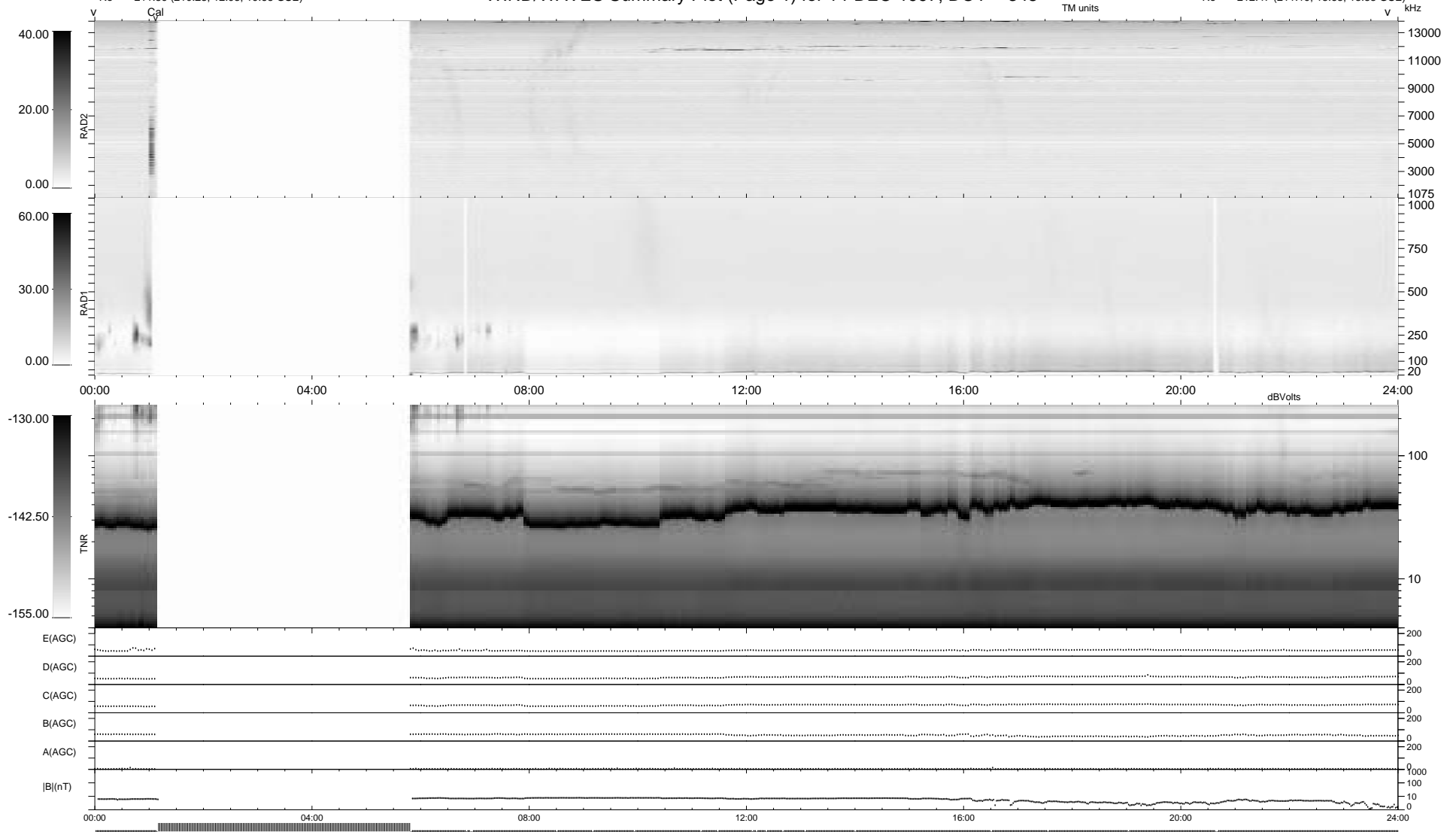
21 bad + 736 good MF/939MF projected (78%) - 182 missing MFs
 Avg interval = 180 secs
 Re = 211.59 (210.28, 12.98, 19.65 GSE)

1.7d VMS-SunOS

LZ version = v01

WIND/WAVES Summary Plot (Page 1) for 14-DEC-1997, DOY = 348

DAILY Tue Sep 23, 2008
 Re = 212.47 (211.19, 13.63, 18.83 GSE)



RAD2
 Antenna Ey
 Mode LIN(1)
 SUM/SEP SUM
 Toggle OFF
 RAD1
 Antenna Ex
 Mode LIS(2,3)
 SUM/SEP SUM
 Toggle OFF
 TNR
 Antenna ExEy
 Mode A-32
 Sweep ABCDE