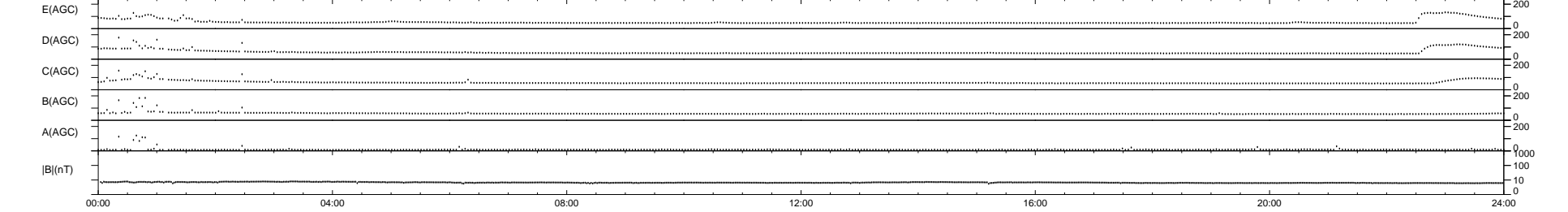
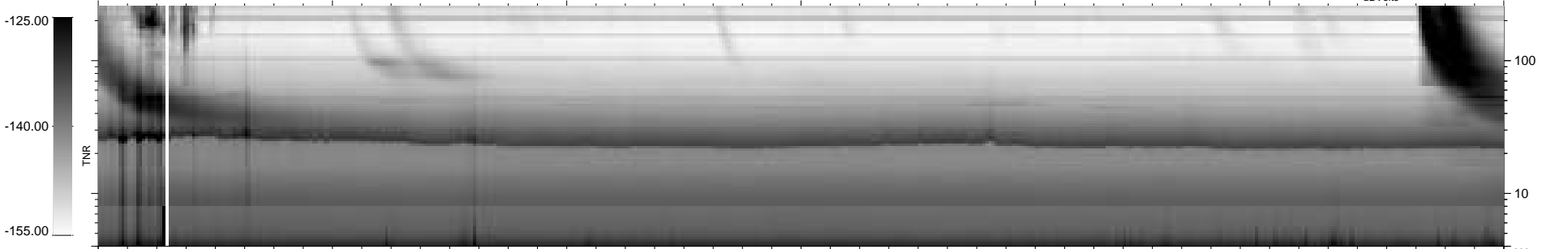
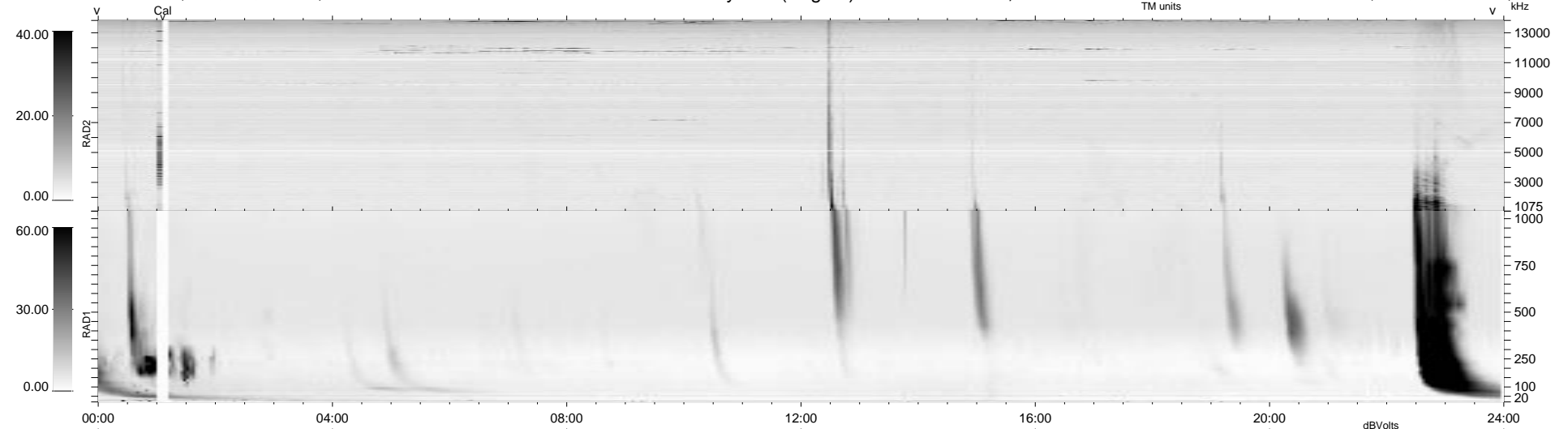


19 bad + 920 good MF/939MF projected (97%) - 0 missing MFs
 Avg interval = 180 secs
 Re = 209.85 (208.45, 11.51, 21.23 GSE)

1.7d VMS-SunOS LZ version = v01
 DAILY Tue Sep 23, 2008
 Re = 210.71 (209.36, 12.27, 20.46 GSE)

WIND/WAVES Summary Plot (Page 1) for 12-DEC-1997, DOY = 346



RAD2
 Antenna Ey
 Mode LIN(1)
 SUM/SEP SUM
 Toggle OFF

RAD1
 Antenna Ex
 Mode LIS(2,3)
 SUM/SEP SUM
 Toggle OFF

TNR
 Antenna ExEy
 Mode A-32
 Sweep ABCDE