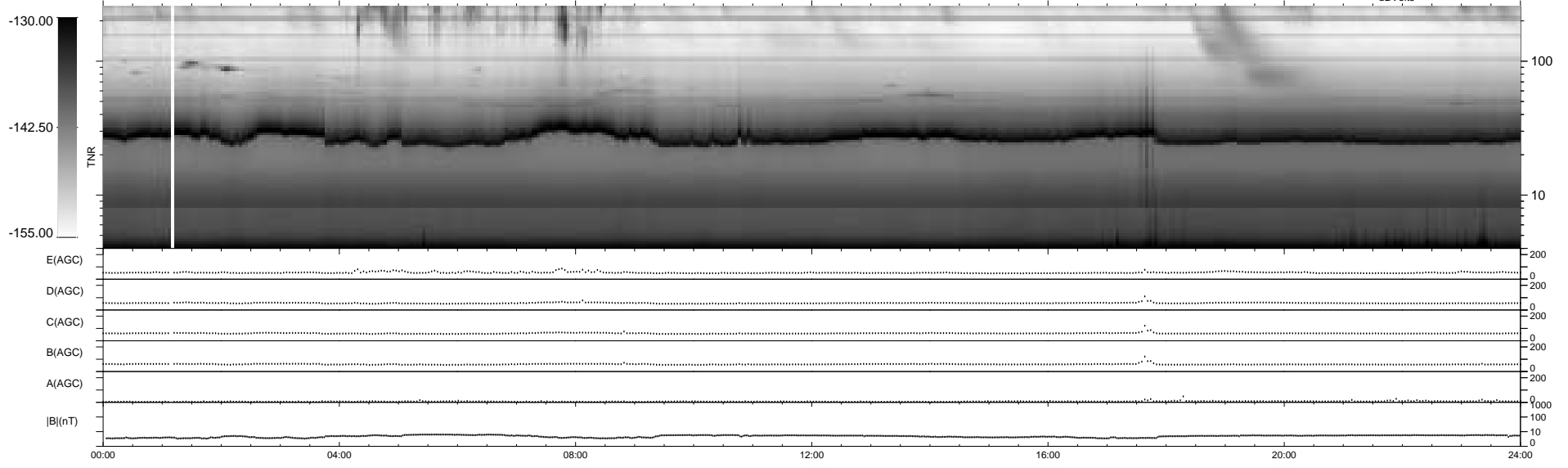
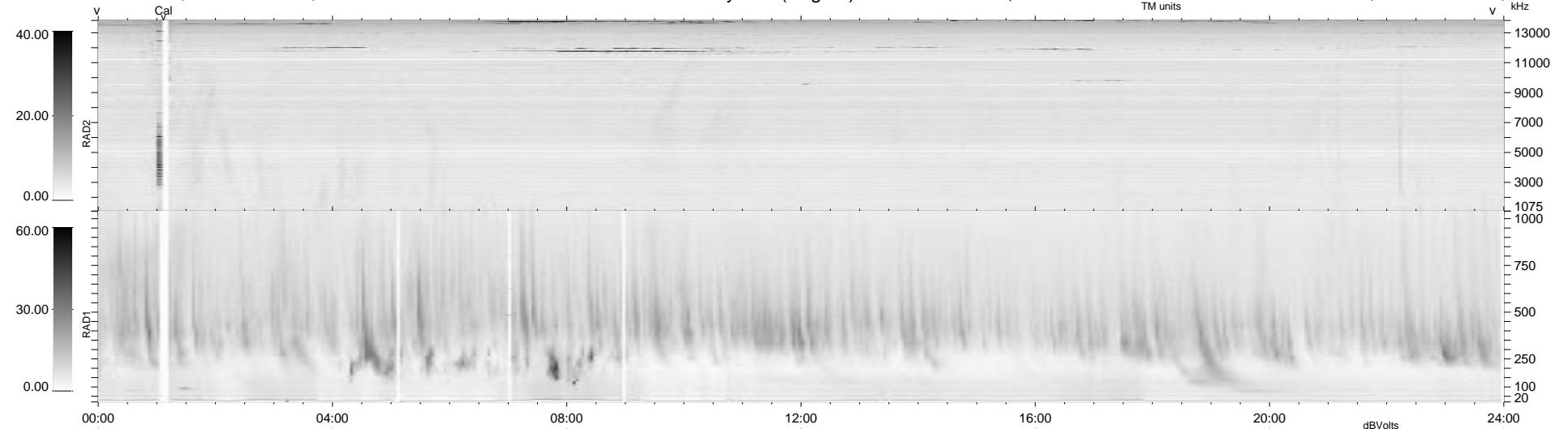


26 bad + 913 good MF/939MF projected (97%) - 0 missing MFs
Avg interval = 180 secs
Re = 206.30 (204.75, 7.73, 24.01 GSE)

1.7d VMS-SunOS LZ version = v01
DAILY Tue Sep 23, 2008
Re = 207.20 (205.69, 8.79, 23.37 GSE)

WIND/WAVES Summary Plot (Page 1) for 08-DEC-1997, DOY = 342



RAD2
Antenna Ey
Mode LIN(1)
SUM/SEP SUM
Toggle OFF

RAD1
Antenna Ex
Mode LIS(2,3)
SUM/SEP SUM
Toggle OFF

TNR
Antenna ExEy
Mode A-32
Sweep ABCDE