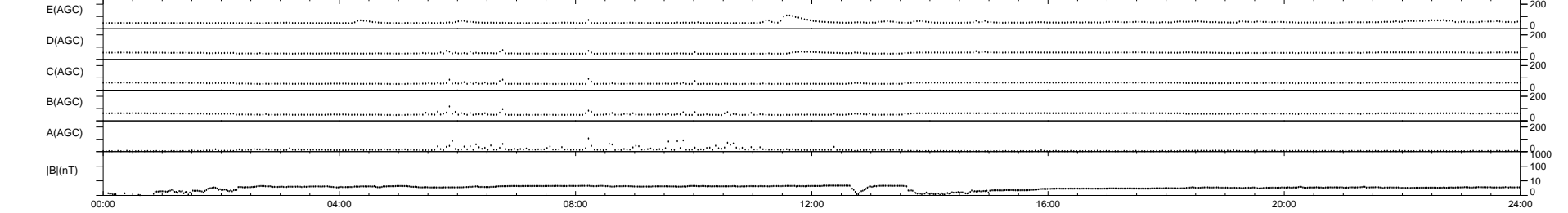
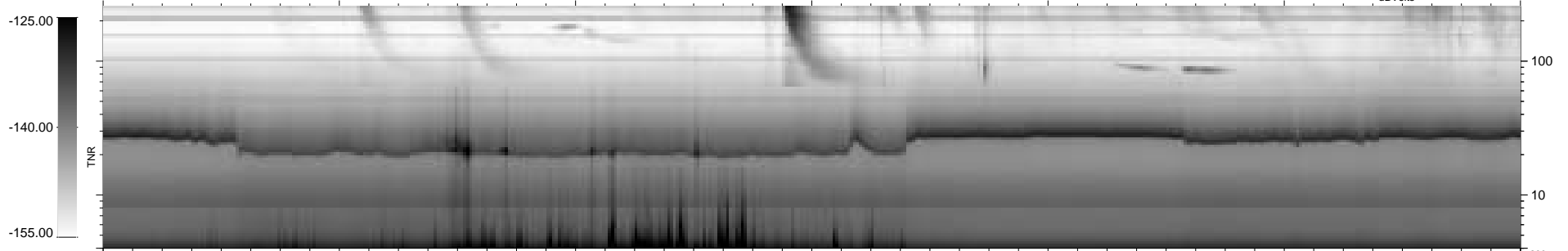
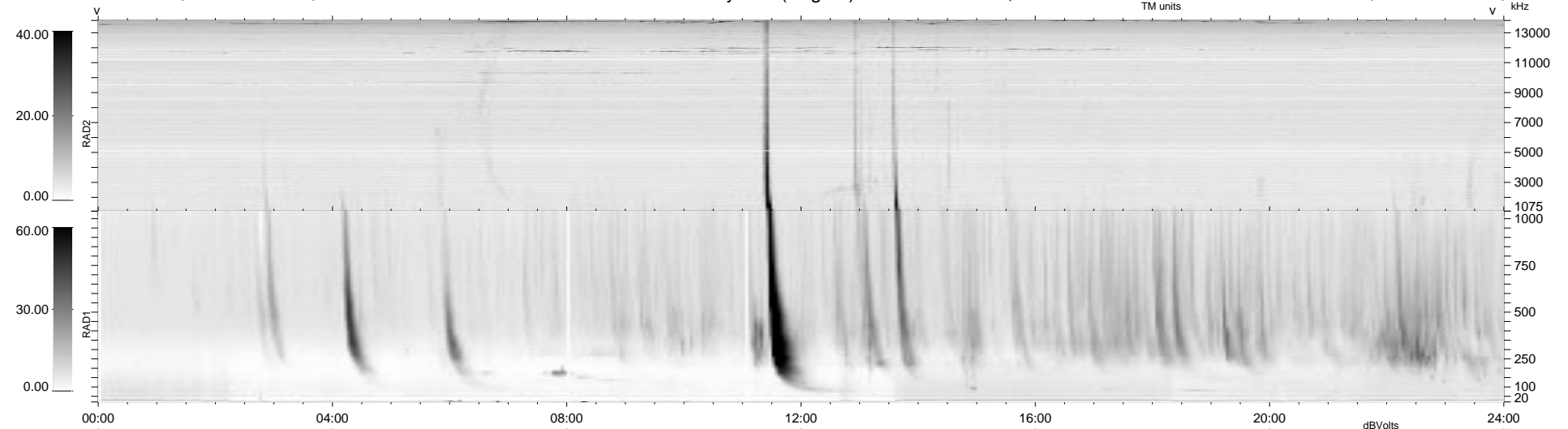


83 bad + 856 good MF/939MF projected (91%) - 0 missing MFs
 Avg interval = 180 secs
 Re = - 205.35 (203.77, 6.57, 24.61 GSE)

1.7d VMS-SunOS LZ version = v01
 DAILY Tue Sep 23, 2008
 Re = 206.29 (204.74, 7.72, 24.02 GSE)

WIND/WAVES Summary Plot (Page 1) for 07-DEC-1997, DOY = 341



```

RAD2
Antenna Ey .....
Mode LIN(1) .....
SUM/SEP SUM .....
Toggle OFF .....

RAD1
Antenna .....
Mode .....
SUM/SEP .....
Toggle .....

TNR
Antenna ExEy .....
Mode A-32 .....
Sweep ABCDE .....
  
```