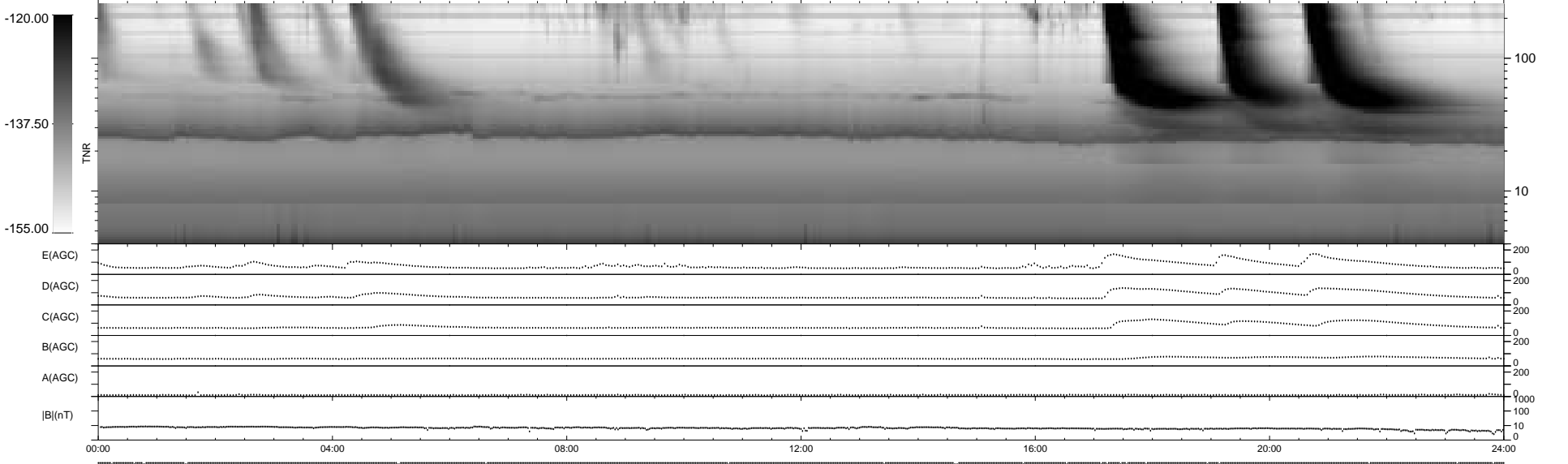
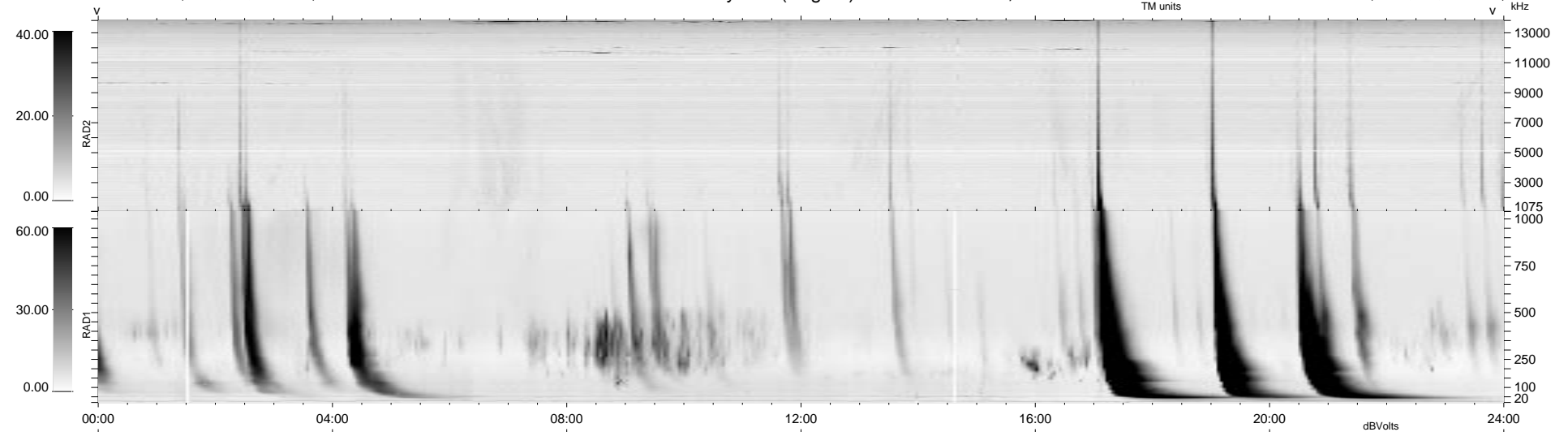


26 bad + 914 good MF/940MF projected (97%) - 0 missing MFs  
 Avg interval = 180 secs  
 Re = 203.34 (201.67, 4.01, 25.70 GSE)

1.7d VMS-SunOS LZ version = v01  
 DAILY Tue Sep 23, 2008  
 Re = 204.37 (202.74, 5.33, 25.18 GSE)

WIND/WAVES Summary Plot (Page 1) for 05-DEC-1997, DOY = 339



E(AGC) .....  
 D(AGC) .....  
 C(AGC) .....  
 B(AGC) .....  
 A(AGC) .....  
 |B|(nT) .....

RAD2  
 Antenna Ey .....  
 Mode LIN(1) .....  
 SUM/SEP SUM .....  
 Toggle OFF .....

RAD1  
 Antenna Ex .....  
 Mode LIS(2,3) .....  
 SUM/SEP SUM .....  
 Toggle OFF .....

TNR  
 Antenna ExEy .....  
 Mode A-32 .....  
 Sweep ABCDE .....