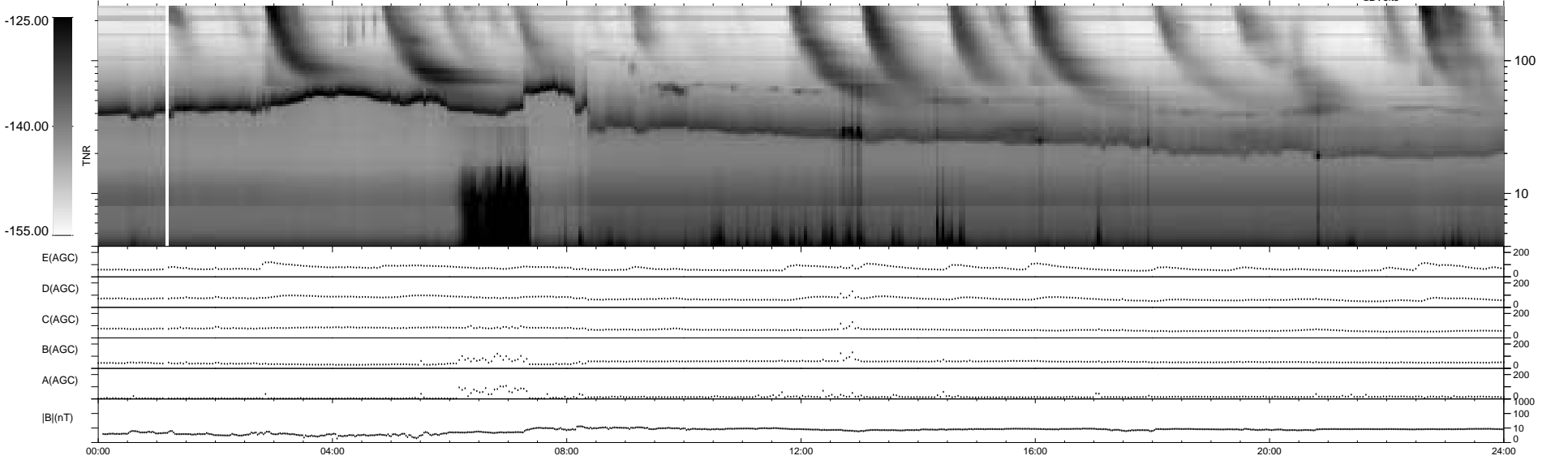
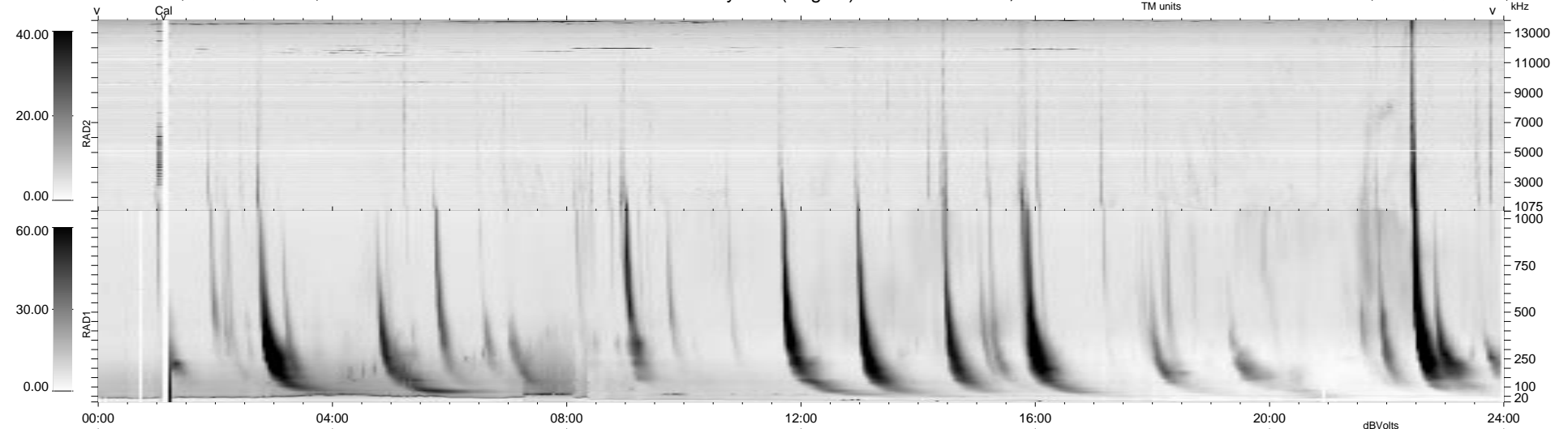


21 bad + 918 good MF/939MF projected (97%) - 0 missing MFs
 Avg interval = 180 secs
 Re = 197.20 (195.23, -3.67, 27.57 GSE)

1.7d VMS-SunOS LZ version = v01
 DAILY Tue Sep 23, 2008
 Re = 198.57 (196.67, -2.02, 27.30 GSE)

WIND/WAVES Summary Plot (Page 1) for 30-NOV-1997, DOY = 334



RAD2
 Antenna Ey
 Mode LIN(1)
 SUM/SEP SUM
 Toggle OFF

RAD1
 Antenna Ex
 Mode LIS(2,3)
 SUM/SEP SUM
 Toggle OFF

TNR
 Antenna ExEy
 Mode A-32
 Sweep ABCDE