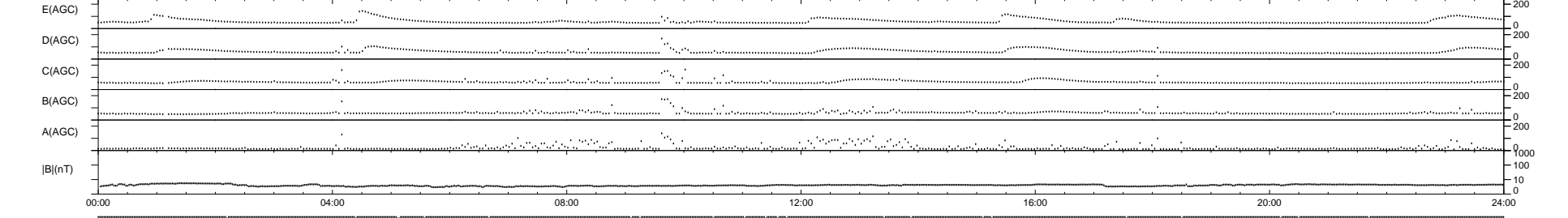
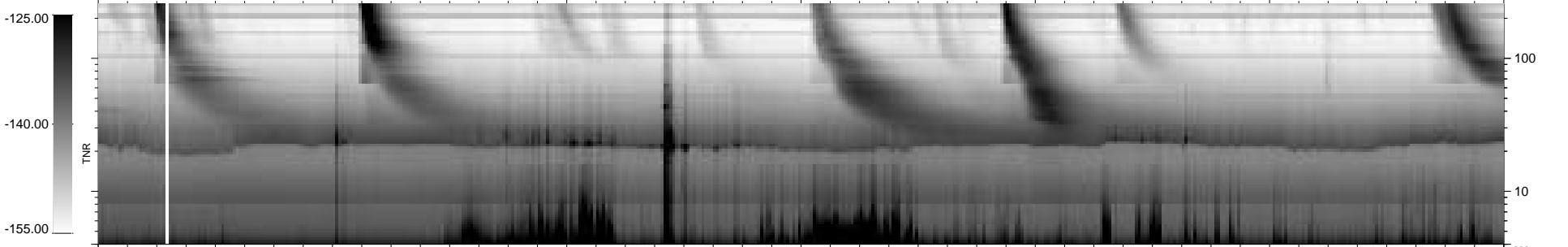
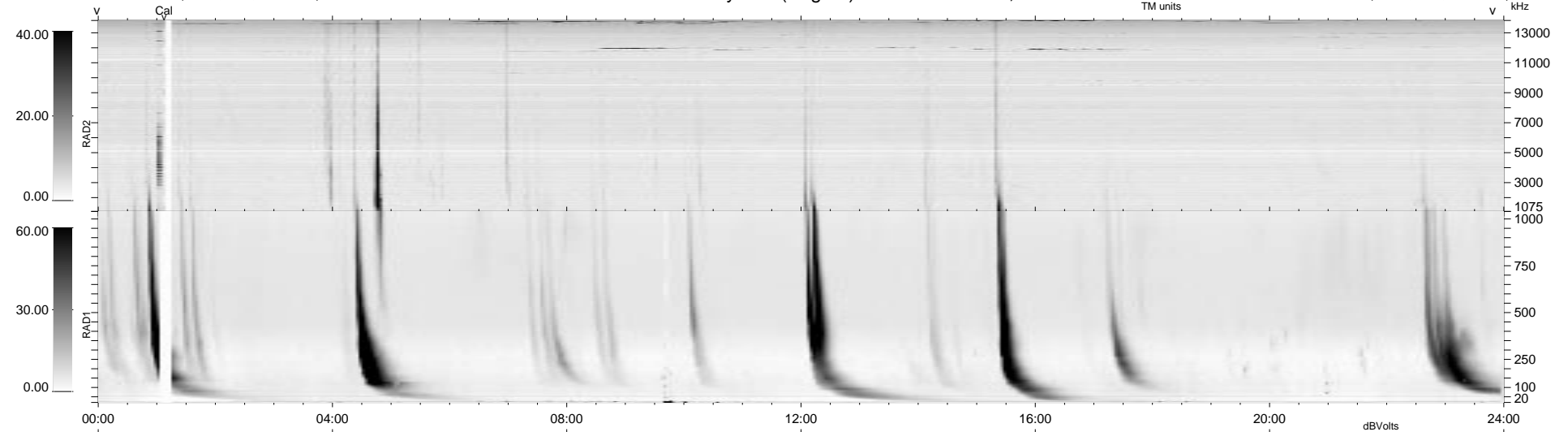


22 bad + 918 good MF/940MF projected (97%) - 0 missing MFs  
 Avg interval = 180 secs  
 Re = 194.18 (192.02, -7.13, 27.95 GSE)

1.7d VMS-SunOS LZ version = v01  
 DAILY Tue Sep 23, 2008  
 Re = 195.72 (193.66, -5.39, 27.79 GSE)

### WIND/WAVES Summary Plot (Page 1) for 28-NOV-1997, DOY = 332



```

RAD2
Antenna Ey .....
Mode LIN(1) .....
SUM/SEP SUM .....
Toggle OFF .....

RAD1
Antenna Ex .....
Mode LIS(2,3) .....
SUM/SEP SUM .....
Toggle OFF .....

TNR
Antenna ExEy .....
Mode A-32 .....
Sweep ABCDE .....
  
```