

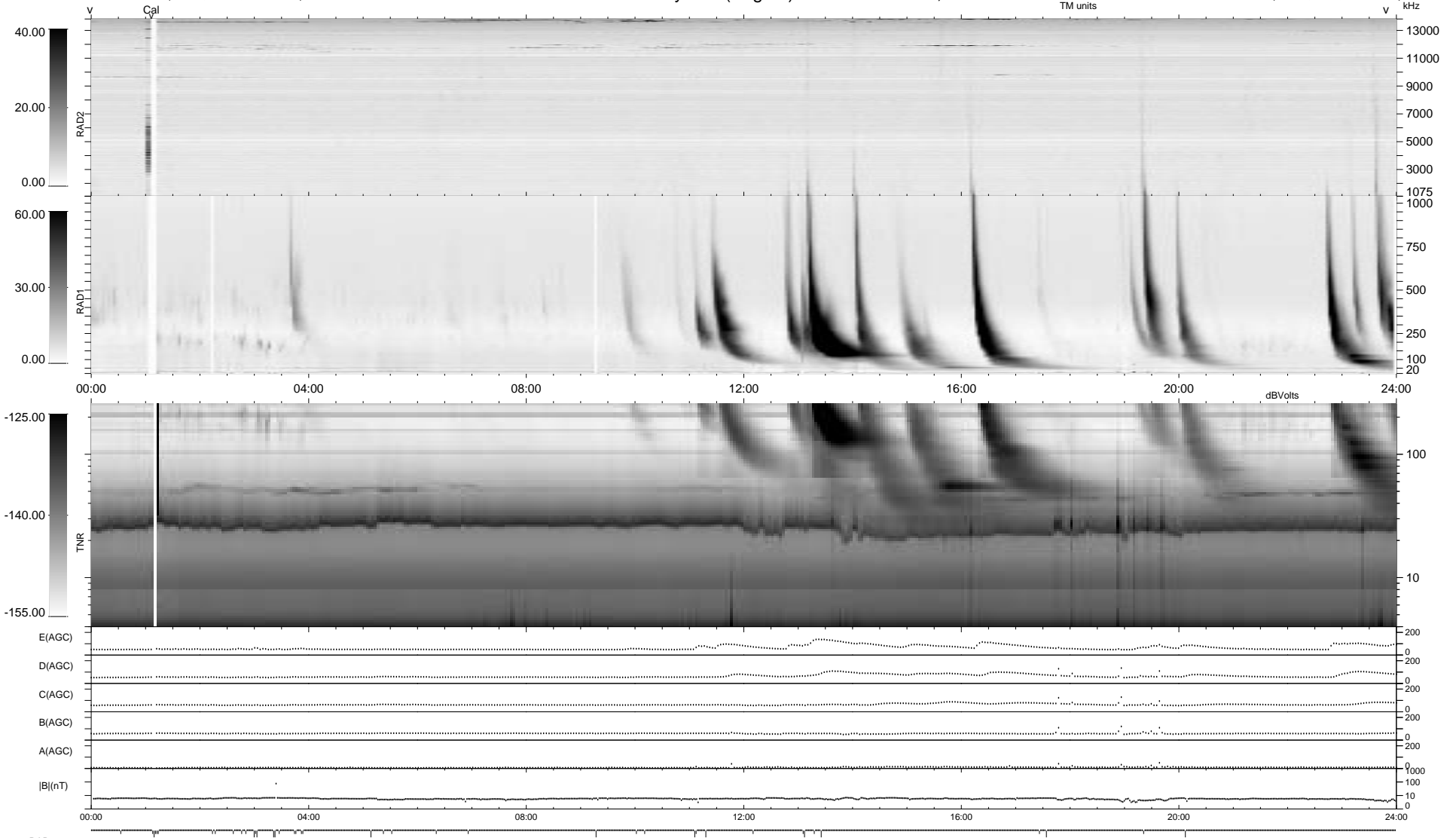
41 bad + 898 good MF/939MF projected (95%) - 0 missing MFs  
 Avg interval = 180 secs  
 Re = 190.82 (188.43, -10.73, 28.11 GSE)

1.7d VMS-SunOS

LZ version = v01

WIND/WAVES Summary Plot (Page 1) for 26-NOV-1997, DOY = 330

DAILY Tue Sep 23, 2008  
 Re = 192.53 (190.26, -8.93, 28.06 GSE)



RAD2  
 Antenna Ey  
 Mode LIN(1)  
 SUM/SEP SUM  
 Toggle OFF

RAD1  
 Antenna Ex  
 Mode LIS(2,3)  
 SUM/SEP SUM  
 Toggle OFF

TNR  
 Antenna ExEy  
 Mode A-32  
 Sweep ABCDE