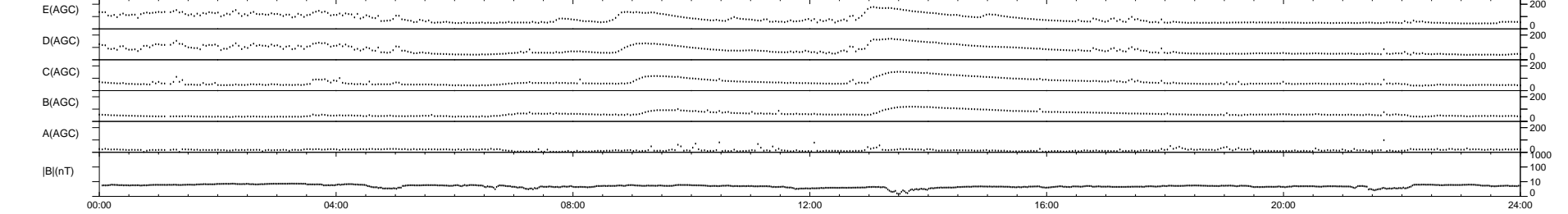
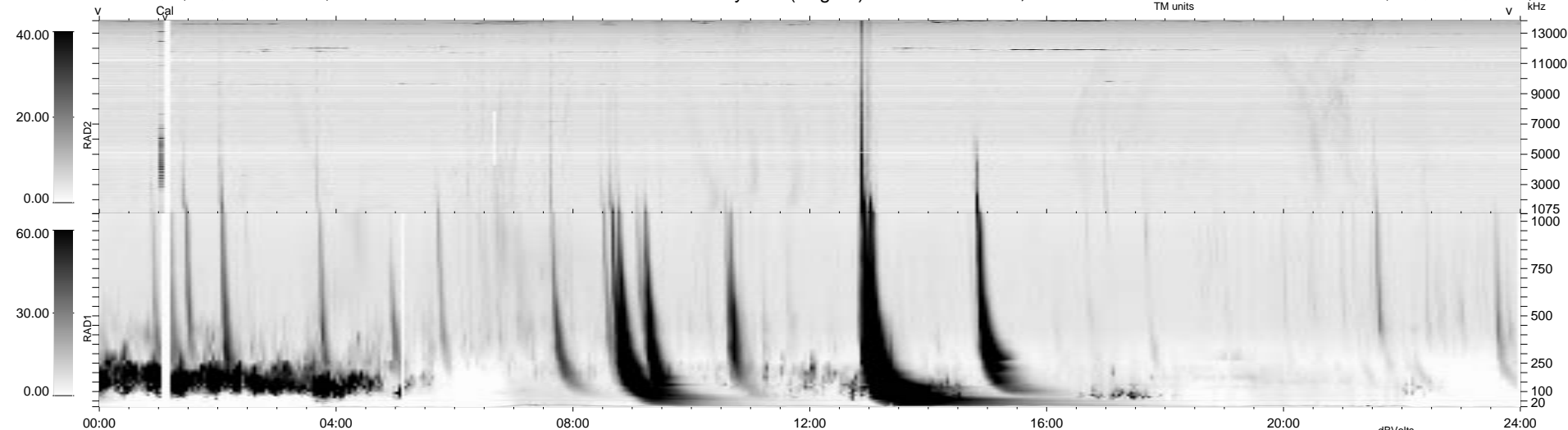


43 bad + 896 good MF/939MF projected (95%) - 0 missing MFs  
 Avg interval = 180 secs  
 Re = - 187.11 (184.43, -14.44, 28.03 GSE)

1.7d VMS-SunOS LZ version = v01  
 DAILY Tue Sep 23, 2008  
 Re = 188.99 (186.47, -12.59, 28.10 GSE)

WIND/WAVES Summary Plot (Page 1) for 24-NOV-1997, DOY = 328



RAD2  
 Antenna Ey  
 Mode LIN(1)  
 SUM/SEP SUM  
 Toggle OFF

RAD1  
 Antenna Ex  
 Mode LIS(2,3)  
 SUM/SEP SUM  
 Toggle OFF

TNR  
 Antenna ExEy  
 Mode A-32  
 Sweep ABCDE