

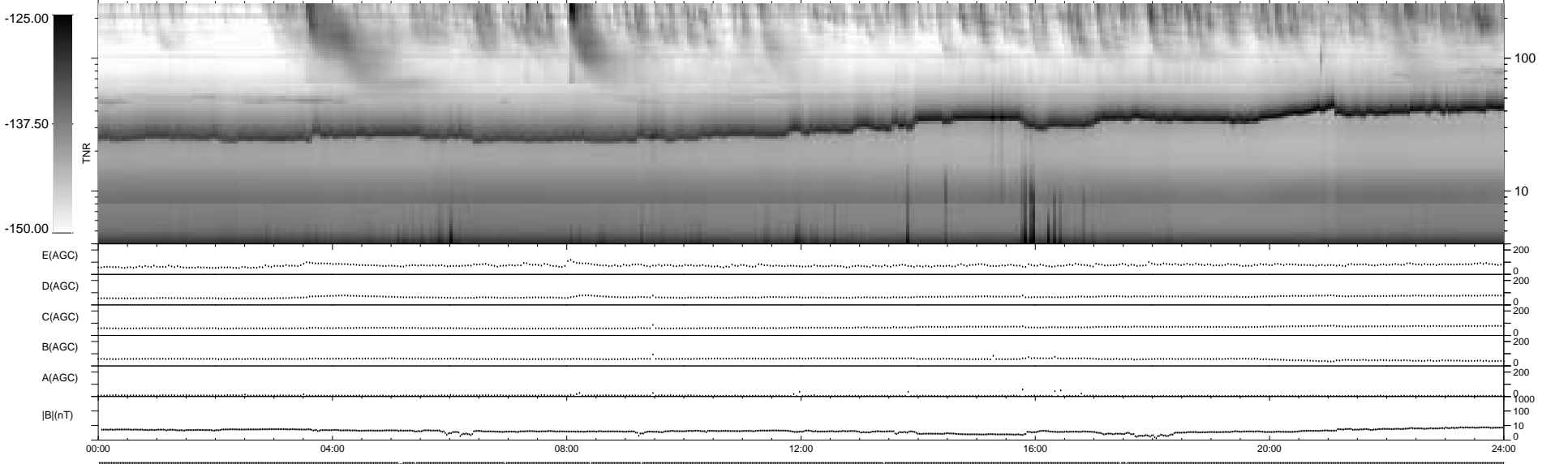
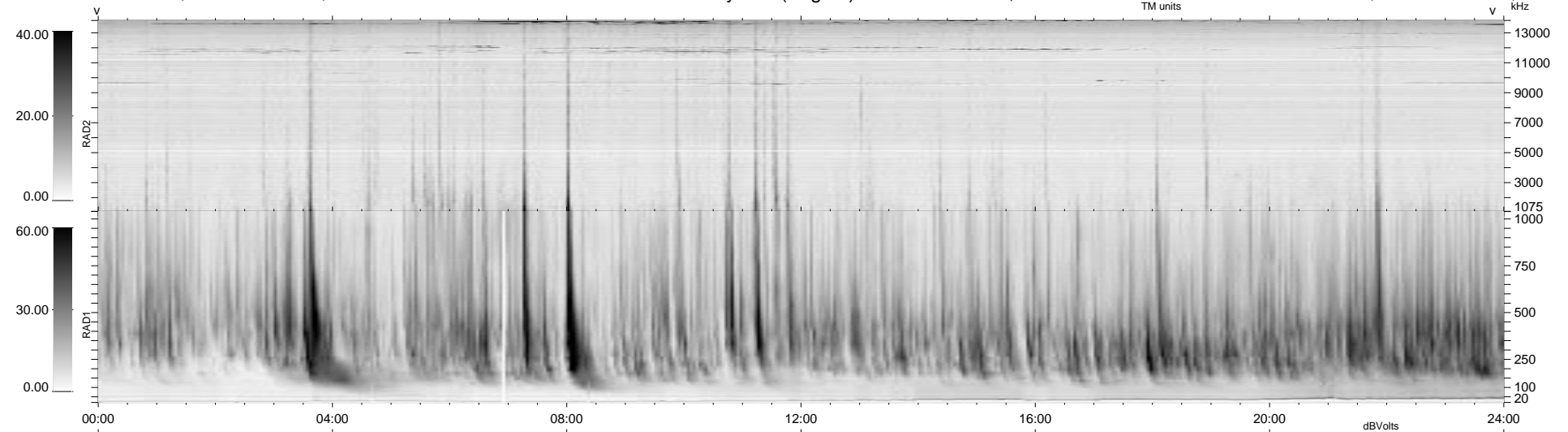
10 bad + 929 good MF/939MF projected (98%) - 0 missing MFs
Avg interval = 180 secs
Re = 180.90 (177.67, -20.15, 27.47 GSE)

1.7d VMS-SunOS

LZ version = v01

WIND/WAVES Summary Plot (Page 1) for 21-NOV-1997, DOY = 325

DAILY Tue Sep 23, 2008
Re = 183.04 (180.01, -18.24, 27.72 GSE)



RAD2
Antenna Ey
Mode LIN(1)
SUM/SEP SUM
Toggle OFF
RAD1
Antenna Ex
Mode LIS(2,3)
SUM/SEP SUM
Toggle OFF
TNR
Antenna ExEy
Mode A-32
Sweep ABCDE