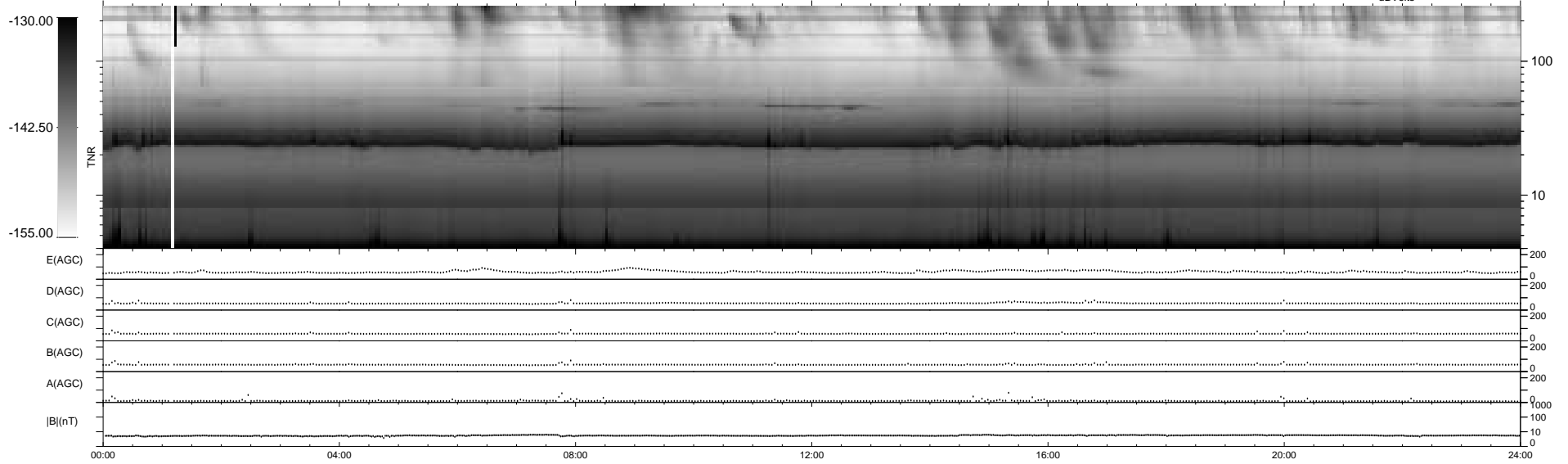
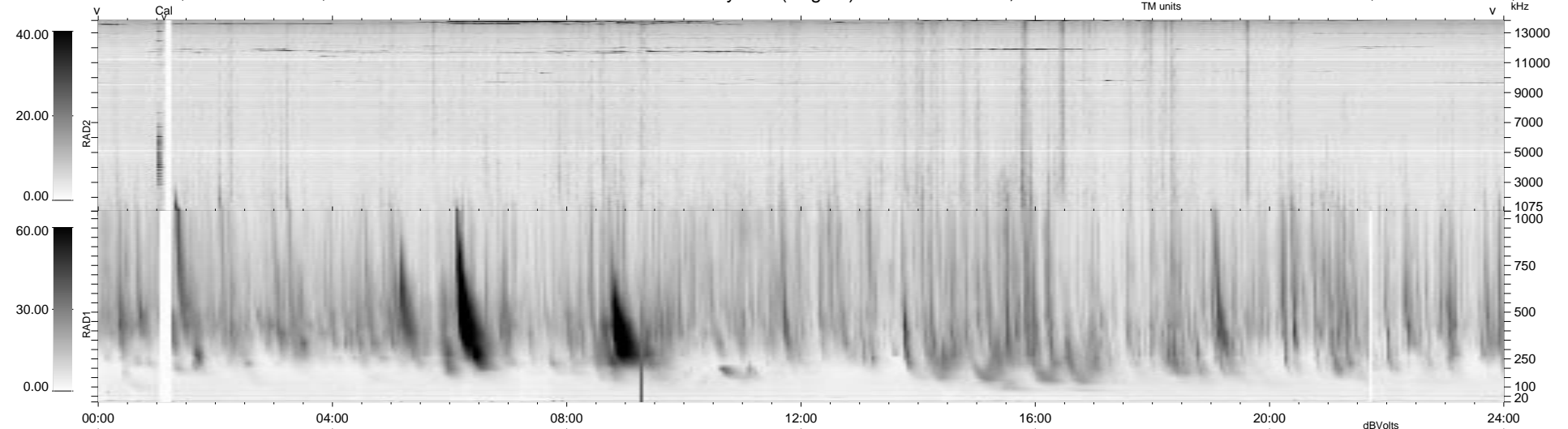


29 bad + 911 good MF/940MF projected (96%) - 0 missing MFs
 Avg interval = 180 secs
 Re = 178.66 (175.20, -22.07, 27.16 GSE)

1.7d VMS-SunOS LZ version = v01
 DAILY Tue Sep 23, 2008
 Re = 180.89 (177.65, -20.16, 27.47 GSE)

WIND/WAVES Summary Plot (Page 1) for 20-NOV-1997, DOY = 324



RAD2
 Antenna Ey
 Mode LIN(1)
 SUM/SEP SUM
 Toggle OFF
 RAD1
 Antenna Ex
 Mode LIS(2,3)
 SUM/SEP SUM
 Toggle OFF
 TNR
 Antenna ExEy
 Mode A-32
 Sweep ABCDE