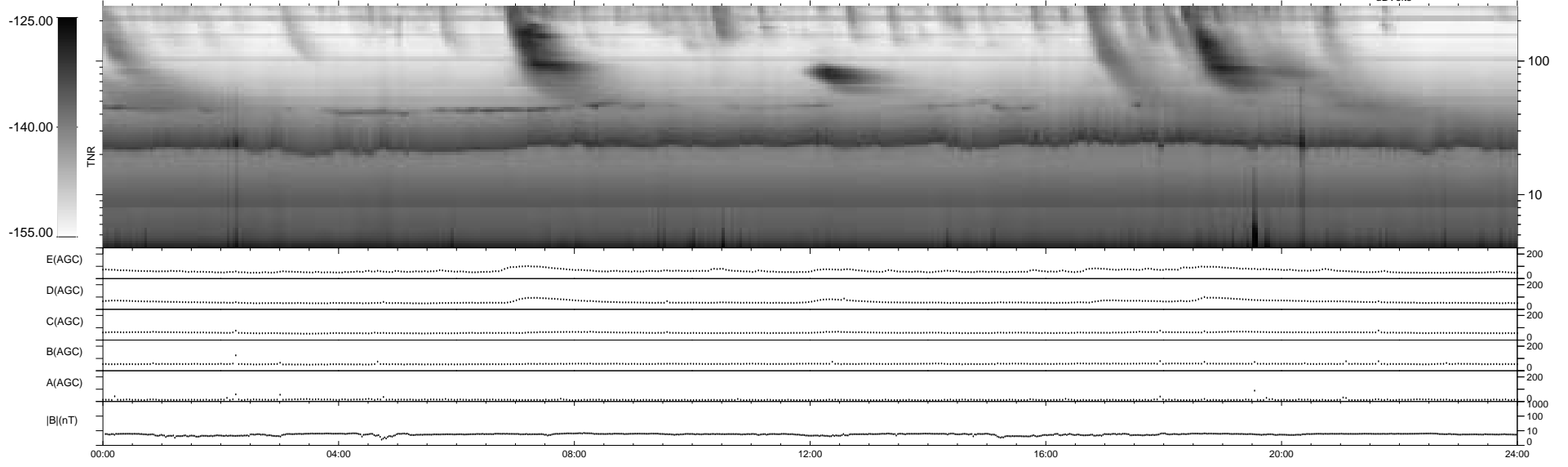
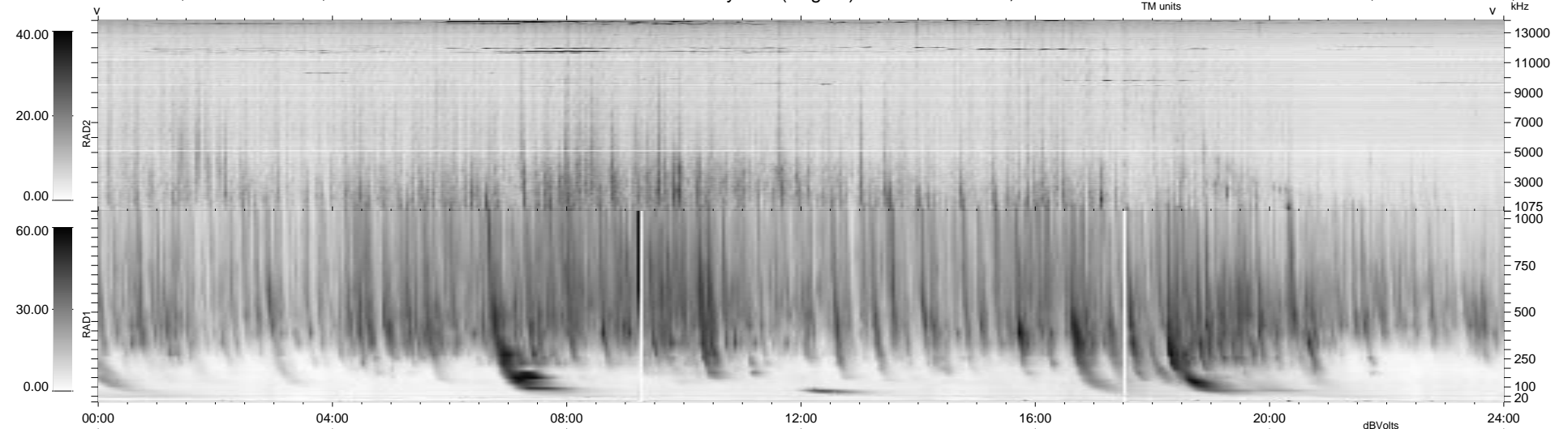


29 bad + 910 good MF/939MF projected (96%) - 0 missing MFs
 Avg interval = 180 secs
 Re = 176.33 (172.62, -24.01, 26.80 GSE)

1.7d VMS-SunOS LZ version = v01
 DAILY Tue Sep 23, 2008
 Re = 178.64 (175.18, -22.09, 27.16 GSE)

WIND/WAVES Summary Plot (Page 1) for 19-NOV-1997, DOY = 323



RAD2
 Antenna Ey
 Mode LIN(1)
 SUM/SEP SUM
 Toggle OFF
 RAD1
 Antenna Ex
 Mode LIS(2,3)
 SUM/SEP SUM
 Toggle OFF
 TNR
 Antenna ExEy
 Mode A-32
 Sweep ABCDE