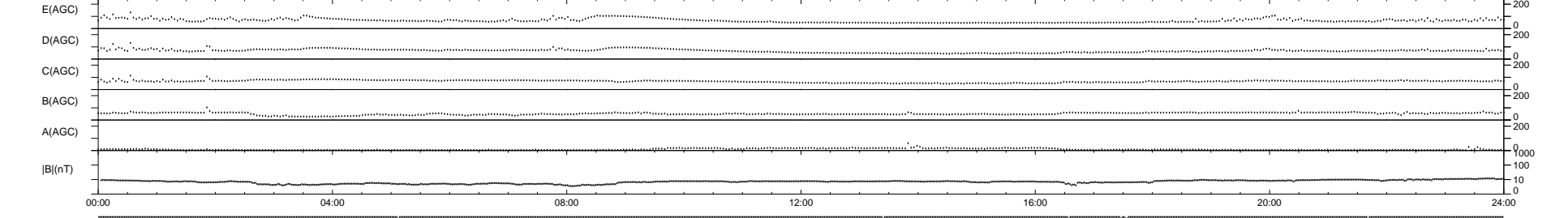
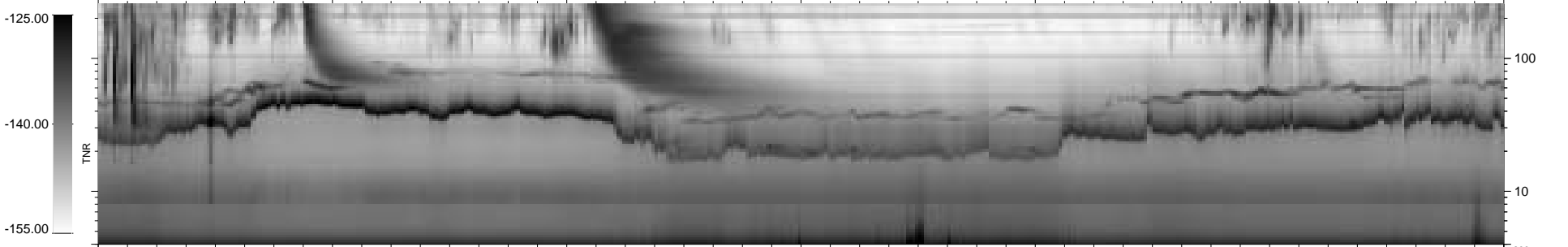
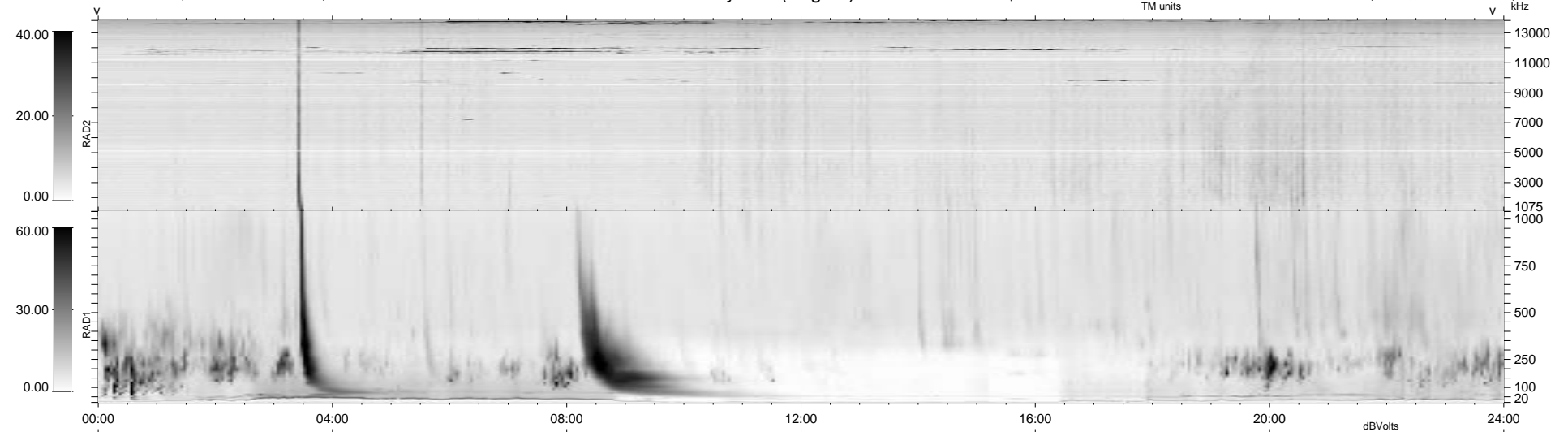


7 bad + 932 good MF/939MF projected (99%) - 0 missing MFs  
 Avg interval = 180 secs  
 Re = - 171.40 (167.11, -27.94, 25.87 GSE)

1.7d VMS-SunOS LZ version = v01  
 DAILY Tue Sep 23, 2008  
 Re = 173.89 (169.91, -25.98, 26.36 GSE)

WIND/WAVES Summary Plot (Page 1) for 17-NOV-1997, DOY = 321



RAD2  
 Antenna Ey .....  
 Mode LIN(1) .....  
 SUM/SEP SUM .....  
 Toggle OFF .....  
 RAD1  
 Antenna Ex .....  
 Mode LIS(2,3) .....  
 SUM/SEP SUM .....  
 Toggle OFF .....  
 TNR  
 Antenna ExEy .....  
 Mode A-32 .....  
 Sweep ABCDE .....