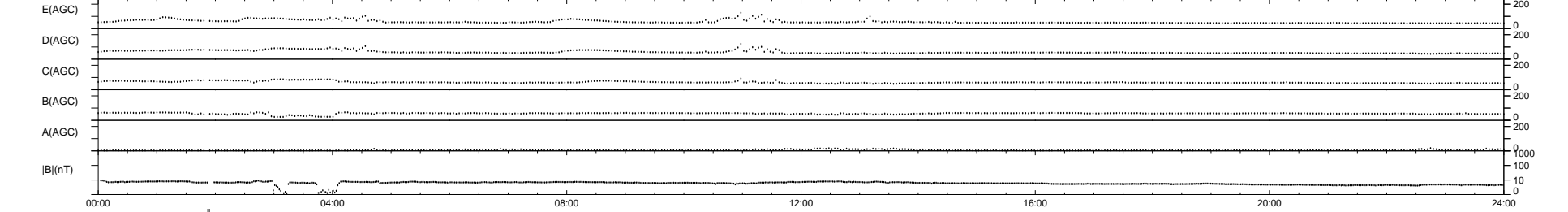
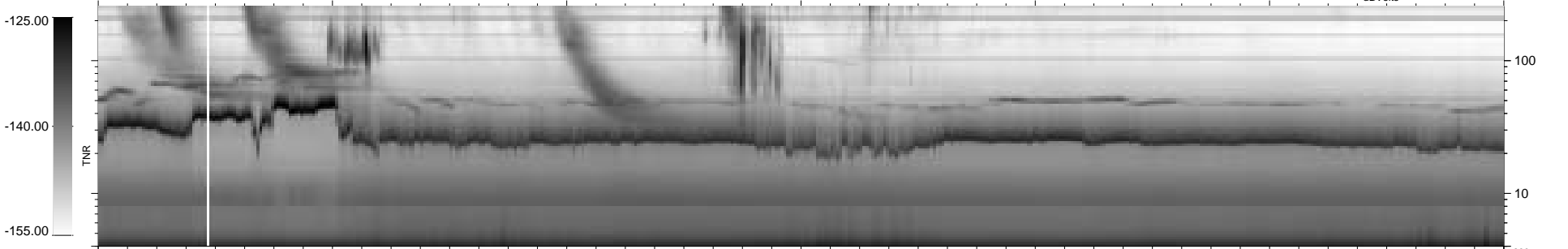
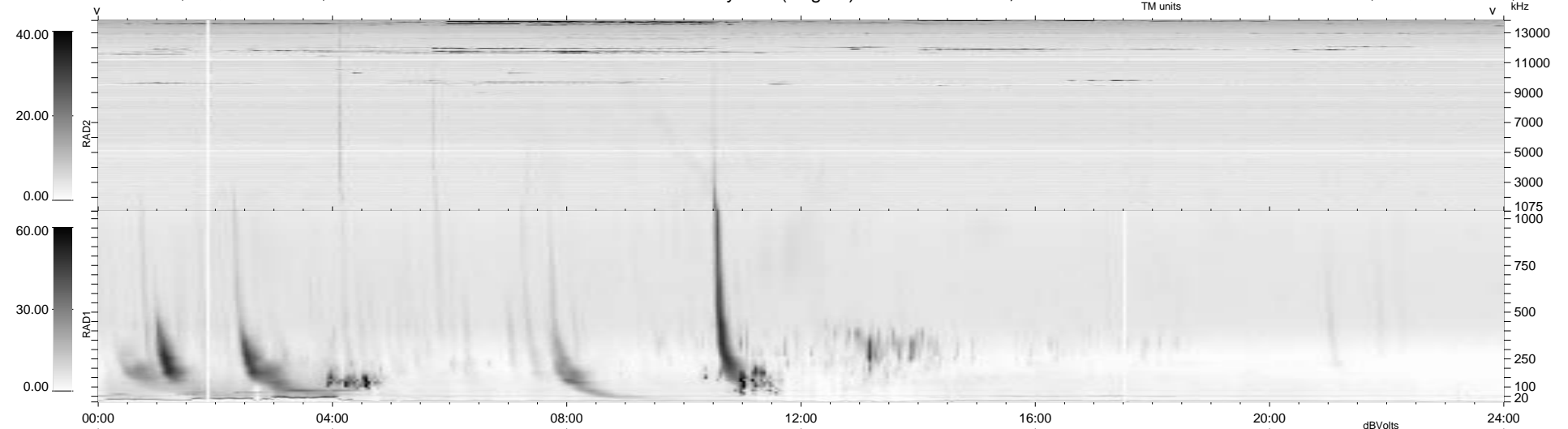


15 bad + 922 good MF/939MF projected (98%) - 2 missing MFs  
 Avg interval = 180 secs  
 Re = 154.14 (147.21, -40.29, 21.51 GSE)

1.7d VMS-SunOS LZ version = v01  
 DAILY Tue Sep 23, 2008  
 Re = 157.29 (150.94, -38.16, 22.41 GSE)

WIND/WAVES Summary Plot (Page 1) for 11-NOV-1997, DOY = 315



RAD2  
 Antenna Ey  
 Mode LIN(1)  
 SUM/SEP SUM  
 Toggle OFF

RAD1  
 Antenna Ex  
 Mode LIS(2,3)  
 SUM/SEP SUM  
 Toggle OFF

TNR  
 Antenna ExEy  
 Mode A-32  
 Sweep ABCDE