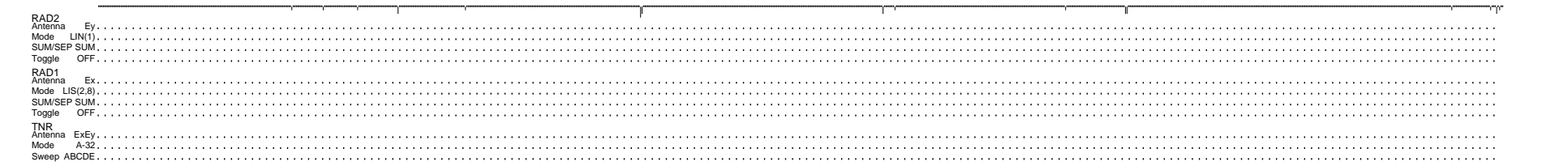
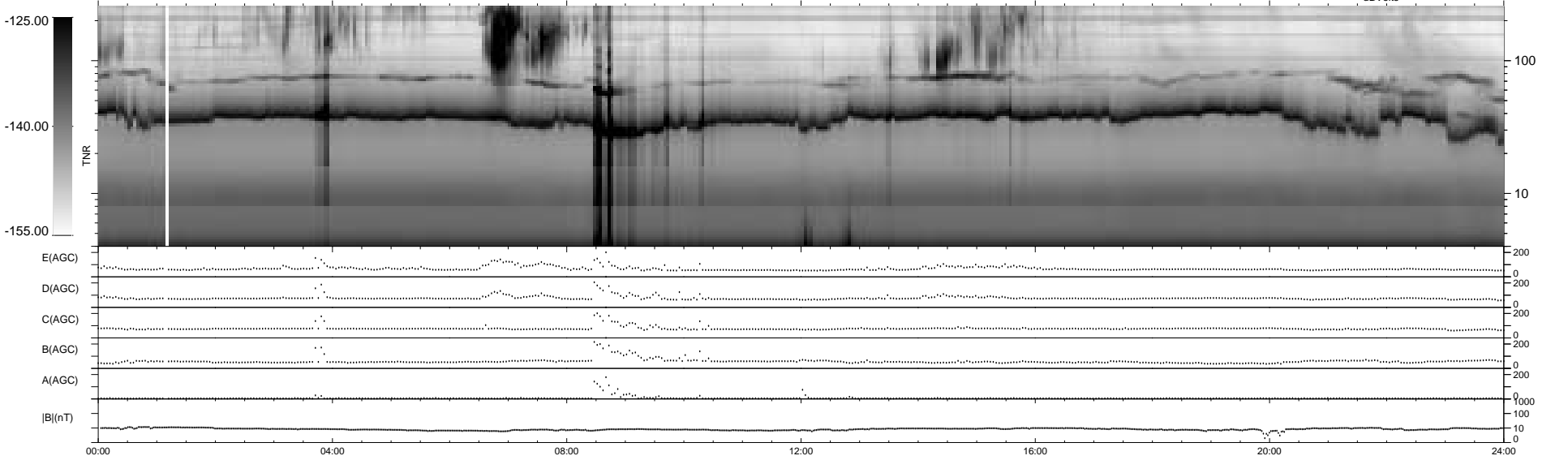
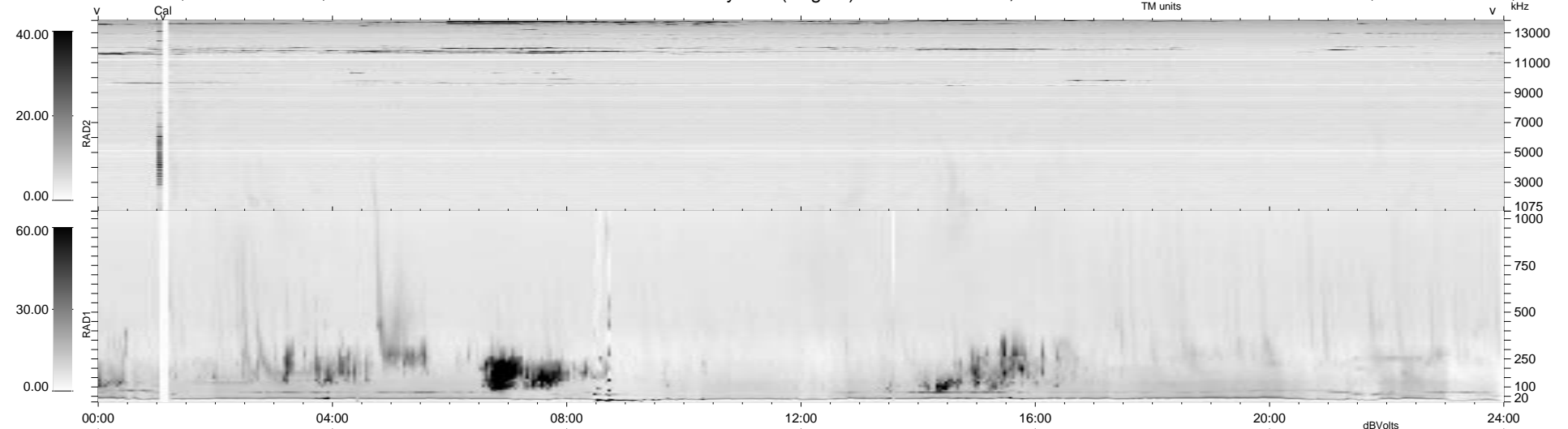


16 bad + 923 good MF/939MF projected (98%) - 0 missing MFs
 Avg interval = 180 secs
 Re = 150.81 (143.24, -42.48, 20.54 GSE)

1.7d VMS-SunOS LZ version = v01
 DAILY Tue Sep 23, 2008
 Re = 154.12 (147.19, -40.31, 21.51 GSE)

WIND/WAVES Summary Plot (Page 1) for 10-NOV-1997, DOY = 314



RAD2
 Antenna Ey
 Mode LIN(1)
 SUM/SEP SUM
 Toggle OFF

RAD1
 Antenna Ex
 Mode LIS(2,3)
 SUM/SEP SUM
 Toggle OFF

TNR
 Antenna ExEy
 Mode A-32
 Sweep ABCDE