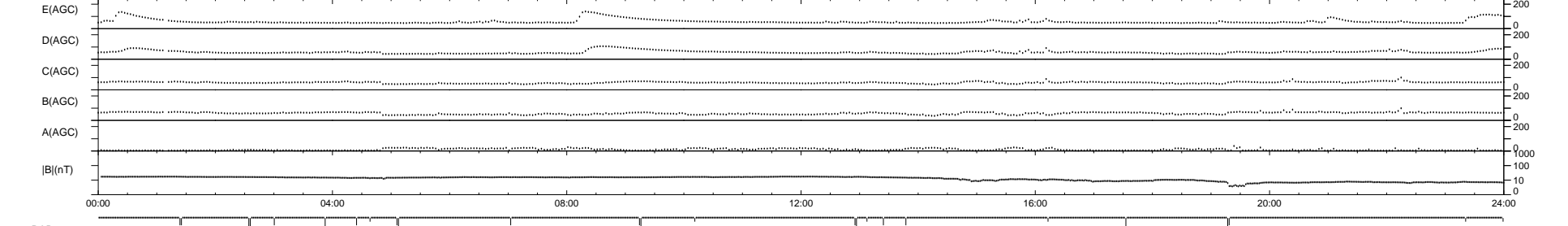
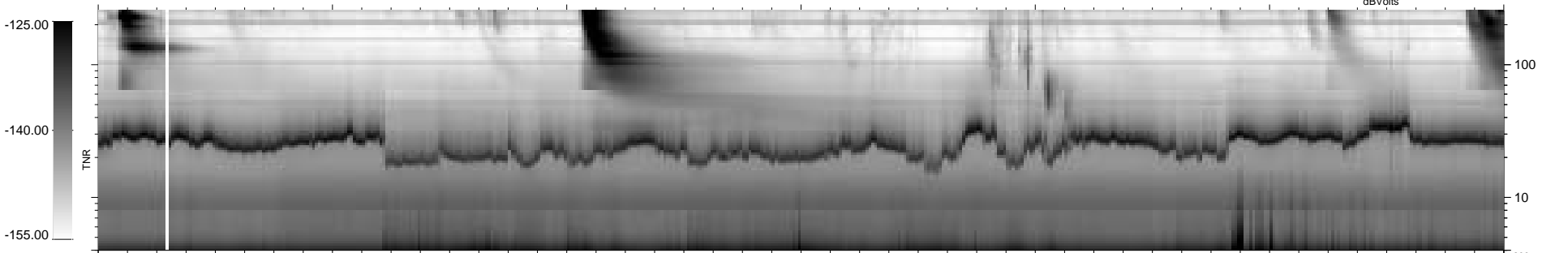
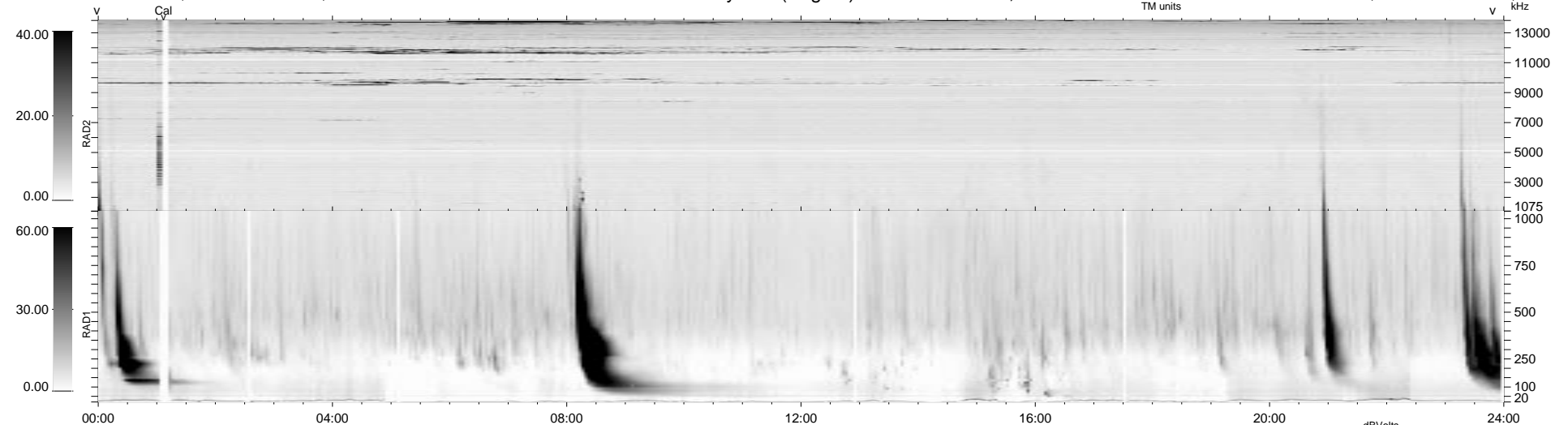


25 bad + 914 good MF/939MF projected (97%) - 0 missing MFs
 Avg interval = 180 secs
 Re = 143.64 (134.50, -46.96, 18.37 GSE)

1.7d VMS-SunOS LZ version = v01
 DAILY Tue Sep 23, 2008
 Re = 147.29 (138.98, -44.72, 19.49 GSE)

WIND/WAVES Summary Plot (Page 1) for 08-NOV-1997, DOY = 312



```

RAD2
Antenna Ey
Mode LIN(1)
SUM/SEP SUM
Toggle OFF

RAD1
Antenna Ex
Mode LIS(2,3)
SUM/SEP SUM
Toggle OFF

TNR
Antenna ExEy
Mode A-32
Sweep ABCDE
  
```