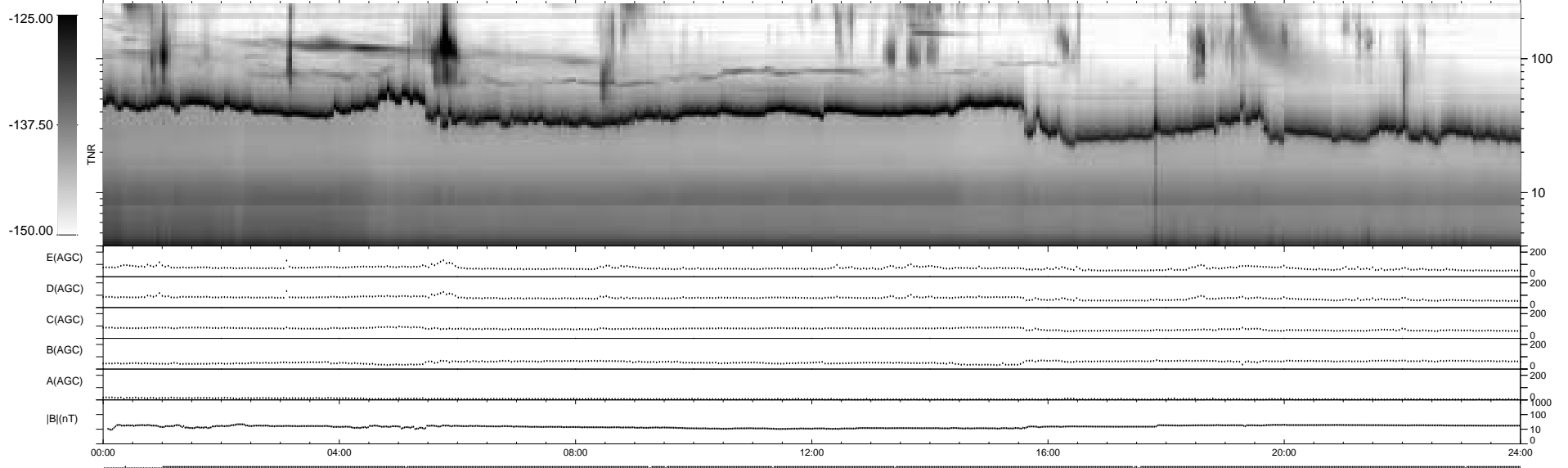
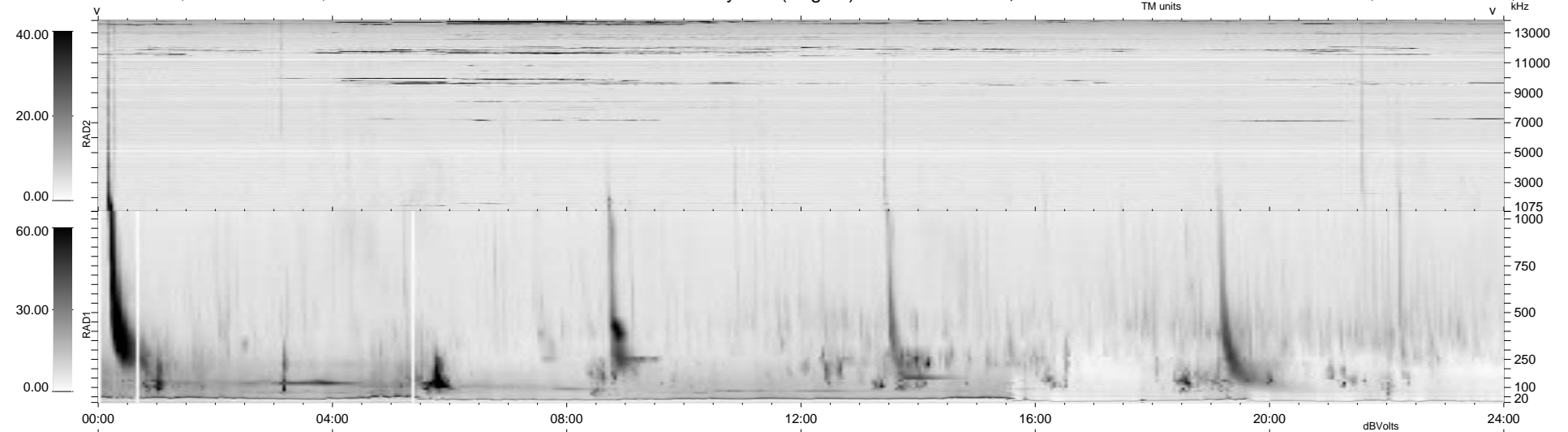


48 bad + 891 good MF/939MF projected (94%) - 0 missing MFs
 Avg interval = 180 secs
 Re = 139.76 (129.67, -49.24, 17.16 GSE)

1.7d VMS-SunOS LZ version = v01
 DAILY Tue Sep 23, 2008
 Re = 143.62 (134.47, -46.98, 18.36 GSE)

WIND/WAVES Summary Plot (Page 1) for 07-NOV-1997, DOY = 311



RAD2
 Antenna Ey
 Mode LIN(1)
 SUM/SEP SUM
 Toggle OFF
 RAD1
 Antenna
 Mode
 SUM/SEP
 Toggle
 TNR
 Antenna ExEy
 Mode A-32
 Sweep ABCDE