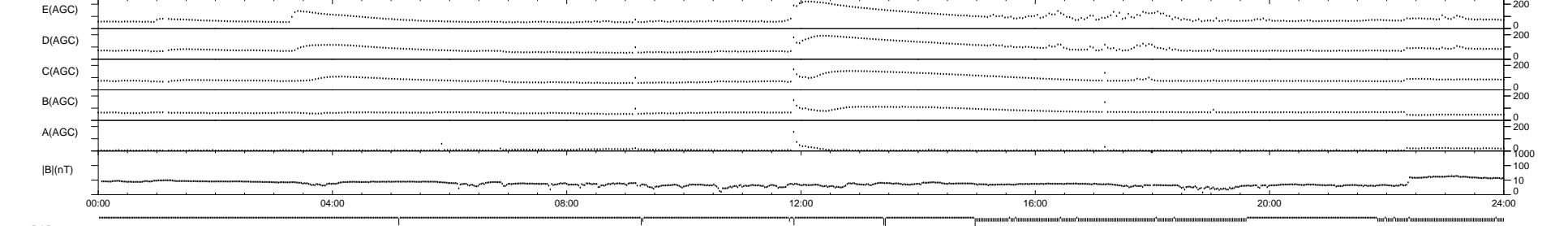
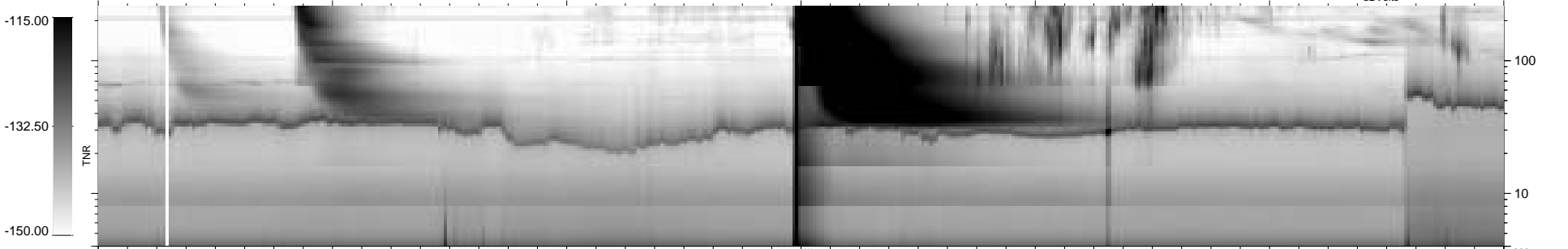
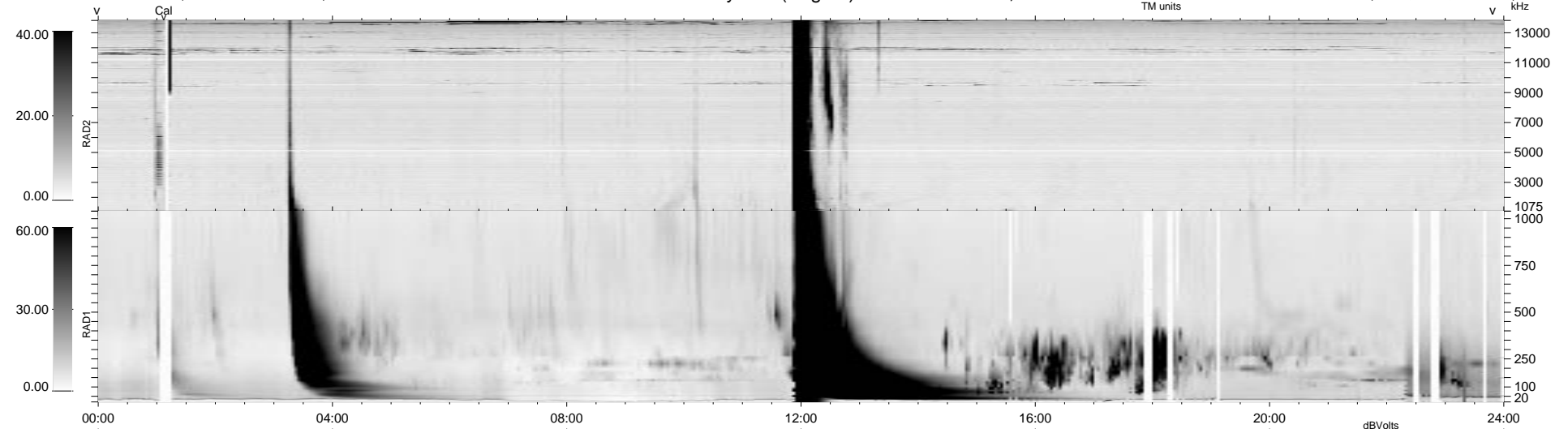


264 bad + 675 good MF/939MF projected (71%) - 0 missing MFs
 Avg interval = 180 secs
 Re = -135.65 (124.47, -51.52, 15.88 GSE)

1.7d VMS-SunOS LZ version = v01
 DAILY Tue Sep 23, 2008
 Re = 139.73 (129.63, -49.26, 17.15 GSE)

WIND/WAVES Summary Plot (Page 1) for 06-NOV-1997, DOY = 310



RAD2
 Antenna Ey
 Mode LIN(1)
 SUM/SEP SUM
 Toggle OFF
 RAD1
 Antenna Ex
 Mode LIS(2,3)
 SUM/SEP SUM
 Toggle OFF
 TNR
 Antenna ExEy
 Mode A-32
 Sweep ABCDE