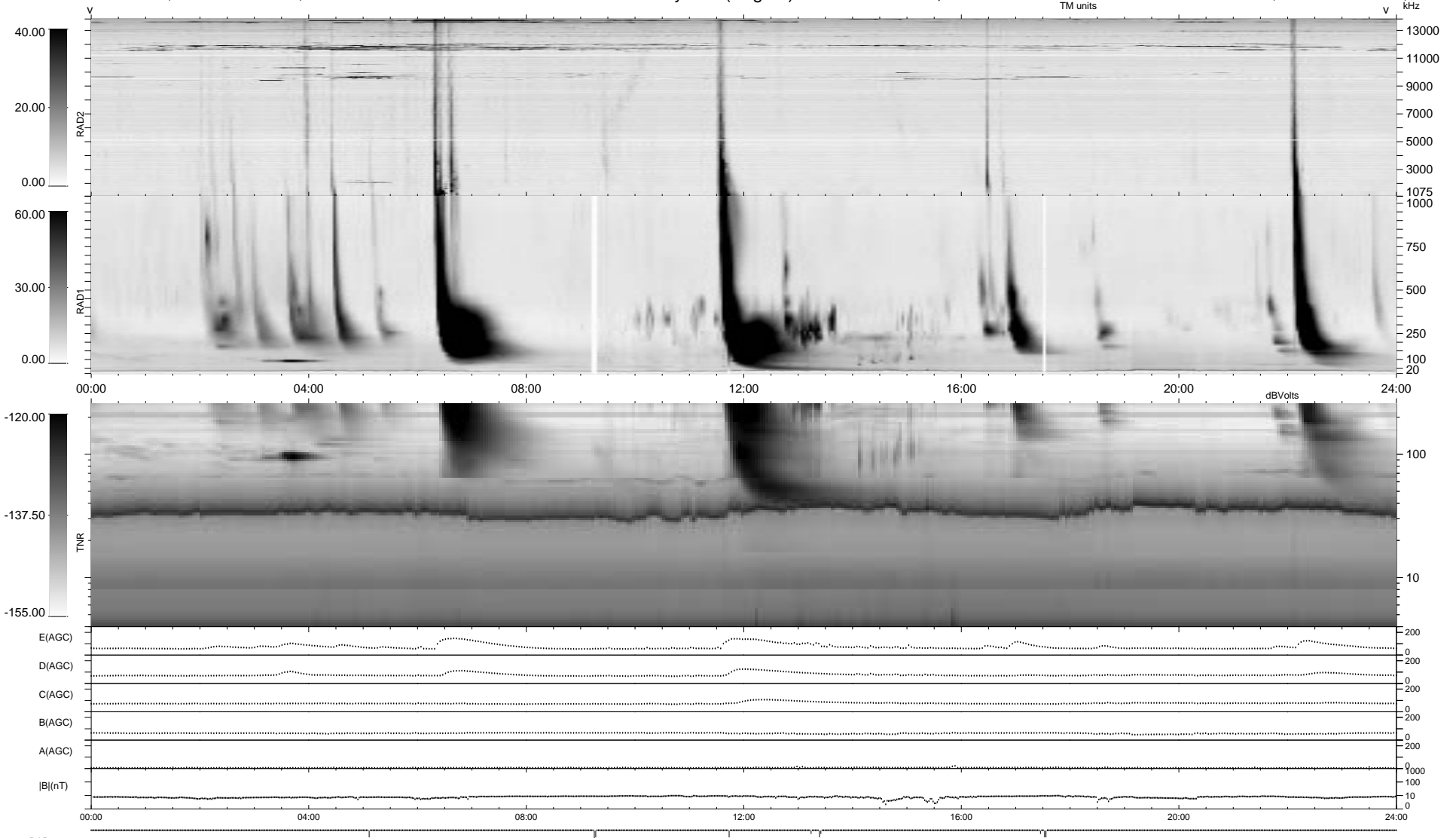


10 bad + 930 good MF/940MF projected (98%) - 0 missing MFs
 Avg interval = 180 secs
 Re = 131.29 (118.88, -53.79, 14.51 GSE)

1.7d VMS-SunOS LZ version = v01
 DAILY Tue Sep 23, 2008
 Re = 135.62 (124.44, -51.54, 15.87 GSE)

WIND/WAVES Summary Plot (Page 1) for 05-NOV-1997, DOY = 309



RAD2
 Antenna Ey
 Mode LIN(1)
 SUM/SEP SUM
 Toggle OFF

RAD1
 Antenna Ex
 Mode LIS(2,3)
 SUM/SEP SUM
 Toggle OFF

TNR
 Antenna ExEy
 Mode A-32
 Sweep ABCDE