

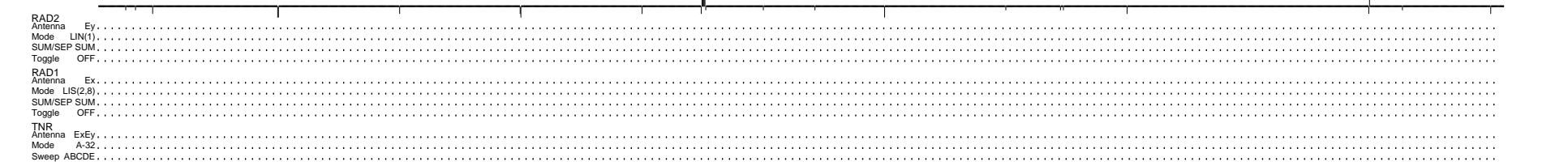
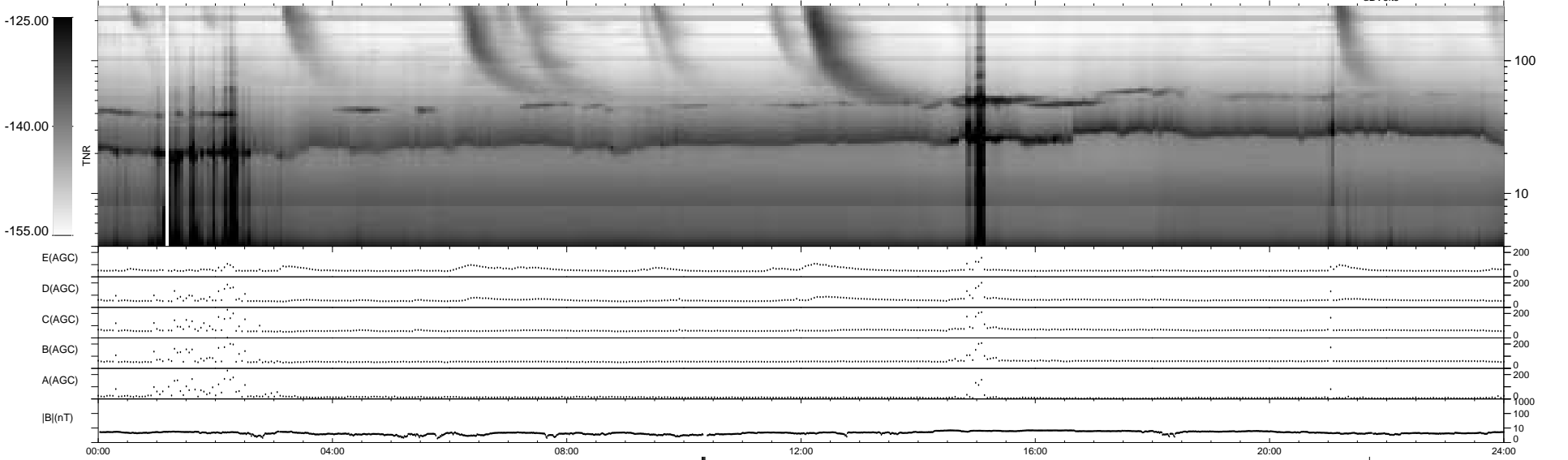
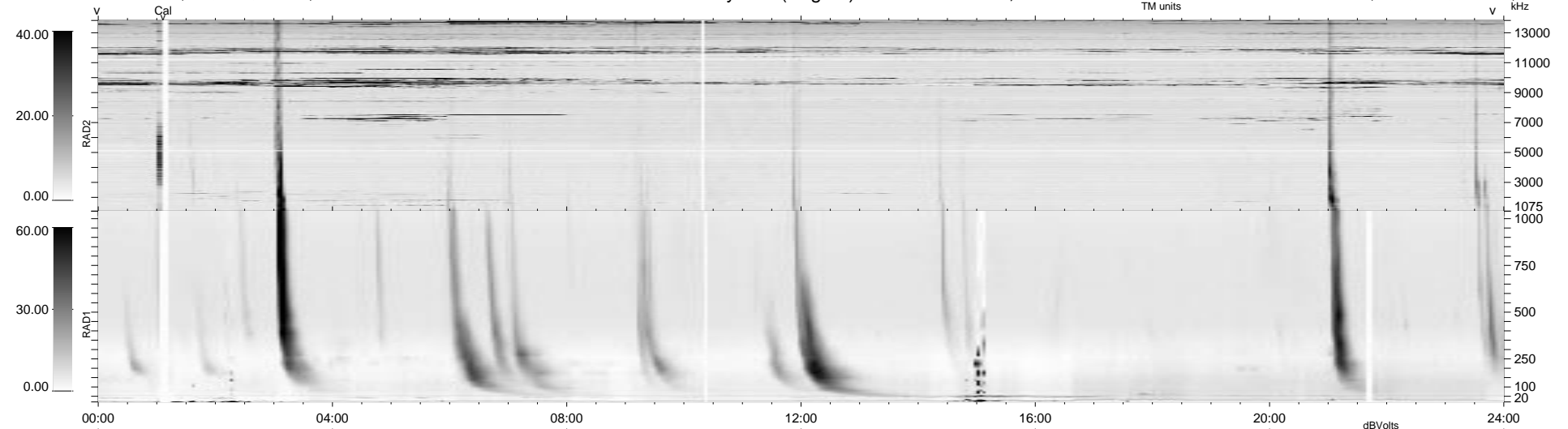
21 bad + 1851 good MF/1878MF projected (98%) - 6 missing MFs
 Avg interval = 180 secs
 Re = 116.49 (99.26, -60.17, 9.92 GSE)

1.7d VMS-SunOS

LZ version = v01

WIND/WAVES Summary Plot (Page 1) for 02-NOV-1997, DOY = 306

DAILY Tue Sep 23, 2008
 Re = 121.70 (106.28, -58.17, 11.52 GSE)



```

RAD2
Antenna Ey .....
Mode LIN(1) .....
SUM/SEP SUM .....
Toggle OFF .....

RAD1
Antenna Ex .....
Mode LIS(2,3) .....
SUM/SEP SUM .....
Toggle OFF .....

TNR
Antenna ExEy .....
Mode A-32 .....
Sweep ABCDE .....
  
```