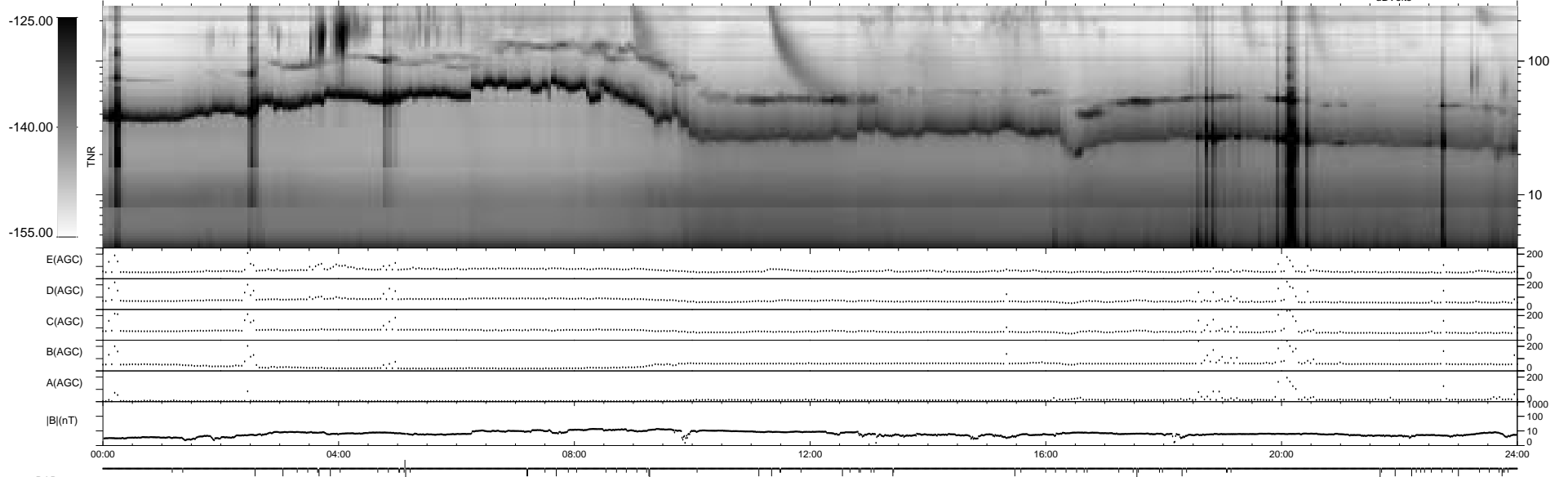
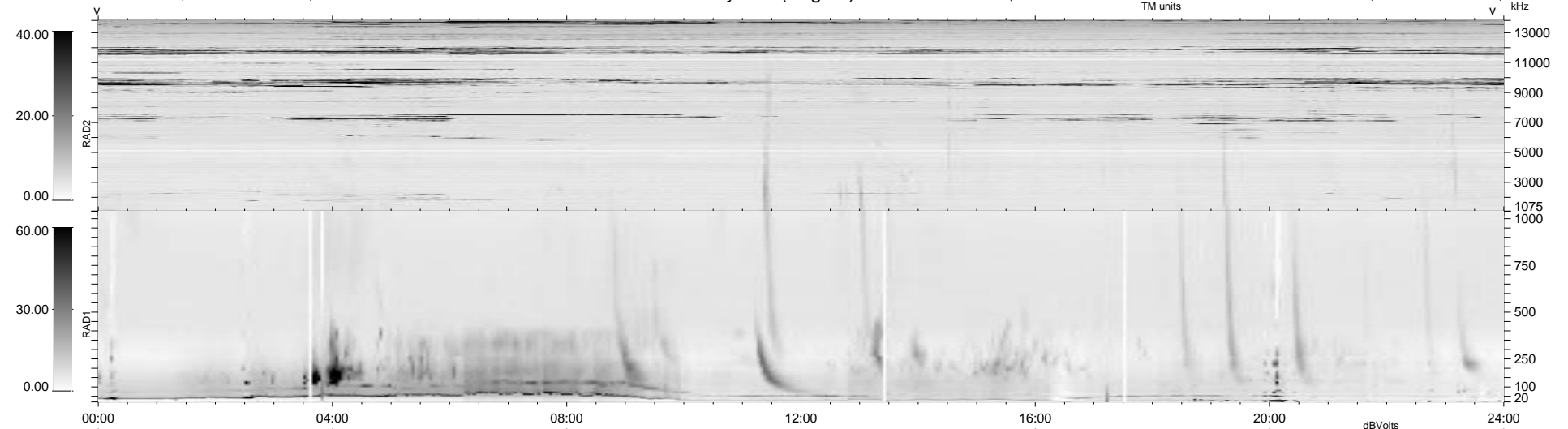


82 bad + 1796 good MF/1879MF projected (95%) - 1 missing MF
 Avg interval = 180 secs
 Re = 110.90 (91.58, -62.00, 8.23 GSE)

1.7d VMS-SunOS LZ version = v01
 DAILY Tue Sep 23, 2008
 Re = 116.45 (99.20, -60.18, 9.91 GSE)

WIND/WAVES Summary Plot (Page 1) for 01-NOV-1997, DOY = 305



RAD2
 Antenna Ey
 Mode LIN(1)
 SUM/SEP SUM
 Toggle OFF

RAD1
 Antenna Ex
 Mode LIS(2,3)
 SUM/SEP SUM
 Toggle OFF

TNR
 Antenna ExEy
 Mode A-32
 Sweep ABCDE